



HAWAII COMMUNITY
FOUNDATION

Moving Our
COMMUNITY
FORWARD





OUR MISSION

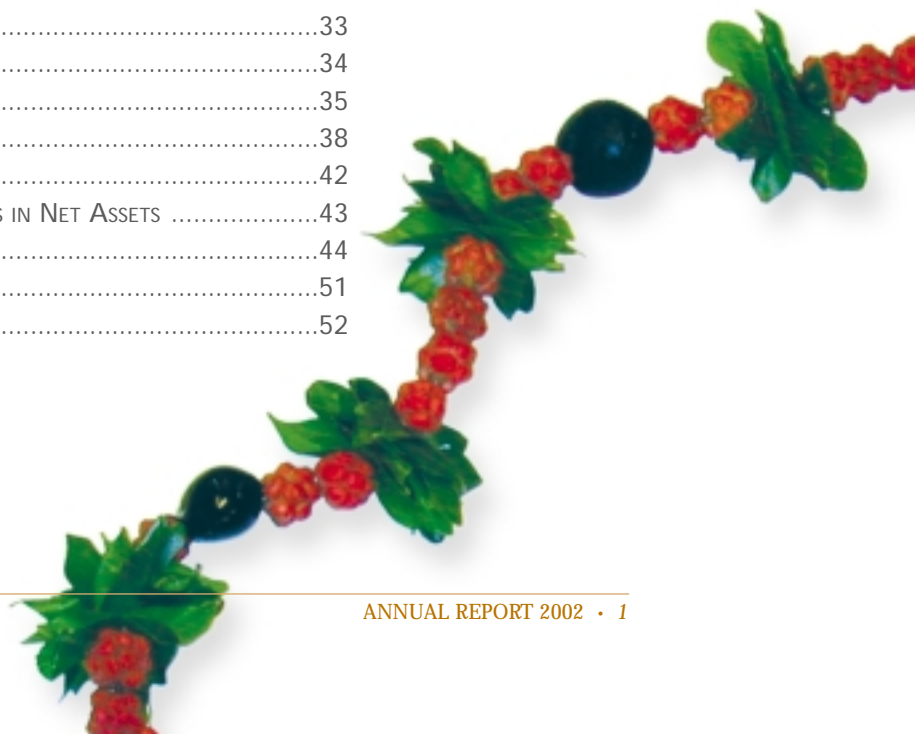
*Hawai'i Community Foundation
helps people make a difference by
inspiring the spirit of giving
and by investing in people
and solutions to benefit
every island community.*



HAWAII COMMUNITY
FOUNDATION

TABLE OF CONTENTS

A MESSAGE TO OUR FRIENDS	3
2002 BOARD OF GOVERNORS.....	8
NEIGHBOR ISLAND LEADERSHIP COUNCILS	10
THE ART OF GIVING	13
GIVING FROM THE HEART	15
A GIFT FROM A STRANGER	17
GIVING FOR OUR FUTURE	19
SHARING THE GIVING EXPERIENCE	21
MAHALO TO OUR DONORS	22
LEGACY SOCIETY MEMBERS	24
GIVING BACK THROUGH THE HAWAI'I COMMUNITY FOUNDATION.....	25
CHARITABLE FUNDS THAT STRENGTHEN OUR COMMUNITY	26
VOLUNTEER ADVISORY MEMBERS	30
SERVICES PROVIDED TO OTHER FOUNDATIONS	32
GRANTMAKING	33
GRANTS SUMMARY 2001	34
DESIGNATED/DONOR ADVISED GRANTS.....	35
DISCRETIONARY GRANTS.....	38
STATEMENT OF ASSETS, LIABILITIES AND NET ASSETS.....	42
STATEMENT OF REVENUES AND EXPENSES AND CHANGES IN NET ASSETS	43
NOTES TO FINANCIAL STATEMENTS	44
CORPORATE TRUSTEES	51
HAWAI'I COMMUNITY FOUNDATION STAFF	52





*“...Amidst the sorrow and anguish,
we realized our blessings...
we had a responsibility to help.”*

A MESSAGE TO OUR FRIENDS

As we reflect on the past year, our thoughts continually return to the horrific events of September 11, 2001. In a moment, our world changed. What seemed at first to be an event so far removed from Hawai'i in time and dimension, we soon learned affected our own community in so many ways—the loss of friends and family members, the downturn of our economy and its cascading impacts and an almost universal pause, as individuals, to review our priorities and values.

Like many others, we felt angry, sad and helpless at first. But amidst the sorrow and anguish, we, at the Hawai'i Community Foundation, realized our blessings and our privileges. We had a responsibility to help.

Working with the local United Ways and financial institutions, the Foundation established the September 11th Fund in Hawai'i as a means for residents to help out. The outpouring of support and cooperation was phenomenal. For the first time, folks could walk into almost any financial institution in Hawai'i to make a contribution. Businesses called with unsolicited donations, schools and teenagers held fundraisers, newspapers and television and radio stations helped spread the word. Nearly \$1 million was collected to support the victims and their families of the terrorist attacks.

In the weeks that followed, we convened more than 20 meetings of nonprofit agencies and community groups statewide to better understand the emerging impacts in Hawai'i. As we identified areas of critical needs and opportunities, we shared this information with policy makers, funders and business and community leaders in an effort to work together in developing responses.

Thanks to generous donors who entrusted their funds to the Foundation, we were able to fashion \$1 million in interim assistance throughout Hawai'i in the areas of emergency health care, immigrant services and tuition assistance for preschool and private school families.

We think of those donors all the time. What would have compelled them to believe in the Hawai'i Community Foundation, to leave a permanent, unrestricted legacy for the future? Surely, they could not have foreseen the events of September 11th or the resulting needs in our community. But they must have understood that the community needed a vehicle like the Foundation to respond to emerging needs and opportunities as they unfold. They placed enormous trust in us, as stewards, to do what was best.

*“No matter what form it takes—
time, talent or financial resources, giving back
improves the quality of life for all of us.”*

The Meaning of Giving

As we witnessed the outpouring of support from the community and remembered the foresight of those donors, we were struck by a common thread. Even in the darkest of times, people want to help. This impulse is rooted in the interminable belief in the future—giving is an act of faith.

At the Foundation, it is our privilege to witness these acts of giving and their outcomes on a daily basis. Every day, people take steps, both big and small, to make our island home a better place. In fact, a lot of giving in Hawai'i is informal—the kinds of daily support of school projects, soccer leagues, and Huli Huli chicken sales. Giving also translates into volunteering time to help out at a favorite nonprofit agency, tutoring a student, or spending the day with the elderly.

No matter what form it takes, however—time, talent or financial resources, giving back improves the quality of life for all of us. At the same time, connecting those in need with those who can give is an important part of what the Hawai'i Community Foundation does.

We connect donors to causes that matter to them. We connect nonprofit agencies with potential partners and mentors, and support training to improve their effectiveness. We raise public awareness around key community issues and trends. We support the efforts of nonprofit leaders to connect with government and the private sector.



*“2001 marked 85 years of
service to the community.”*

2001—A Year To Remember

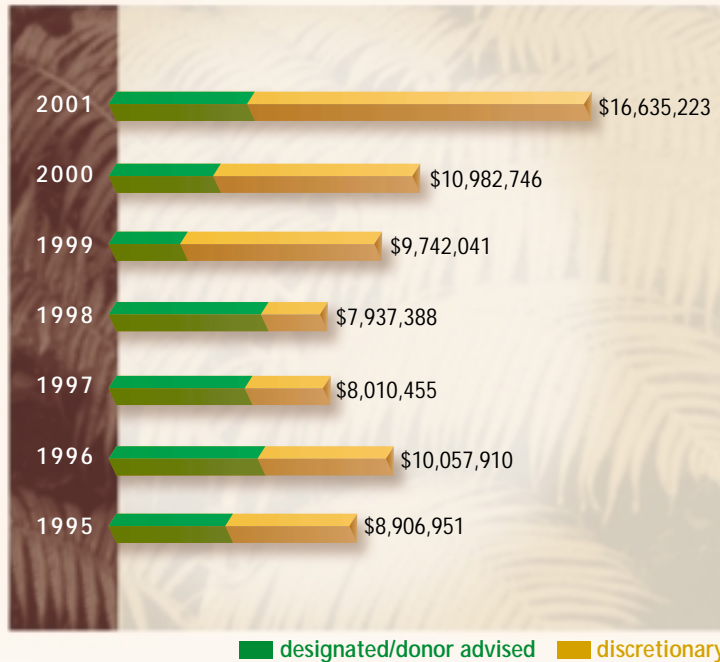
Last year marked 85 years of service to the community. In 2001, we distributed nearly \$28 million in grants: \$16.6 million from HCF funds; \$9.2 million on behalf of our private foundation clients; and \$2.5 million from HCF’s scholarship program, which includes \$598,000 in HCF funds and \$1.9 million in contract funds.

2001 also marked the Foundation’s leap into the world of technology. We redesigned our Web site to include another site, The Hawai’i Center for Giving. The sites helped us to better provide donors, grantmakers, nonprofits, financial advisors and the general public with the latest information about charitable giving and the nonprofit sector.

Other notable undertakings last year included the award of more than \$800,000 in a first round of grants from the Hawai’i Tobacco Prevention and Control Trust Fund and the release of a nonprofit executive tenure study, *Daring to Lead*, which highlighted the challenges of nonprofit management in our state.

As part of our ongoing effort to support nonprofits, we launched the Organizational Capacity Building Program. More than \$275,000 was awarded to agencies in specific program areas to strengthen their organizational infrastructure, internal management and board governance.

Total HCF Grants



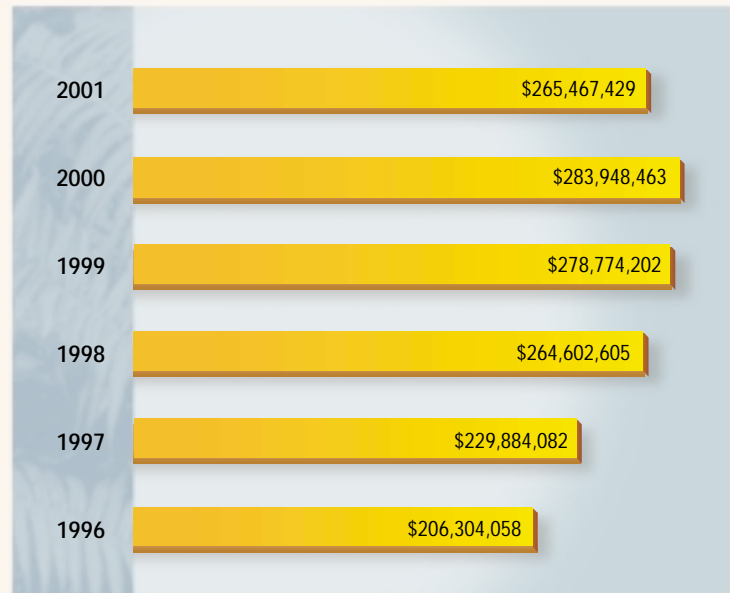
*“We remain committed to our belief
in promoting philanthropy in Hawai‘i.”*

Our Natural Resources Conservation Program received \$4 million from the David and Lucile Packard Foundation and \$1 million from the William and Flora Hewlett Foundation. These grants have increased our grantmaking to support conservation organizations statewide—an area that we will continue to develop in the near-term. We also completed a marine assessment, People and the Sea, which provided details about how to enhance the conservation of marine resources in the main Hawaiian Islands. The report’s findings will help us in the development of the marine portion of our Natural Resources Conservation Program, which will be introduced in 2002.

With charitable assets of \$265 million and 37 new funds, we remained committed to our belief in promoting philanthropy in Hawai‘i. We focused on increasing charitable investments in the community regardless of whether the funds were contributed to us, used to establish a trust fund or private foundation, or given directly to a nonprofit agency. As a result, we were able to facilitate more than \$27 million for charitable causes in Hawai‘i.

Finally, we want to acknowledge the Foundation’s Board of Governors, Corporate Trustees and staff. Their support and dedication throughout this extraordinary year have proven invaluable. *Thank you.*

HCF Charitable Assets



*“We will continue to focus on two areas—
increasing the levels of social capital in our communities
and strengthening the organizational capacity of nonprofit groups.”*

2002—Moving Our Community Forward

The Foundation remains committed to leading the way in promoting philanthropy, providing charitable services to donors and strategic grantmaking to support nonprofit agencies, and serving as an information resource on the nonprofit industry, and community issues and trends.

Besides offering grantmaking programs that are specific to a field, geographic area or population, we will continue to focus on two areas in 2002 that are broader and available to organizations statewide: projects to increase the levels of social capital in our communities and projects to strengthen the organizational capacity of nonprofit groups.

In addition, our Board of Governors and staff will be busy redefining the strategies and desired impacts of our grantmaking programs and determining better ways to leverage more than 300 existing funds through partnerships with grantees, funders and policy makers.

Without a doubt, last year also reminded us of how critical a role community foundations play in ensuring the health and well being of the neighborhoods in which they serve.

Thank you for your contributions to our community and for your continued support of the Hawai'i Community Foundation.



Mahalo,

*Robert A. Alm, Chairman of the Board
Kelvin H. Taketa, President & CEO*

2002 BOARD OF GOVERNORS



Chair:
Robert A. Alm
*Senior Vice President,
Public Affairs*
Hawaiian Electric Co., Inc.



Treasurer:
Webb F. Martin
Retired, Senior Vice President
Bank of Hawai'i



Jean Cornuelle
Community Volunteer



Vice Chair:
Sylvia Yuen
Director
UH Center on the Family



Claire L. Asam
Executive Director
Queen Lili'uokalani
Children's Center



Gary L. Gifford
President & CEO
Maui Land &
Pineapple Co., Inc.



Vice Chair:
Paul Kosasa
President & CEO
MNS, Ltd.



Eugene Bal, III
Director
Maui High Performance
Computing Center



Anthony Guerrero, Jr.
Executive Vice President
First Hawaiian Bank



Secretary:
Robert R. Bean
President & CEO
Alert Holdings
Group, Inc.



Samuel Cooke
*Retired, Senior Vice
President*
Morgan Stanley Dean
Witter



Lawrence M. Johnson
*Past Chairman of
the Board & CEO*
Pacific Century Financial
Corp./Bank of Hawai'i



Charlie King
President
King Auto Center



Myles S. Shibata
COO
Kawailoa Development



Violet Loo
Community Volunteer



Jenai Wall
Chairman & CEO
Foodland Super
Market, Ltd.

Mahalo to Retired Board Members:

Gerry J. Keir
Margaret K. Masunaga
Sada Okumura, M.D.
Jan C. Rudinoff
Ronald C. "Buzz" Wo



Bill D. Mills
Chairman
Bill Mills Development
& Investment Co., Inc.



Jeffrey N. Watanabe
CEO
Watanabe, Ing &
Kawashima



Jennifer Sabas
*Chief of Staff -
Hawai'i Operations*
The Office of U.S. Senator
Daniel K. Inouye



Thomas P. Whittemore
Trustee
Parker Ranch
Foundation Trust

NEIGHBOR ISLAND LEADERSHIP COUNCILS

Kaua'i

Myles S. Shibata, Chair
COO, Kawailoa Development

Nancy Goodale
Community Volunteer

Charlie King
President, King Auto Center

Jan C. Rudinoff
Reverend, St. Michael & All Angels' Episcopal Church

Glen H. Takenouchi
Kaua'i Branch Manager, The Gas Company

Roberta Wallace
Business Manager & Corporate Officer, Gaylord's at Kiloana & Hukilau Lana'i Restaurant

Millie Wellington
Retired, Hawai'i State DOE Teacher; Kaua'i County Public Information Officer

Maui

Gary L. Gifford, Chair
President & CEO, Maui Land & Pineapple Co., Inc.

Eugene Bal, III
Director, Maui High Performance Computing Center

John C. Baldwin
President, H.S.T., Inc.

Sam Kadotani
Retired, Manager, Kaiser Clinic Lahaina

B. Martin Luna
Managing Partner, Carlsmith Ball

Howard Nakamura
President, Wailea Resort Company

Lois Reiswig
Retired, Marketing/Development Manager, International Business Machines

Leona Rocha Wilson
Retired, Owner, President Fashionetics, Inc.

William C.N. Wong
Retired, CPA, Price, Waterhouse, Coopers

Hawai'i

Thomas P. Whittemore, Chair
Trustee, Parker Ranch Foundation Trust

Sam Ainslie
President & CEO, Kukio Community Fund

Scott Craven
Director of Development, Hawai'i Preparatory Academy

Richard Henderson
President, The Realty Investment Company, Ltd.

Margaret K. Masunaga
Deputy Corporation Counsel, County of Hawai'i

Dwayne Miyashiro
Area Manager, Hawai'i Island, Verizon Hawai'i

Barry Taniguchi
President, KTA Super Stores

Margaret S. Ushijima
Attorney, Ushijima and Ushijima

OUR VISION

*We want to live in a Hawai'i
where people care about each other,
our natural resources and
diverse island cultures...
a place where people's ideas, initiative
and generosity support thriving,
responsible communities.*





Giving the gift of knowledge
is an investment in our future.

HCF's Scholarship Program comprises
95 funds established by individuals and
organizations to help students achieve
their educational goals and inspire
the pursuit of lifelong learning.

THE ART OF GIVING

Legendary for their local craft fairs, members of the Pacific Handcrafters Guild are also making a name for themselves as philanthropists. By awarding scholarships through their PHG Foundation, members are promoting fine arts awareness through education and community service.

"We see our scholarship fund as a way to encourage more young people to get involved in fine arts," said Lauren Levin, PHG Foundation advisory board member. "We want people to know that professional artists can make a living doing what they love to do."

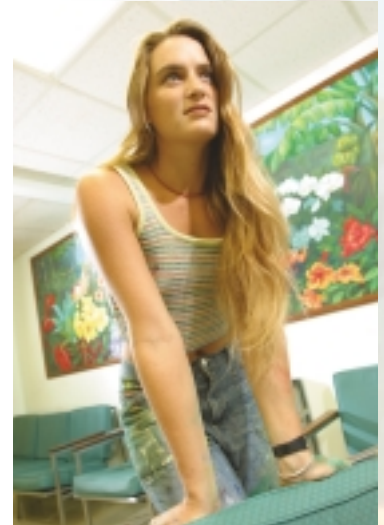
The PHG Foundation was one of several HCF scholarship funds that supported a motivated young student in her dream of becoming a professional artist. PHG recognized not only her talent, but also her spirit of community service.

When the Lanakila Health Center in Kalihi called the art department at the University of Hawai'i looking for a student to paint a large mural, no one had the time to volunteer. No one, that is, except for one busy art student, Lanakila Kelliher, who was working her way through college with the help of HCF scholarships and earning money for supplies by designing logos and painting surfboards.

Before deciding whether she could take on yet another commitment in her junior year, Lanakila called her mother, on Maui, who encouraged her daughter by saying, "something good always comes out of volunteer work." Besides, she pointed out, the center shared with her daughter the name Lanakila, meaning "victory" in Hawaiian.

With the help of two fellow art students, Rikki Ngai and Andy Wong, and a number of all-nighters, Lanakila executed a boldly colored four-by-twelve-foot mural for the patients' reception area. Sadly, Lanakila's mother never got to see that mural; she died unexpectedly a week before her daughter's 21st birthday, moving Lanakila to dedicate the nearly finished project to her mom and to seek, in her art, a way of working through her grief.

It was her mother who originally suggested that Lanakila paint "a bunch of flowers" as her subject. That she did, in vivid hues of red and yellow against the verdant Ko'olau, infusing the windowless waiting area with a vista that is both familiar and far reaching. The mural, which started as a gift to the community from Lanakila, turned out to be a gift for her, as well.



Lanakila Kelliher



Giving your time to a favorite cause
can be just as valuable as a gift of dollars.
About 47,000 volunteers support
local nonprofit agencies.



Karen White

GIVING FROM THE HEART

Phone the residence of Karen White and, chances are, you won't find her at home; this busy 80-year-old is often out working as a volunteer around town. Nonetheless, you'll get a friendly recording on the answering machine—"we are very interested in whatever message you have for us"—that is so in keeping with the White family's open-minded attitude and positive approach to life.

Karen White is many things—social worker, volunteer, philanthropist, advocate, world traveler, and matriarch to a close and highly accomplished family. Hers is a life lived through community service and a legacy for her four grown children, thirteen grandchildren, and two great-grandchildren.

Karen has personally committed herself to the work of Habilitat, Junior League, Family Peace Center, Children's Justice Center, and Family Court, among others. She devotes at least one day every week—and has done so for the last 15 years—helping the scholarship staff at the Hawai'i Community Foundation sift through thousands of pieces of mail.

Behind every piece of mail she files, beyond every board meeting she attends and every message she returns, Karen keeps her vision focused on how she can help one person at a time to overcome obstacles and reach that individual's potential. During the years when her four children were growing up, the Whites made room in their home for 14 unwed mothers awaiting the birth of their babies. Once her own children were older, Karen pursued her early dream of becoming a social worker.

Armed with an MSW degree from the University of Hawai'i, Karen chose to work at Family Court with the kids who were most difficult—those who had serious drug problems or were committed to the youth correctional facility. As probation officer for 20 years, she believed in these youngsters when no one else did—and many have never forgotten her as a result.

Still tirelessly advocating for young people who may have set off on the wrong track, Karen, together with her husband, Robert, established a new fund through HCF—Ho'omaka Hou, which means "a new beginning"—to help young Hawaiians start over by pursuing their education. Karen also serves as a trustee of HCF's Theresa Hughes Trust.

Her passion for volunteering is matched by a strong sense of humility, leading Karen White to describe her six-decade commitment to community service as "no big deal." The many beneficiaries of her efforts would have to disagree with her on that.



Giving back
through a donor advised fund
offers an easy and flexible way to
give to charities that matter to
you and your family.

A GIFT FROM A STRANGER

Donor advised funds offer an easy and flexible way to give to charities that matter to you and your family. A fund can bear the name of a donor, honor or memorialize another person, or remain anonymous.

Recently, a part-time Hawai'i resident who was impressed with the staff and mission of a nonprofit organization on Kaua'i made a generous gift anonymously through a donor advised fund. This gift helped to change a life.

Every weekday morning at 7:30, Laura walks into Pono Cleaners on the main street of Kapa'a, Kaua'i, and heads for the back room where she uses a computer to tag items of clothing.

Laura gained her job skills in a training program at Friendship House. What her boss at Pono's sees and values most in Laura is "a hardworking person who always wears a smile"—choosing to identify Laura by her abilities in performing valuable work everyday rather than by her disability of schizophrenia.

Choosing to see individuals' strengths and talents before their mental illness is the foundation of Friendship House and the passion of its program director Jack Yatsko. Friendship House helps people with chronic mental illness, like Laura, successfully reintegrate into the community by giving its members two simple things: respect and responsibility. That means that the 75 members who come to Friendship House undertake with staff all of the work and decision making required to operate the facility: from budgeting and shopping for the week's menus, to running the thrift shop, greeting visitors and answering phones, and composing the daily newsletter.

The egalitarian atmosphere of Friendship House means that there are no "staff-only" areas in the clubhouse. The participation of members is hardly peripheral; in fact, three of them are responsible for signing all the checks for the organization's nonprofit arm, Friendship Club. Bearing witness to the impact of personal empowerment are statistics like these:

46 percent of Friendship House members are employed (the national average is 15 percent), and 75 percent now reside in integrated settings either with family, in semi-independent group homes, or in their own apartments.

Behind each of the statistics is a story of courage and hope. The courage comes from people like Laura, who, at 51 and on disability benefits, summoned the conviction to learn computer skills and get a job, so that she could help take care of her mother in their home. The hope comes from people like those behind HCF's donor advised funds, whom Laura may never meet, but whose contributions purchased pre-vocational equipment, including the computer on which Laura began her training. What she now brings home with her each week is a paycheck, full health coverage, and a sense of accomplishment, which is the greatest benefit of all.



Laura and Executive Director Jack Yatsko



Providing for the
welfare of future generations
is a thoughtful and
indispensable gift.

GIVING FOR OUR FUTURE

Who would have thought that acts of terrorism against the United States on September 11, 2001 would impact the life of a five-year-old girl 5,000 miles away on Maui? The ripple effect has been particularly cruel to families on the economic edge—those who lost their jobs, health benefits, safety nets, and the stability that all of them bring.



Kayleena Park

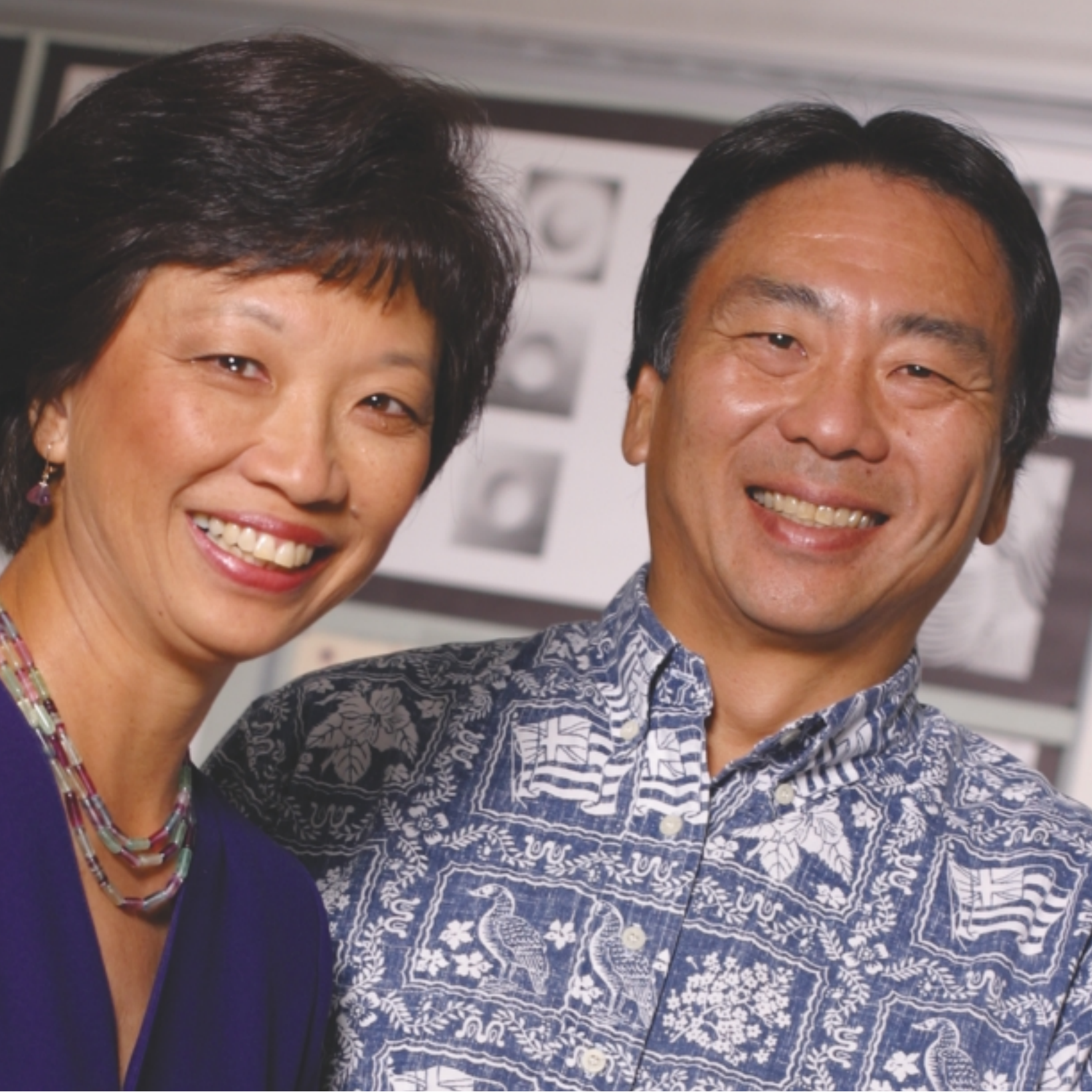
No one could have foreseen the events of September 11, or the breadth of their devastation. But, somehow, there were a few individuals in our state who sensed, five, 10, and even 50 years ago, that there might one day be an urgent need for help in our community. Their decision to generously endow the Community Needs Fund of the Hawai'i Community Foundation, and entrust its staff and board of governors with the distribution of grants, is a legacy now doubly appreciated for its philanthropy and its providence.

At her graduation from 'Iao Preschool in Wailuku, Maui, five-year-old Kayleena Park announced to the assembled audience of relatives and friends that she was planning to be a teacher and a doctor when she grew up. With aspirations like those, this would be the first of many graduations for Kayleena, but it was, nonetheless, a particularly meaningful one for her family.

Within days of September 11, due to the negative impact on Hawai'i's economy, Kayleena's dad was laid off from a construction job he had just returned to after an unpaid medical leave. Soon after, the landlord raised the family's rent, and bills were quickly mounting. With only one paycheck to support a family of four, the Parks were falling further and further behind, and, according to Kayleena's mom Christina, "something had to give." That something, unfortunately, had to be 'Iao Preschool—a place that offered stability and joy to children like Kayleena during a time of heightened stress throughout the world and in their own homes.

When she reluctantly approached the preschool director with the news, Christina learned about the availability of tuition assistance for children from HCF's emergency funding response effort. "The grant made all the difference for our family," claims a grateful Christina. "Kayleena was able to finish the preschool she loves so much and is looking forward to starting kindergarten in the fall."

Thanks to donors of the Community Needs Fund, HCF provided \$1 million in interim assistance to meet the critical community needs. In addition to tuition assistance, grant areas included emergency health care and immigrant services.



Becoming a mentor is
another way to give back
and share your skills and ideas with others.
The Principals' Leadership Academy
is one of many HCF partnerships
with funders and supporters
from the business sector.

SHARING THE GIVING EXPERIENCE

It's been a long time since Keith Nagata, now vice president of sales at Verizon Hawai'i, attended middle school. Well, maybe three weeks. Keith, and 17 other business leaders (including eight from Verizon) are part of this year's Principals' Leadership Academy, an innovative school/business partnership aimed at empowering public school principals to make the changes that they identify as necessary.



Annette Nishikawa and Keith Nagata

Spending time on campus—touring the facilities, attending faculty meetings, visiting classrooms in session, and shadowing a principal through a typical working day—was key to understanding the challenges inherent in a principal's job... and they are numerous. Businesses have long recognized what schools are beginning to understand: that visionary leadership is vital to their success. Empowering public school principals with leadership skills is only part of the equation in an environment that pits new ideas against old rivals: namely, budgets, bureaucracy and status quo.

Helping to bridge the best practices of both worlds is the Collaborative Action for Public Education (CAPE), an initiative of the Hawai'i Business Roundtable. When Art Souza, principal of Waikoloa Elementary School, identified the need for more substitute teachers, he worked through CAPE with Tom Hagen, president of South Kohala Management, to come up with a strategic plan for streamlining the certification process. When Annette Nishikawa, principal of Kapolei Middle School, sought to increase community participation at the school, she worked with Keith Nagata who helped her utilize the school's existing resources, including an excellent technology program.

Businesses and schools are, in fact, a likely partnership, especially when you consider the crucial role that well-educated graduates will play in all of our futures. The collaborative nature of the Principals' Leadership Academy mirrors the team of donors that came together for its formation—Hawai'i Community Foundation; Harold K.L. Castle Foundation; McNerny Foundation; Atherton Family Foundation; Samuel N. & Mary Castle Foundation; Shinnyo-En Foundation; and James & Abigail Campbell Foundation.

Most exciting of all is the change that is being made at a systemic level. Two of the principals who participated in the Leadership Academy have since moved up to leadership positions with the state—bringing with them, in the words of Linda Kamiyama, now an educational specialist, “the richness of experience and training that was shared with me.”

The following made contributions valued at \$250 or more in 2001
to the Hawai'i Community Foundation. We also acknowledge the gifts of
MAHALO TO OUR DONORS those donors who requested to remain anonymous.

Joshua C. Aagsalud
Valerie Ako
Caroline Albano
Alert Alarm of Hawai'i
Robbie & Cynthia Alm
Aloha United Way
Aloha, Home of the Brave
American Savings Bank
Mary Amundson
Dennis C. Anderson
Mary L. Andrews
Avery K. Aoki
Lynnette L. Apo
Apolo Group, Inc.
Jeffrey & Loan Arce
Arizona Community Foundation
Thomas E. Arizumi
Dorothy Astman
Atherton Family Foundation
Gail Atwater
Man K. Au
Amy Awtrye
Margo L. Baist
Bank of Hawai'i
Paige Barber
Barnwell Industries, Inc.
Nancy Bartter
Law Offices of Chris P. Bertelmann
Big Island Aire, Inc.
Sharon S. Bintliff
Mary Bitterman
Laura Bollinger
T.R. Bongartz
Richard Boyd
Andrew Boyles
Abby A. Bragg
Jonathan Bridge
Tahmi Brodhead
Jennifer Bromiley
Sara I. Brown
Christiane Bryan Bintliff
Ellin Burkland
James S. Burns
John A. Burns Foundation
John Burton
Barbara Bush
Agnes E. Cadiz
C. Bryan Caldwell
California Community Foundation
Jeffrey P. Callangan
The Estate of James Campbell
James & Abigail Campbell Foundation
Loraine Carlson
Daniel & Carol Case
Harold K.L. Castle Foundation
Samuel N. & Mary Castle
Foundation

Castle Performing Arts Center
George P. & Ida Tenney Castle Trust
Vicky Cayetano
Margaret Chang
John Chapman
Chevron Products Co.
John Child & Company, Inc.
Anthony Ching
Ethel Ching
Han H. Ching
Phillip & Gerry Ching
Theodora L. Ching
Larry and Beatrice Ching
Foundation
Ching Young Village Shopping Center
Constance Chock
Armand K. Chong
Elroy K. Chong
William G. Christoffel
Marian C. & Walter G. Chuck
Foundation
Joanne L. Chun
Suzanne Chun Oakland
Suzanne S. Churchill
Coffee Partners Hawai'i
Coinstar, Inc.
Consuelo Foundation
Jeanne Cook
Cooke Foundation, Ltd.
William & Carol Coops
Gwendolyn Costello
Costmac, Inc.
Joseph Dacey
Kathryn Daniels
Balarama Dasa
Eleanor Davidorf
Delaff Institute
Dentistry for Children, Inc.
John W. Devereux
Sally Dietz
Olive Doo
Joyce Doty
Jim & Mayfield Drorbaugh
DTP Holdings
Duke's Canoe Club Waikiki
Laura L. Dunworth
A. Jerome Dupont
Lawrence & Trisha Egger
Daniel R. Eineker
EJNL Corporation
Donna Faith Eldredge
Fortunato V. Elizaga
Linda K. Estes
Peggy Eu
Dale S. Evans
Marjory E. Fairbanks
Falko Partners, LLC

Father's of the Sacred Hearts
Daniel A. Ferreira Holt
Filipino Nurses' Organization
of Hawai'i
First Hawaiian Bank
Michael J. Fisch
Barbara Fischowitz-Leong
Muriel M. Flanders
Foodland Super Market, Ltd.
Michael Forman
Marion C. Foster
Mary D. and Walter Frear
Eleemosynary Trust
Elizabeth A. Freeman
Mary Jo Freshley
Friends of Hawai'i Public Housing
Loretta Fuddy
Carol Fujie
Marie S. Fujii
Royce Y. Fujimoto
David Fukuda
Osamu Fukuyama
Gary Y. Funasaki
Gannett Foundation, Inc.
Garcia, Rosenberg and McKay
Benjy Garfinkle
James & Helen Gary
Charlene P. Gaspar
Gay & Lesbian Community Center
Joy T. Geramian
Tamara Gerrard
Guido Giacometti
Russell Gifford
Holbrook & Nancy Goodale
Goodfellow Bros., Inc.
Leslie Goya
Rochelle Lee Gregory
John T. Griffin
Herbert Grossman
Robert Grossmann
Howard Gudeman
Alice F. Guild
Denise Haga
Tokuko H. Hamai
Margo Hanawahine
Charles J. Hardy
Brenna Hashimoto
Frank Hata
Richard Hausman
Hawai'i Dental Assn.
Hawai'i Foodbank
Hawai'i Nurses' Assn.
Hawai'i Pizza Hut, Inc.
Hawai'i Restaurant Assn.
Hawai'i Society of CPAs
Hawai'i Urology Services, Inc.
Hawai'i Wrestling Officials Assn.

Hawai'i Youth Opera Chorus
Hawaiian Electric Industries, Inc.
Hawaiian Host, Inc.
Hawaiian Tel Employees Federal
Credit Union
Hawaiiana Management
Company, Ltd.
Naomi Hayashida
B. Jeannie Hedberg
David A. Heenan
Ronald I. Heller
Carl P. Hennrich
Ouida Mundy Hill Irrevocable Trust
William T. Hiraoka
Leona Hirata
Hon Sam Hiu
HMSA Foundation
Herbert Ho
Diane Holschuh
The Honolulu Advertiser
Honolulu Board of Realtors
Honpa Hongwanji Hawai'i Betsuin
Shoma Hotta
Housing & Community Dev.
Corp. of Hawai'i
HUGS
Barbara Ideta
Howard Ikeda
The Ironman Foundation, Inc.
Margaret Isagawa
Joni Ishihara
Island Heritage Publishing
Island Movers
Betty Iwamoto
Susan Jackson
Jamba Juice
Brad Jencks
John Child & Company, Inc.
Michael & Susan Jones
Eva Marie Judd
Betty Jung
Jane Kadohiro
Clifton Kagawa
Kahaluu Pond, Inc.
KAHEA
Jean Kajikawa
Kalama Land Company, Ltd.
Lowell Kalapa
Kamuela Kayak Corp.
Donald Kanagawa
Hilda Kaneshiro
Owen Kaneshiro
Chitose Kanuha
Howard H. Karr
Paul T. Kaufmann
Margaret L. Kaulukukui
Lucy Kawaihalau

Kawailoa Development
Garret J. Kawamura
Kies Consulting, L.L.C.
Carol Kikkawa-Ward
Karen Kimura
King Kekaulike High School
David Knight
Franklyn Kobayashi
Laraine K. Koga
Ruth K. Koga
Katharine P. Kohler-Yap
Russell Kokubun
Hideo Kondo
Gladys Kotaki
Ward Kotaki
Wayne Kotaki
Friends Of Ron Kouchi
KTA Super Stores
Audrey Kubota
Alton T. Kuioka
Anne J. Kukea
WB Kukio Resorts, LLC
Leslie Kunihiisa
June Kunimoto
Hanako L. Kuniyoshi
Kristine Kurey
Kevin R. Kuroda
Janis L. Kuromoto
Iris C. Kurosawa
Prudence Kusano
Lahainaluna HS Foundation
Lanai Company, Inc.
Kaleinani M. Larsen
Sheree Latif
Lansdale Lau
Joanne T. Le
Benjamin Lee
Clarence Lee
Barbara W. Leong
Lewis & Company
Pat Lillis
Lima Kokua, Inc.
Dennis B. Lind
Christine Ling
Mary Litaker Trust
Anna M. Liu
Karl H. Lo
Mary Anne Long
Longs Drug Stores California, Inc.
Paul & Violet Loo
Wilson M. Loo
Gordon W. Loui
Louis Vuitton Hawai'i, Inc.
Colin L. Love
Mary M. Love
Ivan M. Lui-Kwan
Kenny Lum



Tan Tek Lum
 Joanne L. Lundstrom
 Jennifer M. Ly
 John Lydgate
 F. S. and Mary Lyman Trust
 Duncan MacNaughton
 Dale & Lynne Madden
 John K. Maesaka
 Makia & Ann Malo
 Hatsumi S. Maretzki
 Bob Martinson
 Calvin Masaki
 Margaret K. Masunaga
 Barbara G. Mathews
 Ellen Matoi
 Leslie Matsubara
 Joan Matsukawa
 Christine Matsumoto
 Isabelle Matsumoto
 Harold Matsuura
 Malia Mattoch
 Maui Tradewinds Vacation Rental
 Elizabeth McCutcheon
 Sarah S. McDermott
 Patricia McGuire
 McInerney Foundation
 Sophia A. McMillen
 Media Links
 Mental Health Assn.
 Ron Metter
 Hilda Michioka
 Robert & Evanita Midkiff
 Jon Miho
 Lawrence Milke
 Judith Mikami
 Raymond Milici
 P'rieka Miller
 Wayne & Colleen Minami
 Adele Mitchell
 Stacy Miyake
 Abe Miyasaka
 Glenn K. Miyataki
 Barbara Molina Kooker
 William C. Moore
 Beatrice M. Moreira
 Helen Morgan Residuary Trust
 Connie E. Morioka
 George A. Morris
 W. M. Mullahey
 Kimu Naauao
 Joan Naito
 Clara Nakahara Trust
 Stanley S. Nakakura
 Janice Nakama
 Fay Nakamoto
 Harvey Nakamura
 Irene T. Nakamura

Suzanne Nakoa
 James Napier
 National Academy of Sciences
 National Arts Stabilization, Inc.
 Native Hawaiian Chamber
 of Commerce
 Roger Netzer
 Aiwah K. Ng
 Charles S. Niitani
 Edwin M. Niitani
 George T. Niitani
 Wilfred Nishi
 Walter S. Nobuhara
 Patrick A. Norman
 Charlene Norris
 North Kohala Coast Volunteer
 Fire Company
 William D. O'Connor
 Lily Ochoco
 Office of Hawaiian Affairs
 Nancy W. Ogburn
 Roy Ohye
 George S. Okada
 Judith Okamoto
 Jane T. Oku
 Sada Okumura & John Drouilhet
 Dorothy K. Ono
 Michiko Ono
 Kay Onzuka
 Opah Networks, Inc.
 Orange County Community
 Foundation
 Landis W. Ornellas
 Judy S. Osato
 Oshima Chun Fong & Chung LLP
 Robert C. Oshiro
 Ruth K. Ota
 Outrigger Hotels Hawai'i
 Flora T. Ozaki
 The David and Lucile Packard
 Foundation
 PAHIO Resorts, Inc.
 Pali Florists & Gift Shop
 Sydney Jean Palm-McIntosh
 Alvin Pang
 Gerald M. Pang
 Dr. and Mrs. L.Q. Pang Foundation
 Pantheon Company, Ltd.
 Eleanor L. Park
 Diane J. Paton
 David P. Penhallow
 Peninsula Community Foundation
 Rose F. Perenin
 Michael W. Perry
 PHG Foundation
 Diane J. Plotts
 David W. Pratt

PriceWaterhouseCoopers LLP
 Cheryl B. Prince
 Princeville Corp.
 Quality of Life, Inc.
 The Queen's Medical Center
 Donna L. Ramirez
 Alejandra Ramos
 Frank Ramos
 Lary D. Ratliff
 Alshaa T. Rayne
 Rehabilitation Hospital of the Pacific
 Thomas Reppun
 Residential Choices, Inc.
 Richard R. Kelley Living Trust
 Madelene A. Robinson
 Terence Rogers
 Jean E. Rolles
 John M. Ross Foundation
 Judith Rostrom
 Gordon Russell
 Lei A. Saito
 Saiva Siddhanta Church
 James K. Sakai
 Thelma Sakane
 Thomas S. Sakata
 Lani A. Sakoda
 M.F. Salt Company, Inc.
 Beatrice Samaritano
 Thanh-Lo Sananikone
 Frank H. Sayre
 Susan H. Sayre
 The James and Patricia Schuler
 Foundation
 Andy Schwartz &
 Susie Hayes-Schwartz
 Rupert W. Scofield
 Susan E. Scott
 Frank Seleny
 Mary Sellers
 Brian Sen
 David A. Sereno
 Servco Foundation
 Deborah Shafer
 Barry L. Shain
 C. Jean N. Shewey
 Joanne Shigekane
 Esther Shigeta
 Joan Shinn
 Janice Shoultz
 DG Siu & Associates, Inc.
 George & Nancy Slain
 Gregory Smith
 Smith-Waterhouse Family of Koloa
 Peter P. Song
 Patrick T. Sonoda
 Paulina L. Sorg Irrevocable Trust
 Colleen Sotomura

Mary Stanton
 Star Markets, Ltd. and
 The Fujeki Family Fnd.
 State of Hawai'i
 Marvin E. Stawicki
 Dwayne & Marti Steele
 John J. Stepulis
 Eleanor Sterling
 William Strong
 The Strong Foundation
 Esther Stubblefield
 Yasuo Suga
 Joanna L. Sullivan
 Grant Sumida
 Scott Susman
 Rudolph A. Sylva Trust
 Matsuo Takabuki
 Elizabeth W. Takahashi
 Donald M. Takaki
 Alma Y. Takata
 Jerald S. Takesono
 Kelvin & Janice Taketa
 The Aiko Takitani Trust
 Dana-Ann S. Takushi
 Lenette Tam
 Lorraine Tamaribuchi
 Joy Tamaribuchi-Geramian
 Barbara Ann Tanner
 Donna Tanoue
 Nancy T. Taylor
 Susan Tengan
 Lorraine M. Teniya
 Brenda Teranishi
 Tesoro Petroleum Companies, Inc.
 Jane H. Testa
 Paul Theroux
 Joan P. Thompson
 Charles Toguchi
 Mitsuo Toguchi
 Suzanne Tokioka
 K S. Tom
 Torkildson, Katz, Fonseca, Jaffe,
 Moore & Hetherington
 Mavis H. Tracy
 Trinity Properties, Ltd.
 Fred Trotter
 Laila Twigg-Smith Trust
 Blossom Y. Tyau
 University of Hawai'i Foundation
 Gordon Uyeda
 Christine van Bergeijk
 Variety School of Hawai'i
 Teresa Vast
 Amanda M. Vesey
 John W. Vollrath
 Waialae Country Club
 Charles Wall

Esther I. Watada
 Jeffrey & Lynn Watanabe
 Mary P. Waterhouse
 Kendall P. Watts
 Robert T. Watts
 Jhamandas Watumull
 Joseph & Leonora Wee
 Harry & Jeanette Weinberg
 Foundation, Inc.
 Lydia A. Weiss
 Edward J. Weldon
 Laura Weldon Hoque
 Loretta Wells
 Katherine H. Wery
 Damaris Wescott
 Janet L. Weyenberg
 Robert & Karen White
 Deborah Wiley
 Melvyn M. Wilinsky
 Grace Withington
 Betty Ching Wo
 Robert W. Wo
 Walter K. Won
 Cecily Wong
 Linda Y. Wong
 Marilyn Wong
 Vernon Y. Woo
 Mona Wu
 Loretta Yajima
 Joanne Y. Yamada
 Ethel H. Yamane
 Barbara Yamashita
 Faith Yamauchi
 Bay K. Yee
 Clarence K. Yee
 D. G. Yee
 Stanley Yee
 Luke Yeh
 Andrea B. Yim
 Nancy Yogi
 Kathleen L. Yokouchi-Tokumoto
 Joan Yokoyama
 Carolyn Yoshihara
 James Yoshimori
 Nadao & Mieko Yoshinaga
 Foundation
 Haruyo Yoshioka
 Robert Young
 Vivian Young
 Joann A. Yukimura
 Vernon M. Zane
 Erik Zen
 Mark Zen
 Tracy Zen
 The James & Sally Zukerkorn
 Foundation



Thank you to those who arranged for a gift to the
Hawai'i Community Foundation in their will,
trust, charitable gift annuity or pooled life income fund.

LEGACY SOCIETY MEMBERS

Richard Aadland
Ernestine Armstrong
Robert & Jacqueline Bean
Renold B. Ben
Wayne R. Benner
Susan Bradford
Frances K. Brossy
Margaret Buchwach
Chia-Ling Chang
Herbert Y. Choy
Henry B. Clark
Anne Clifton
William & Carol Coops
Richard & Brenda Cowan
Richard Cundy
C. Frank Damon
Clarence & Gertrude Ferdun
Ceferino & Mitsuko Fernandez
Jerrold & Niki Fuller
Marc W. Greenwell
Randolph Hack
Walter D. Haskins
Constance A. Hassell
Ronald J. Hays
Kapua Heuer
Laila F. Hoffmann

Sadao & Jean Honda
Alcy Johnson
Melvin & Barbara Kagan
Leonard & Rebecca Kamp
Elmer Keao
Gerry & Karen Keir
Trini Kilgo
Henry A. Koszewski
Ivor Kraft
Gerald W. Kwock
Jack & Chonita Larsen
Chester P. Lau
Donald & Bernadette Lau
Paul & Violet Loo
John E. Loomis
Cora A. Manayan
Karen Masaki
Robert & Evanita Midkiff
Hazel Milnor
Esther A. Mitsunaga
Astrid Monson
Mary May Moore
Harold Mortenson
Melvyn & Sadie Murakami
Robert & Helen Nichols
Jennie L. Phillips

Henry E. Renteria
Michael & Kathleen Roeder
Claude Rothe
Mary C. Sanford
Marsha Schweitzer
Joanne Shigekane
Don H. Smith
Russell H. Taft
John & Mary Karyl Thorne
Joseph & Thelma Tyler
Totthi Vreedenburgh
Kendall P. Watts
Gulab & Indru Watumull
Katherine H. Wery
Robert & Karen White
John & Rae Yanagihara





GIVING BACK THROUGH THE HAWAI'I COMMUNITY FOUNDATION

Established in 1916, the Hawai'i Community Foundation is a statewide, charitable services and grantmaking institution endowed with contributions from many donors.

Giving back through the Hawai'i Community Foundation provides you with these benefits:

Flexibility

We'll set up a relationship with you that makes it simple to give. You can determine the purpose and name of your fund and the level of involvement that you want. We know that your wishes may change and we will help you find the right fit every time.

No paperwork

We handle the initial and ongoing administration, bookkeeping and tax reporting associated with gifting assets.

Maximum tax advantages

We provide maximum tax advantages permitted by law while allowing your gift to do more for you and the community.

Accountability

An active board of knowledgeable volunteer community leaders governs the Foundation.

Low cost

Because your professionally managed fund is part of a larger pool of assets, it receives more diversification, lower fees and potentially better performance.

Personalized service

We're here to serve you. We will provide you with grantmaking ideas and distribute your gifts to the charities that you recommend. You will receive reports on how your investment is making a difference in our community. And if you desire, you can attend nonprofit site visits and foundation-sponsored events to stay informed about the issues that matter to you.

Community connections

No other charitable entity in Hawai'i can respond to the smallest community needs and the broader statewide issues like we can.

CHARITABLE FUNDS THAT STRENGTHEN OUR COMMUNITY

Community Needs Funds –

These funds are the most flexible of all funds because they have the greatest potential to respond to new and emerging needs in our community. Donors to these funds gave full discretion to the Foundation's Board of Governors to authorize grants that provide the greatest impact.

Board of Governors Fund
Burkland Family Fund
Busjaeger Fund
Margaret Chang Fund
Community Needs Fund
(Discretionary General Fund)
Lowell Dillingham Fund
Charlotte M. Florine Fund
Victoria S. Geist Fund
William & Edna Howe Fund
Thomas & Mary Litaker Fund
Mr. & Mrs. Frederick K. Makino
Memorial Fund
Arnell Petrie Tout Fund

Donor Advised Funds –

These funds provide donors with simplicity and flexibility. Donors are able to select the level of involvement of grantmaking they desire. Funds are established by individuals, families or groups. The objectives of donor advised funds tend to be broad, encompassing charitable, religious, educational, scientific and literary purposes.

Oscar L. & Ernestine H. Armstrong
Advised Fund
Billie Beamer Educational Fund
Robert R. & Jacqueline J.H.
Bean Fund
Tahmi Brodhead Fund
James & Abigail Kuaihelani
Campbell Fund
Central Pacific Bank Community
Endowment Fund
Chan Family Fund
Philip & Gerry Wong Ching
Family Fund
Dr. Albert C.K. Chun-Hoon Fund
William R. & Carol J. Coops
Charitable Fund
Edward J. Doty Charitable Fund
J.C. Earle Family Fund
Economic Opportunity Fund
El Arco Iris Fund
Emergency Group Fund
Kekumuola Fund
Muriel MacFarlane Flanders Fund
Friends of Diamond Head Fund
James F. & Helen G. Gary
Charitable Fund
Goodale Family Fund
HDA Relief Fund
Hawai'i Police Memorial Fund
Hawaiian Legacy Foundation Fund
Takuji Hayashi, M.D. Memorial Fund
Tommy Holmes Foundation Fund
Honolulu Board of Realtors
Housing Fund
Sheridan C.F. Ing Fund
Island Movers/Donald M.
Takaki Fund
John A. Burns School of Medicine
Alumni Association Fund



Lesley & Spencer Johnson Fund
Kaua'i Aloha Endowment Fund
Kawakami Family Fund
Keiji Kawakami Art Foundation Fund
Koa Fund
Kosasa Family Fund
Koshiba Family Fund
Krucky 'Ohana Fund
Kukio Community Fund
Walter H. Kupau Memorial Fund
Milton & Henrietta Kushkin Fund
D. Lau Family Fund
Lima Kokua Fund
Paul C.T. & Violet Shaw Loo Fund
Jack & Marie Lord Fund
George Mason Fund
Muffles Fund
Eleanor & T. Dudley Musson Fund
New Moon Fund
Robert C. & Helen F. Nichols Fund
Pacific Century Fellows
Endowment Fund
Pacific Medical Administrative
Group Endowment Fund
REC Fund
Steve & Joanne Ruppert Fund
Gordon Russell Fund
James Ward Russell, Jr. Fund
Sananikone-Le Khac Family Fund
Daniel R. Sayre Memorial Fund

Suzie Hayes-Schwartz & Andy
Schwartz Fund
The September 11th Fund
Joanne Holmes Shigekane Fund
George C. & Nancy Wright
Slain Fund
Laura & Dallas Smith Family Fund
Spoehr Family Fund
Star Markets, Ltd. & The Fujieki
Family Foundation Fund
Dwayne & Marti Steele Fund
Karen & David Stoutemyer
Charitable Fund
Colleen Sullivan Fund
Patrick J. Sullivan Fund
Takenaka Kaua'i Cultural &
Environmental Fund
Taketa Family Fund
Margaret & John Ushijima Fund
Victims of Violent Crimes in
Hawai'i Fund
Mary & Paul Wagner Charitable Fund
Jenai & Roger Wall Family Fund
Leonora F. & Joseph K. Wee
Family Fund
Kendall Palmer Watts Fund
Kitty & Buzz Wo Family Fund
Yamada Scott Family Fund
Nadao & Mieko Yoshinaga
Education Fund



Designated Funds –

These funds were endowed by individual donors or organizations to ensure that their charities of choice will continue. In each case, the contributor selected one or more nonprofit organizations as the charitable beneficiaries of grants for as long as the charities exist.

Grace K.J. Abernethy Fund
 Brilly & Richard Akeroyd Fund
 Aloha Temple Patient Transportation Fund
 Aloha United Way Endowment Trust Fund
 Louis Asing Fund
 Atherton Fund
 A.S. Atherton Memorial Scholarship Fund
 John & Dorothy Baird Fund
 Bobby Benson Center Endowment Fund
 Charles & Helen P. Bishop Fund
 Christian Bosse Fund
 Brodhead Family Scholarship Fund
 Robert E.L. Brooks Fund
 Alberta E. Brown Fund
 Brownee Brown Performing Arts Scholarship Fund
 C.H.A.N.G.E. Fund
 George Reynold Carter Fund
 Rebecca Carter Fund
 Robert F. Chalmers Memorial Fund
 Mary Wilson Crawford Fund

Minnie P. Cuthbertson Fund
 Elizabeth Flora Deinert Fund
 Gwendolen B. Dekum Fund
 Diamond Head Theatre Fund
 Kay A. Edwards Memorial Library Charitable Trust Fund
 Edward M. Ehrhorn Entomological Scholarship Fund
 Gay & Lesbian Community Center Endowment Fund
 George Howe Farnsworth Fund
 Friends of Princess Victoria Ka'iulani School Fund
 Fred I. Gilbert, Jr. Medical Research Foundation Fund #1
 Stephen G. Greenough Memorial Fund
 Al Harrington & Bill Paul Fund for Sultan Easter Seal School Scholarships Fund
 Hawai'i Business Roundtable Education Fund
 Hawai'i Pacific University, Hawai'i Loa Fund
 Hawai'i Public Television Endowment Fund
 Hawai'i Youth Opera Chorus Fund
 Harry Hewitt Fund for Advancement & Improvement of Justice
 Ouida Mundy Hill Memorial Fund
 Irene I'i Holloway Fund
 Honpa Hongwanji Hawai'i Betsuin Fund
 Honolulu Symphony Musicians Fund
 Honolulu Symphony Society Fund
 HUGS Endowment Fund

Dora R. Isenberg Molokoa Fund
 Edwin T. & Leilani Kam Scholarship Fund
 Thomas J. Keller Trust Fund
 John F. Kennedy Memorial Scholarship in History Fund
 Clifford Kimball Memorial Fund
 King Lunalilo Foundation Fund
 Ellen M. Koenig Memorial Fund
 Marie Kohli Fund
 Lahainaluna High School Foundation Endowment Fund
 Jeanette A. Le Vine - Temple Emanu-El Fund
 Elizabeth Leithead Fund
 Colin Lennox Botanical Research Fund
 Anna B. Lindemann Fund
 Katherine Hopper Livingston Fund
 Susan Mahn Fund
 Maui Academy of Performing Arts Scholarship Fund
 Mental Health Association in Hawai'i Endowment Fund
 Mental Health Kokua Fund
 Aunt Maggie Monteiro Orphan Fund
 Clara T. Nakahara Fund
 Annette Tyler North Fund
 Lenore & Chester O'Brien Fund
 Josie & Don Over Memorial Fund
 Parker & Bernieri Fund for Le'ahi Hospital
 Prisanlee Fund
 Virginia Pearson Ransburg Fund
 Leon J. Rhodes Fund
 William S. Richardson Fund

Julia Waterhouse Rodenhurst Fund
 Madelyn Ross Fund
 Maybelle F. Roth Fund
 Maybelle F. Roth Research Prize in Conservation Biology Fund
 Royal Hawaiian Band Sick Benefit Fund
 Salvation Army Fund
 Mary Sanford – Hawaiian Mission Children's Society Fund
 Walter & Cathy Scott Memorial Fund
 A.P. Sereno Memorial Scholarship Fund
 Laura D. Sherman Fund
 Cyril O. Smith Fund
 Elma F. Taylor Fund
 Takenaka Kaua'i Healthcare Fund
 David & Frances Tatman Heifer Project International Fund
 Monsignor Benedict M. Vierra Fund
 Marjorie Waterhouse Watts Reading Enhancement Grant - Koloa School Fund
 Eva H. Webb Fund
 Franklin Benjamin Wells Fund fbo Public Television
 Walt Whitman Fund
 William Robert Wickland Fund
 Henry H. Wong Fund
 Ivena Ziegenhein Fund



Field Of Interest Funds –

These funds were created by contributors who stipulated that grants be made in a particular field, or to benefit a certain group of people. A field of interest fund assures the flexibility to adjust to future changes; the organizations or charities serving that field may change, merge or cease to exist, yet the need may continue.

4Charity Fund
Gwenfread Elaine Allen Fund
Ellen R. Ashton Fund
Hartwell & Rebecca Carter Fund
Baciu Cultural Fund
Robert Emens Black Fund
Wilson P. Cannon Fund
Environment Fund
'Ewa Beach Community Fund
Oscar & Rosetta Fish Speech Therapy Fund
Thz Fo Farm Fund
Foodland Community Fund
Hawai'i Children's Trust Fund
Hawai'i Island Fund
Hawai'i Pizza Hut, Inc. Literacy Fund
Hawai'i Tobacco Prevention & Control Trust Fund
George J. Henritzky Memorial Fund

Historic Preserves of Hawai'i Fund
May Templeton Hopper Fund
Iniki Disaster Relief Fund
Jessie D. Kay Memorial Fund
Ke Au Hou, Hawai'i's Youth Millennium Fund
Leslie S. King Fund
June Ann Kirkpatrick Fund
Annie Sinclair Knudsen Fund
Albert T. Koenen Fund
Lana'i Community Benefit Fund
Chonita & Jack Larsen Fund
Abraham & Annie Lau Children's Fund
Jeanette A. Le Vine Fund
Le'ahi Fund to Treat and Prevent Pulmonary Disease
Live Aloha Fund
Malama I Ke Ola 'O Na Wahine
Ingeborg v. F. McKee Fund
Natural Resources Conservation Endowment Fund
Neighborhood Grants Program Fund
Rev. Takie Okumura Family Fund
Robert C. Perry Fund
Pikake Fund
Public-Private Partners for Literacy Trust Fund
James & Winifred D. Robertson Memorial Fund
Irving L. Singer Fund

Richard Smart Fund
Alice M.G. Soper Fund
Adrienne Wong Toyozaki Fund
Laila Twigg-Smith Art Fund
Shirley Ann Stringer-Heller Medical Research Fund
Theodore A. Vierra Fund
Bernice & Conrad von Hamm Fund
Kitaro Watanabe Fund
Harry & Jeanette Weinberg Fund for Family Literacy
West Hawai'i Fund
Lillian K. Wilder Fund
Women's Fund of Hawai'i
Tai Up Yang Fund
Henry A. Zuberano Early Education Fund

Special Projects Fund –

This fund was established to receive contributions for time-limited special purposes. The ongoing or new special projects include:

Affinity Groups
Agenda for Building Community (ABC) Fund
Alert Alarm of Hawai'i Social Capital Fund

Chevron Teacher/Classroom Fund
Environment Fund
Environmental Heroes Public Education Fund
Friends of Public Education Fund to Empower Excellence in Education
Hawaiian National Bibliography 1780-1906
Heather Ho Fund
Ho'okupu Trust, A Legacy for Tomorrow's Child
International Giving Program
Li Xing School Fund
National Arts Stabilization Evaluation Project
Organizational Effectiveness Program
POP Accountability
PRSA
Principals' Initiative
Louis Pohl Trust Fund
Walk the Talk Fund
West Hawai'i Development Fund
Youth Development
Youth Mapping Project





Scholarships – These funds are established by private foundations, individuals, businesses and organizations to assist Hawai'i residents in achieving their educational endeavors and to inspire the pursuit of lifelong learning.

2200 Educational Scholarship Fund
 American Samoa Scholarship Program Fund
 Kellie Ann Andrade Scholarship Fund
 Laura Jean Armstrong Fund
 Aspect Technology Fund
 Earl E. Bakken Engineering Fund
 Troy Barboza Education Fund
 Bick Bickson Scholarship Fund
 E.E. Black Scholarship Fund
 Mary Bloder Scholarship Fund
 Ron Bright Scholarship Fund
 Castle & Cooke Mililani Technology Park Scholarship Fund
 Castle & Cooke George W.Y. Yim Scholarship Fund
 Henry & Dorothy Castle Memorial Scholarship Fund
 Camille C. Chidiac Fund
 Dolly Ching Scholarship Fund
 Community Scholarship Fund
 George & Lucille Cushnie Scholarship Fund

Bal Dasa Scholarship Fund
 John Dawe Fund
 Edward J. Doty Scholarship Fund
 Laura N. Dowsett Fund
 Rosemary & Nellie Ebrie Fund
 Jean Erdman Scholarship Fund
 Blossom Kalama Evans Memorial Scholarship Fund
 Ambassador Minerva Jean Falcon Hawai'i Scholarship Fund
 Wallace Rider Farrington Memorial Scholarship Fund
 Filipino Nurses' Organization of Hawai'i Scholarship Fund
 Financial Women International Fund
 Oscar & Rosetta Fish Scholarship Fund
 Jean Fitzgerald Scholarship Fund
 Friends of Hawai'i Public Housing Fund
 Laheenae Rebecca Hart Gay Fund
 Doris & Clarence Glick Classical Music Scholarship Fund
 Thelma Grace Hansen Fund
 Margaret Follett Haskins Scholarship Fund
 K.M. Hatano Scholarship Fund
 Hawai'i Wrestling Officials Scholarship Fund
 Ouida Mundy Hill Memorial Scholarship Fund



Chinn Ho Scholarship Fund
 Fletcher & Fritzi Hoffman Educational Fund
 Ho'omaka Hou—A New Beginning Fund
 Chun Ku & Soo Young Huang Foundation
 David L. Irons Memorial Scholarship Fund
 Arthur Jackman Scholarship Fund
 Margaret Jones Memorial Nursing Fund
 Ka'a'awa Community Fund
 Esther Kanagawa Memorial Art Scholarship Fund
 Kapolei Business & Community Scholarship Fund
 Kawasaki-McGaha Scholarship Fund
 King Kekaulike High School Scholarship Fund
 Kohala Ditch Education Fund
 Koloa Scholarship Fund
 William James Lanquist & Dorothy Bading Lanquist Fund
 Tommy Lee Memorial Scholarship Fund
 Dan & Pauline Lutkenhouse & Hawai'i Tropical Botanical Garden Scholarship & Education Fund
 Kenneth Makinney & David T. Pietsch Families Scholarship Fund
 Makia & Ann Malo Scholarship Fund
 Cora Aguda Manayan Fund
 Frank H. Minato Scholarship Fund
 Carl K. Mirikitani Memorial Fund

Native Hawaiian Chamber of Commerce Scholarship Fund
 Craig D. Newman Memorial Fund
 Ellison Onizuka Memorial Scholarship Fund
 PHG Foundation Fund
 Pasuquinio Association of Hawai'i Scholarship Fund
 Eugenia Jacqueline Perry Fund
 Gail A. Perry Fund
 Lilian B. Reynolds Fund
 Robanna Fund
 Kurt W. Schneider Memorial Scholarship Fund
 Paulina L. Sorg Scholarship Fund
 Shuichi, Katsu & Itsuyo Suga Scholarship Fund
 Jane Suganuma Memorial Scholarship Fund
 Quentin Underkoffler Scholarship Fund
 University of Redlands Hawai'i Alumni Scholarship Fund
 Nick van Pernis Scholarship Fund
 Charles Lacy Veach Memorial Scholarship Fund
 Frances S. Watanabe Memorial Scholarship Fund
 West Kaua'i Scholarship Fund
 Alma White - Delta Chapter, Delta Kappa Gamma Scholarship Fund
 Vicki Willder Scholarship Fund
 Toraji & Toki Yoshinaga Scholarship Fund
 Henry A. Zuberano Scholarship Fund

VOLUNTEER ADVISORY MEMBERS

LAURA JEAN ARMSTRONG FUND

Wayne Kotaki
Barbara Ideta
Fay Nakamoto
Barbara Yamashita
Kathy Yokouchi

EARL E. BAKKEN ENGINEERING FUND

Betsy Cole
Sharon Chern
Thomas Pack
Alan Nakagawa
Lawrence Lowe

TROY BARBOZA EDUCATION FUND

Faith Bergwinkel
Bruce Dusseault
Paul Epstein
Darolyn Lendio
Attilio Leonardi

BICK BICKSON SCHOLARSHIP FUND

Joan Bickson
Martin Bickson
Michael Bickson
Nalani Bickson
Sharon Blakely
Diane Just
Darrel Kloninger
Beth Milici

E. E. BLACK SCHOLARSHIP FUND

Terrill Chock
April Inouye
Anthony Ramos

MARY JOSEPHINE BLODER SCHOLARSHIP FUND

Joyce Chapman
Leo Delatori
David Murata
Michael Nakano

RON BRIGHT SCHOLARSHIP FUND

Ron Bright

CASTLE & COOKE GEORGE W. Y. YIM SCHOLARSHIP FUND

Beverly Garcia
Wallace Miyahara
Kevin Shaney
Lucien Wong
Kathleen Yonaoshi

DOLLY CHING SCHOLARSHIP FUND

Roy Amemiya Jr.
Dorothy Ching
Lynn Fallin
Lorene Okimoto
Barbara Sakamoto
Winifred Tanaka

BAL DASA SCHOLARSHIP FUND

Bal Dasa

JOHN H. DAWE DENTAL EDUCATION FUND

Sanford Asahina
Theodore Loo
Roy Mabe
Kenneth Minato
Harry Morikawa

EDWARD J. DOTY SCHOLARSHIP FUND

David Doty
John Doty
Maureen Taylor

KAY A. EDWARDS MEMORIAL LIBRARY CHARITABLE TRUST FUND

K. C. Edwards
Janet Fehr
Joyce van Zwalenburg

BLOSSOM KALAMA EVANS MEMORIAL SCHOLARSHIP FUND

Anna Ater
Jim Evans
Michael Evans
Kaina Waia'u

'EWA BEACH COMMUNITY FUND

Al Keali'i Chock
Ted Farm
Rowena Martinez
Paul Oshiro
Rudolfo Ramos
Frances Rivera
Tim Tucker

AMBASSADOR MINERVA JEAN FALCON HAWAII SCHOLARSHIP FUND

Felipe "Jun" Abinsay
Lyna Burian
Tony Sagayadoro
Nic Musico
Silayan Casino

FAMILY LITERACY GRANTMAKING FUND

John Aki
Ward Almeida
Avery Chumbley
Frank Haas
Joan Lee Husted
Ed Jim
Shelley Ng
Richard Palma
Del Wong

WALLACE R. FARRINGTON MEMORIAL SCHOLARSHIP FUND

Austin Dias
John Flanagan
Charles Hite
Jan Javinar
Gail Koki
Arlene Lum
Trinidad Peltier
Eugene Shen
Michael Unebasami

FILIPINO NURSES ORGANIZATION OF HAWAII FUND

Amy Guillermo
Linda Lavarias
Mario Palma
Agnes Reyes
Josie Rojas

FINANCIAL WOMEN INTERNATIONAL SCHOLARSHIP FUND

Gail Nakama
Linda Nakamura
Dori Palcovich
Gwen Yamamoto

JEAN FITZGERALD SCHOLARSHIP FUND

Masu Kusume Dyer
Marilyn Kiner
Faye Maeshiro
Judy Moody
Barry Nakasone

FOODLAND COMMUNITY FUND

Val Iwashita
Jenai Wall
Roger Wall

MARGARET FOLLETT HASKINS SCHOLARSHIP FUND

Katherine Acks
Maggie Bruck
Bud Clark
Renee Riley
Ron St. John

HAWAII CHILDREN'S TRUST FUND

Bruce Anderson
Dennis Arakaki
Susan Chandler
Suzanne Chun Oakland
Marguerite Simson, Esq.
Michael A. Tongg, Esq.
Alan Yamamoto

HAWAII TOBACCO PREVENTION & CONTROL TRUST FUND

Juliet Begley
Janice Bond
Margery Bronster
Kenneth I. Crow
Fred Hirayama
Julian Lipscher
Wallace J. Matthews, Jr.,
M.D.

John McDonnell, M.D.
Ginny Pressler, M.D.
Elizabeth Tam, M.D.
Dan Yahata

HISTORIC PRESERVES OF HAWAII FUND

Agnes Conrad
Ron Lee
Spencer Leineweber
Randolph Moore
William Paty, Jr.
Pikake Pelekai
Yoshihiko Sinoto
Myra J. Tuggle

CHINN HO SCHOLARSHIP FUND

Derrick Hatami
Barbara Kakuda
Robyn Keawe
Neal Takamori
Larry Takumi
Penny Tom

TOMMY HOLMES FUND

Ruth Ann Becker
Sarah Chinen
Chris Colgate

HONOLULU BOARD OF REALTORS HOUSING FUND

Dale Bordner
John R. Connelly
Patti Ann Hokama
Anne I. Keamo
Allison Lum
Jeffrey M.C. Lum
P.J. Moore
Guy K. Tamashiro

HO'OMAKA HOU—A NEW BEGINNING FUND

Karen White
Phillip White
Betty Vitousek

DAVID L. IRONS MEMORIAL SCHOLARSHIP FUND

Anne Irons

ARTHUR JACKMAN SCHOLARSHIP FUND

Clytie Mead
Peter Sparks

MARGARET JONES MEMORIAL NURSING FUND

Robert Anders
Marian Benham
Ruth Honda
Jane Ibara
Colleen Minami
Ruth Stepulis
Susan Wong

KA'A'AWA COMMUNITY FUND

Melanie Gibb
DeeDee Letts
Bob Stauffer

JESSIE D. KAY MEMORIAL FUND

Frank Atherton
E. Allison Kay
Jan Kuramoto

**KAUA'I ALOHA
ENDOWMENT FUND**

Barbara Curl
Roberta Haas
Charlie King
Mayor Maryanne Kusaka
Allan Smith
Stephanie Kaluahine Reid
Bodhinatha Veylanswami

**ELLEN M. KOENIG
MEMORIAL FUND**

Alfred H. H. Hee
Walter S. Kirimitsu
George S. Brosky

**ANNIE SINCLAIR
KNUDSEN FUND**

Myles Shibata
Millie Wellington

**KOHALA DITCH
EDUCATIONAL FUND**

Rodney Inaba
William Shontell

**KOLOA SCHOLARSHIP
FUND**

Yvette Blake
Byron Cleeland
Maxine Correa
Peter Dease
Frances Frazier
Pauline Hadama
Phyllis Kunimura
Karl Lo
Barbara McCord
Robert Watts

**KOSASA FAMILY
FUND—ABC STORES
SCHOLARSHIP**

Terrill Chock
Anthony Ramos
April Inouye

**KUKIO COMMUNITY
FUND**

Sam Ainslie
Carl Carlson
BJ Kobayashi
Mike Wilson
Robert Punihaole

**LANA'I COMMUNITY
BENEFIT FUND**

Cyndi Arruiza
Joan Dela Cruz
Matthew Hart
Jodi Ige
Larry Kawasaki
Jesse Meyer
Pierce Meyers
John Ornellas
Thomas Selby
Neal Tamashiro
Eydie Treutler
Jackie Woolsey

**CHONITA & JACK
LARSEN FUND**

Gracia R. Bell
Chonita Larsen
Julia Phillips
L. Thomas Ramsey
Alice Di Giorgio Richardson
Luanna Rowland
Barbara Rutter
Richard R. Szuster
Tiare Newport
Robert M. Witt

**LE'AHU FUND
SCIENTIFIC REVIEW
COMMITTEE**

David Easa, M.D.
Christine S. Fukui, M.D.
Alvin Furuike, M.D.
James H. Gollop, M.D.
John Hardman, M.D.
James Lumeng, M.D.
Lawrence Rotkin, M.D.
John A. Sheedy, M.D.
Stuart Sugihara, M.D.
Frank Tabrah, M.D.

**TOMMY LEE MEMORIAL
SCHOLARSHIP FUND**

Thomas Lee
Beverly Garcia
Kari Murray
Adele Tsukamoto
John Yanagihara

**JEANETTE A. LE VINE
FUND**

Steve Edwards
Avi Magid
Linda Martell
Lyn Zukerkorn
Sue Alden-Rudin

**KENNETH MAKINNEY &
DAVID T. PIETSC
FAMILIES SCHOLARSHIP
FUND**

Joseph Goldcamp III
Edwina Romig

**MAKIA & ANN MALO
SCHOLARSHIP FUND**

Keala Akiona
Vicky Holt-Takamine
Momi Kamahale
Noelani Mizukami
Kanalu Young

**CORA AGUDA
MANAYAN FUND**

Cora Manayan

**MEDICAL RESEARCH
ADVISORY
COMMITTEE**

Sandra Chang, Ph.D.
David Curb, M.D.
Velma Asayo Kameoka,
Ph.D.
Scott Lozanoff, Ph.D.
Elna M. Masuda, M.D.
John Melish, M.D.
Paul Q. Patek, Ph.D.
Helen Petrovich, M.D.
Todd Blake Seto, M.D.
Andre Theriault, Ph.D.

NEW MOON FUND

Bennett Dorrance
Thuy Fujimoto
David Rose

**CRAIG D. NEWMAN
MEMORIAL
SCHOLARSHIP FUND**

C. Jean Shewey
Steve Knight

**REV. TAKIE OKUMURA
FAMILY FUND**

Diane Kodama
Grant Lee
Robert Midkiff
Sada Okumura, M.D.

**ELLISON ONIZUKA
MEMORIAL
SCHOLARSHIP FUND**

Arthur Kimura
Anita Korenaga
Justin Mew
Barbara Rogers
Robert M. Witt

**PHG FOUNDATION
SCHOLARSHIP FUND**

Lauren Levin
Cheryl Nelson
Emmy Lou Runyan
Hank Snider

**ROBANNA
SCHOLARSHIP FUND**

Mimi Donnelly
Robert Levy
Deanna Levy

**KURT W. SCHNEIDER
MEMORIAL
SCHOLARSHIP FUND**

Tamara McGee
Susan Bailey
Paul Horner
Mark Vinsko
Pierce Meyers



**LAILA TWIGG-SMITH
ART FUND**

Waileia Davis
Duncan Dempster
Jay Jensen
Georgianna Lagoria
Galen Leong
Cade Roster
Fred Roster

**UNIVERSITY OF
REDLANDS HAWAII
ALUMNI
SCHOLARSHIP FUND**

Anna Hoover
Kum-Pui Lai
Phyllis Muraoka
Elaine Pahia
Dean Okimoto

**THEODORE A. VIERRA
FUND**

Charles E. Nelson
Earlynne F. Oshiro
Father Theodore Vierra Jr.

**BERNICE & CONRAD
VON HAMM FUND**

Michael Heihre
Meleen Corenevsky
James C. Pell

**FRANCES S. WATANABE
MEMORIAL
SCHOLARSHIP FUND**

Creighton Chang
Joyce Fasi
Wendy Ogawa
William Paik
Dennis Tanimoto

**KITARO WATANABE
FUND**

David McNeil
Ruth Ono
Kitaro Watanabe
Mac Yamaguchi

**MARJORIE WATERHOUSE
WATTS READING
ENHANCEMENT GRANT -
KOLOA SCHOOL FUND**

Leona Waterhouse Farrell
Dulce Dease Shafer
Kendall Palmer Watts
Robert Watts Jr.
Robert Watts Sr.

WEST HAWAII FUND

Balbi Brooks
Darrick Ching
Tina Clothier
Scott Craven
Darl Gleed Jr.
Wally Lau
Kenneth Ross
Dale Suezaki
Glenn Uchimura

**ALMA WHITE—
DELTA CHAPTER,
DELTA KAPPA GAMMA
SCHOLARSHIP FUND**

Rowena Blaisdell
Dee Ann Ling
Carol Okutani
Velma Omura
Elizabeth Powers

**VICTIMS OF VIOLENT
CRIMES FUND**

Lee Donohue
Pegi Scully
Glenn Sexton

**YAMADA SCOTT FAMILY
FUND—EIRO YAMADA
SCHOLARSHIP**

Ronald Yamada



SERVICES PROVIDED TO OTHER FOUNDATIONS

Hawai'i Community Foundation has contractual arrangements to provide a variety of professional grants administration services to family, corporate and independent foundations. These services include:

- Providing information to grantseekers as to what the grantmakers' interests are, and how and when proposals or applications should be submitted.
- Handling inquiries from the public and nonprofit organizations.
- Evaluating proposals and applications and making grant recommendations.
- Preparing dockets for board members' review and providing staffing for meetings.
- Maintaining records and managing correspondence.
- Preparing news releases, coordinating events, and carrying out special services to ensure the preservation of the foundation's unique image in the community.
- Providing strategic grantmaking consultation and support.

Hawai'i Community Foundation provides services to the following foundations:

Family Foundations

Atherton Family Foundation
Cooke Foundation, Limited
Fred Baldwin Memorial Foundation

Scholarship Foundations

'Aiea General Hospital Association Scholarship Fund
Hawai'i Veterans Memorial Fund
Bernice P. Irwin Trust
Ka'iulani Home for Girls Trust
Eizo & Toyo Sakumoto Trust
Gertrude S. Straub Trust, M. M. Scott Scholarship Fund
Mildred Towle Scholarship Fund
Dr. Hans & Clara D. Zimmerman Foundation

Special Field Foundations

George P. & Ida Tenney Castle Trust
Cottingham Trust for Gifted Children
George F. Straub Trust
Grace Bryan Taylor Trust
Teresa F. Hughes Trust Estate
Victoria S. & Bradley L. Geist Foundation

Converting a Private Foundation to a Component Fund

Hawai'i Community Foundation helps private foundations that choose to terminate their current status transfer their assets to the Foundation with ease. The assets of the private foundation are used to establish a component fund at the Hawai'i Community Foundation, which serves the same charitable purpose of the private foundation, but at much less cost, leaving more of the fund's earnings for grantmaking purposes.

GRANTMAKING

What's new

Our grantmaking programs enable all of us to realize our perfect vision of Hawai'i. Here's what's new in 2002:

Organizational Capacity Building Program: strengthens the internal operations of nonprofits to help them run as effectively and efficiently as their resources allow.

Mo' Bettah Together Program: increases the levels of social capital, or connectedness and trust, in our communities.

Natural Resources Conservation Marine Program: promotes the conservation and restoration of Hawai'i native nearshore marine ecosystems.

Applying for a grant

Prospective nonprofit organizations are required to submit a formal proposal that meets the Foundation's specific grantmaking priorities. In most cases, only Hawai'i organizations, either as a unit of government or one classified by the IRS as a 501(c)(3) charitable organization and not a private foundation, are eligible. Exceptions are made in specific program areas.

Find out how to apply for funding on our Web site or call the Foundation to request the latest Grantseekers' Guide. Additional information is also available for applicants seeking grants from private foundations for which HCF provides administrative assistance.



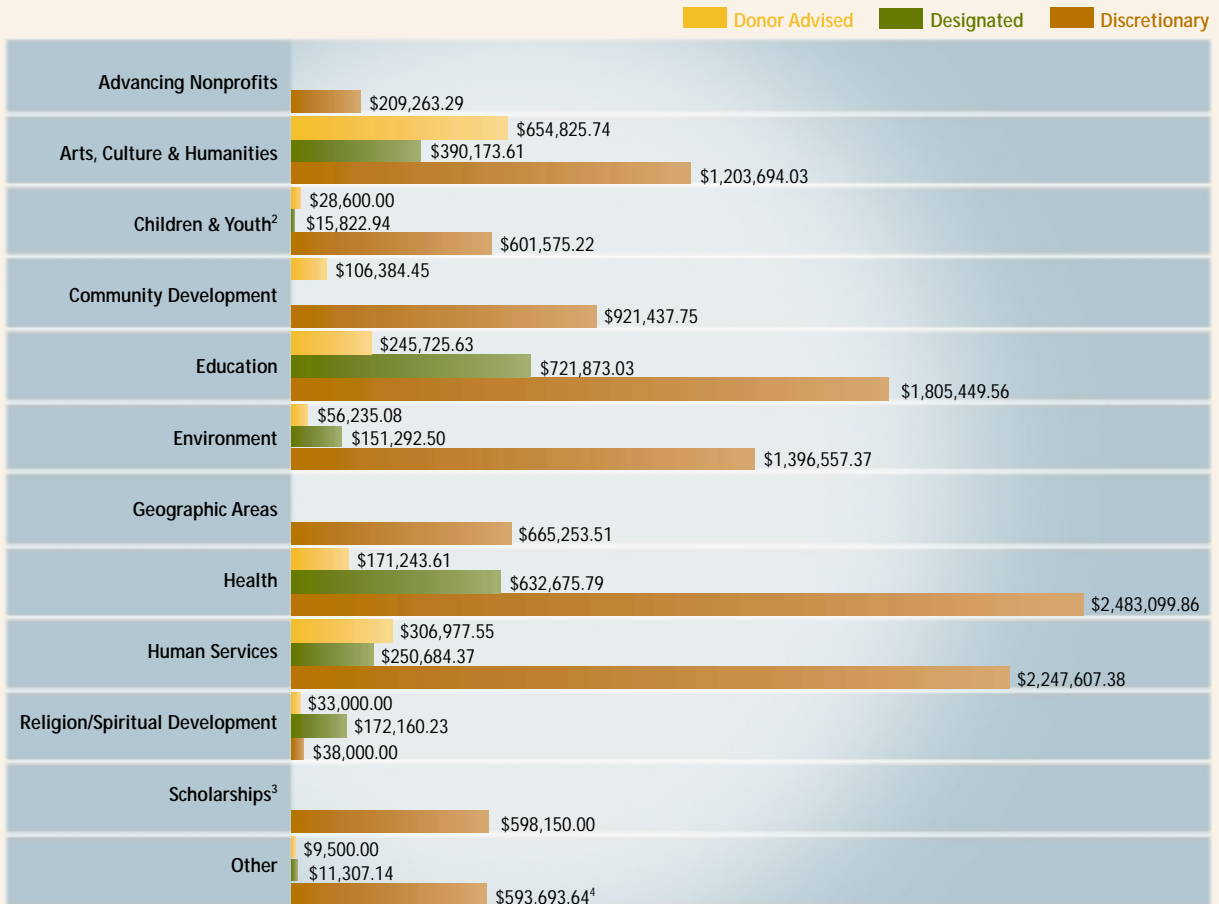
Web site

hawaiicommunityfoundation.org

Visit the Foundation's site to learn about grantmaking, services for donors and nonprofits and the latest initiatives and research activities. The site's Hawai'i Center for Giving, provides nonprofit organizations with valuable tools, including access to post events on a statewide community calendar, donation capability, and fundraising, marketing and public relations expertise.

GRANTS SUMMARY 2001

Total Hawai'i Community Foundation grants: \$16,635,223.35¹



Designated and Donor Advised grants: recommended by donors.

Discretionary grants: awarded at the discretion of the Foundation Board of Governors and advisory boards.

¹ includes \$15,932,026 from audited financial statements, plus additional grants administered on behalf of agency endowments and the Hawai'i Tobacco Prevention and Control Trust Fund.

² includes *youth development*.

³ listed in grants list as *scholarships to individuals* under education.

⁴ includes support of *social capital study, international giving, The September 11th Fund, Hawai'i Center for Giving, public policy, and philanthropy/voluntarism*.

DESIGNATED/DONOR ADVISED GRANTS

January 1 – December 31, 2001

ARTS, CULTURE & HUMANITIES

'Ahahui 'Olelo Hawai'i	\$5,000.00
Alu Like, Inc.	\$106,000.00
Andover Foundation for Archaeological Research	\$4,800.00
Barber Indexing	\$2,573.00
Bishop Museum	\$87,816.99
Chinese Catholic Club	\$10,653.21
Community Development Pacific, Inc.	\$244,000.00
Daughters of Hawai'i	\$5,000.00
Hawaiian National Bibliography Project	\$82,674.86
East Hawai'i Cultural Council	\$1,000.00
Friends of the Royal Hawaiian Band	\$817.16
Halau Mohala Ilima	\$5,000.00
Hamakua Music Festival, Inc.	\$1,000.00
Hana Cultural Center	\$1,208.85
Hawai'i International Film Festival	\$1,731.72
Hawai'i Opera Theatre	\$10,500.00
Hawai'i Public Radio	\$2,500.00
Hawai'i Public Television	\$98,082.04
Hawai'i Theatre Center	\$17,000.00
Hawaiian Mission Children's Society	\$618.09
Hawaiian Sailing Canoes Association	\$5,000.00
Henry Perrine Baldwin High School	\$2,838.48
Historic Hawai'i Foundation	\$1,000.00
Honolulu Academy of Arts	\$179,091.15
Honolulu Symphony	\$104,681.85
Honolulu Theatre for Youth	\$3,197.66
Jewish Community of Kaua'i	\$1,500.00
Kahilu Theatre Foundation	\$1,000.00
Kaua'i Concert Association	\$2,500.00
Kumu Kahua	\$500.00
Malama Na Makua A Keiki	\$3,000.00
Maui Academy of Performing Arts	\$4,472.91
Military Aviation Musuem of the Pacific	\$5,000.00
Pacific Islanders in Communications	\$1,000.00
Pamana Dance Foundation of Hawai'i	\$5,000.00
Partners in Development	\$10,000.00
Support for Arts, Culture & Humanities	\$741.38

The Contemporary Museum	\$3,500.00
The Friends of 'Iolani Palace	\$5,000.00
The Pacific Arts Foundation, Inc.	\$3,000.00
University of Hawai'i Foundation	\$10,000.00
USS Missouri Memorial Association, Inc.	\$5,000.00

TOTAL ARTS, CULTURE & HUMANITIES \$1,044,999.35

COMMUNITY DEVELOPMENT

Associated Builders and Contractors of Hawai'i Educational Trust	\$3,000.00
Support for Live Aloha Project	\$48,513.09
Hawai'i County Fire Department	\$6,954.71
Hui Malama O Ke Kai	\$30,000.00
Na Poe Hoa 'Aina	\$2,500.00
Puako Community Association	\$10,000.00
Support for Fire Fighters	\$5,416.65

TOTAL COMMUNITY DEVELOPMENT \$106,384.45

EDUCATION

Aha Punana Leo, Inc.	\$20,000.00
Aloha Community Television Foundation	\$460.44
Alternative Structures International	\$26,262.10
American Friends of New College Limited	\$40,293.48
Assets School	\$2,000.00
Bay Clinic, Inc.	\$1,000.00
Bloomsburg Area High School	\$12,833.16
Brandeis University National Women's Committee	\$2,000.00
Bucknell University	\$12,833.16
Chaminade University of Honolulu	\$2,000.00
Civic Forum on Public Schools	\$1,500.00
College of the Ozarks	\$500.00
Converse College	\$6,000.00
Culinary Institute of America	\$10,000.00
Delta Kappa Gamma	\$10,869.29
Emory University	\$6,914.20

Girl Scout Troop 81	\$537.00
Hanahaouli School	\$33,378.09
Harvard College Class Endowment Fund	\$67,155.81
Haverford College	\$1,000.00
Hawai'i Business Roundtable	\$8,291.11
Hawai'i Business Roundtable - CAPE	\$30,000.00
Hawai'i Catholic Schools	\$9,603.19
Hawai'i Pacific University	\$18,724.12
Hawai'i Preparatory Academy	\$75,976.20
Hawai'i State Library Foundation	\$3,994.72
Hui O Na Makamaka	\$5,000.00
Hui Ulu Mea 'Ai	\$1,000.00
Island School	\$2,000.00
Kalihi-Palama Health Center	\$1,000.00
Kamehameha Schools/Bishop Estate	\$4,739.91
Kaua'i Community College	\$1,500.00
Kula Kaiapuni'o Anuenue School	\$5,500.00
La Pietra	\$14,500.00
Loma Linda University	\$10,237.70
Mid-Pacific Institute	\$17,192.26
Missouri Valley College	\$10,869.29
Mohala Pua School	\$500.00
Na Kamalei - Ko'olauloa Early Education Program	\$25,000.00
'Ohana Foundation	\$45,000.00
Public Schools of Hawai'i Foundation	\$1,500.00
Punahou School	\$25,297.35
Royal Elementary School	\$2,141.49
Saint George's School	\$13,431.16
Scholarship Foundation	\$1,500.00
Scripps College	\$1,000.00
Seagull Schools, Inc.	\$1,000.00
St. Francis School	\$16,758.86
St. Louis Education Foundation	\$16,758.79
St. Raphael's Parochial School	\$1,853.00
UCLA Foundation	\$500.00
University of Akron Foundation	\$1,000.00
University of Hawai'i Foundation	\$288,927.20
University of Michigan - Law School	\$1,000.00

Education (Continued)

University of Redlands	\$17,000.00
Variety School of Hawai'i	\$24,560.56
YWCA of O'ahu	\$5,205.02

TOTAL EDUCATION **\$967,598.66**

ENVIRONMENT

ARCS Foundation, Inc. - Honolulu Chapter	\$10,627.87
Friends for Diamond Head	\$9,639.58
Environment Hawai'i	\$1,000.00
Friends of Honolulu Botanical Gardens, Inc.	\$500.00
Hawai'i Animal Sanctuary	\$1,000.00
Hawai'i Nature Center	\$10,000.00
Hawaiian Humane Society	\$45,784.55
Honolulu Zoological Society	\$2,697.66
Maui Humane Society	\$6,000.00
Missouri Botanical Garden	\$2,000.00
National Tropical Botanical Garden	\$1,000.00
Pacific Primate Sanctuary, Inc.	\$1,000.00
Save the Redwoods League	\$13,431.16
Sustainable Conservation	\$500.00
The Kaua'i Humane Society	\$3,000.00
The Nature Conservancy of Hawai'i	\$84,915.59
The Outdoor Circle	\$13,431.17
The Sylvester Foundation	\$1,000.00

TOTAL ENVIRONMENT **\$207,527.58**

HEALTH

Alzheimer's Disease and Related Disorders Association	\$5,000.00
American Cancer Society	\$54,959.59
American Cancer Society - Kaua'i	\$2,000.00
American Diabetes Association	\$12,000.00
American Heart Association, Hawai'i Affiliate	\$6,127.79
American Lung Association of Hawai'i	\$500.00
Arthritis Foundation, Inc., Hawai'i Branch	\$1,000.00

Bobby Benson Center	\$56,093.82
Cap Cure	\$5,000.00
Cystic Fibrosis Research, Inc.	\$1,000.00
Easter Seal Society of Hawai'i	\$8,707.28
Fellows of Jewish Hospital	\$1,000.00
Freedom From Hunger	\$1,014.00
Hale Makua Foundation	\$4,654.43
Hawai'i Conference of the United Church of Christ	\$2,311.15
Hawai'i Lions Eye Foundation	\$2,595.50
Hawai'i Lupus Foundation, Inc.	\$5,287.88
Hawai'i State Primary Care Association	\$15,000.00
Heifer Project International	\$681.29
Hospice Hawai'i	\$7,853.96
Jewish Center for the Aged	\$2,000.00
Juvenile Diabetes Foundation International	\$3,000.00
Kahuku Hospital	\$200.00
Kapi'olani Health Foundation	\$1,250.00
Kapi'olani Medical Center for Women & Children	\$6,609.85
Kaua'i Senior Centers, Inc.	\$25,212.38
Kona Hospital Foundation	\$94,337.39
Kuakini Foundation	\$45,000.00
Leahi Hospital	\$2,602.31
Lunalilo Home	\$6,528.84
March of Dimes Birth Defects Foundation, Pacific Chapter	\$13,787.96
Mental Health Association in Hawai'i	\$14,125.53
National Foundation For Cancer	\$5,252.40
National Institute For Mental Health	\$5,252.53
National Multiple Sclerosis Society, Hawai'i Chapter	\$1,500.00
North Hawai'i Community Hospital, Inc.	\$70,946.52
North Hawai'i Hospice, Inc.	\$5,759.79
Palolo Chinese Home	\$24,348.42
Papa Ola Lokahi	\$1,700.00
Planned Parenthood of Hawai'i	\$4,000.00
Pohai Nani	\$17,630.94

Rehabilitation Hospital of the Pacific Foundation	\$33,500.00
Shriners Hospital for Children	\$182,436.48
St. Francis Healthcare Foundation of Hawai'i	\$8,130.50
St. Francis Medical Center - West	\$796.44
St. Jude Children's Research Hospital	\$6,609.85
Straub Foundation	\$3,346.05
The Center for Neurological Reprogramming	\$2,000.00
The Pearson Foundation of Hawai'i, Inc.	\$10,653.23
The Queen's Medical Center	\$3,886.19
The Salk Institute	\$1,000.00
Wai'anae District Comprehensive Health and Hospital Board, Inc.	\$1,217.04
Waikiki Health Center	\$2,925.86
Wilcox Health Foundation	\$1,000.00
Youth of Unity	\$2,586.21
TOTAL HEALTH	\$803,919.40

HUMAN SERVICES

Aloha United Way	\$68,347.11
American Red Cross - Hawai'i Chapter	\$46,825.82
American Red Cross - National Headquarters	\$10,000.00
American Relief Everywhere, Inc.	\$4,979.91
Assistance League	\$5,000.00
Association for Retarded Citizens of Kaua'i	\$25,212.41
Catholic Charities	\$7,000.00
Child and Family Service	\$500.00
Christian Children's Fund	\$334.28
Coalition for a Drug Free Hawai'i	\$25,000.00
Compassion, Inc.	\$1,216.00
Eye of the Pacific Guide Dogs	\$4,325.85
Family Support Services of West Hawai'i	\$3,000.00
Foster Parents Plan, Inc.	\$1,824.00
Fresh Start, Inc.	\$5,000.00
Friends of the Children's Advocacy Center of O'ahu, Inc.	\$11,000.00
Friends of the Children's Advocacy Center of West Hawai'i, Inc.	\$5,000.00
Full Life	\$8,861.79
Gardenville-Afton American Legion Post	\$6,609.86
Grace Family Vineyard Foundation	\$5,000.00
Gregory House Programs	\$17,591.26
Haili Congregational Church	\$1,000.00
Hawai'i Foodbank	\$11,000.00
Hawai'i Island United Way	\$1,000.00
Hawai'i Women's Business Center	\$3,000.00
Hilo United Methodist Church	\$2,500.00
Honolulu Habitat for Humanity	\$5,000.00
IHS, The Institute for Human Services, Inc.	\$17,942.24
Make-A-Wish Foundation of America	\$10,000.00
Mama's Kitchen	\$10,000.00
National Association of REALTORS	\$10,000.00
National Federation of the Blind	\$875.39
Office for Social Ministry	\$2,500.00
Pacific Gateway Center	\$25,000.00

PARENTS	\$2,202.18
Reader's Digest Fund for the Blind, Inc.	\$500.00
Shriners Hospital for Children	\$7,502.42
The Arc in Hawai'i	\$4,325.85
The Salvation Army	\$91,037.78
The Salvation Army, Lihu'e Corps	\$2,000.00
The Salvation Army-Kona	\$16,647.77
Wai'anae Coast Coalition for Human Services	\$70,000.00
YWCA of O'ahu	\$1,000.00
TOTAL HUMAN SERVICES	\$557,661.92

OTHER

100th-442nd-MIS World War II Memorial Foundation	\$7,000.00
Association of Women Bodyboarders	\$1,731.71
Friends for Fitness	\$2,000.00
National Center For State Courts	\$9,575.43
Native Hawaiian Legal Corporation	\$500.00
TOTAL OTHER	\$20,807.14

RELIGION/SPIRITUAL DEVELOPMENT

Catholic Charities	\$15,378.51
Christian Appalachian Project	\$6,609.86
Church of the Holy Nativity	\$1,000.00
Congregation Shaare Emeth	\$2,000.00
First Christian Church	\$1,730.78
First Church of Christ Scientist, Honolulu	\$6,149.59
First Presbyterian Church of Honolulu	\$10,000.00
Kaumakapili Church	\$5,000.00
Lutheran Church of Honolulu	\$10,410.08
National Spiritual Assembly of the Bahais of the Hawaiian Islands	\$33,197.66
River of Life Mission	\$5,000.00
Roman Catholic Diocese of Honolulu	\$1,000.00
Society For the Propagation of the Faith	\$10,252.34
St. Ann's Church	\$16,758.79

St. Anthony's Church	\$16,758.79
St. Thomas Episcopal Church	\$7,000.00
Te Heparā Pai	\$2,000.00
Temple Emanu-el	\$1,536.74
The Episcopal Church in Hawai'i	\$40,293.48
The Salvation Army	\$11,507.89
Waikiki Beach Chaplaincy	\$1,575.72

TOTAL RELIGION/

SPIRITUAL DEVELOPMENT **\$205,160.23**

YOUTH DEVELOPMENT

Boy Scouts of America - Aloha Council	\$15,600.00
Boy Scouts of America - National Council	\$2,500.00
Boys & Girls Club of Hawai'i	\$16,822.94
Hawai'i State Junior Golf Association	\$1,000.00
World Scout Foundation	\$2,500.00
YMCA - Windward Branch	\$5,000.00
YMCA of Honolulu, Metropolitan Office	\$1,000.00

TOTAL YOUTH DEVELOPMENT **\$44,422.94**

GRAND TOTAL DESIGNATED/

DONOR ADVISED **\$3,958,481.67**

DISCRETIONARY GRANTS

January 1 – December 31, 2001

ADVANCING NONPROFITS

Board Development	\$17,172.25
Community Connection	\$40,000.00
Economic Impact of the Arts Study	\$11,000.00
Executive Director Study	\$7,272.39
Fund Raising Workshops with Kim Klein	\$23,212.22
Institute for Nonprofit Consulting	\$46,192.58
Nonprofit Study	\$22,135.40
The Tides Center	\$22,278.45
Volunteer Legal Services Hawai'i	\$20,000.00

TOTAL ADVANCING NONPROFITS \$209,263.29

ARTS, CULTURE & HUMANITIES

Aloha Week Hawai'i, Inc.	\$40,000.00
American String Teachers Association, Inc.	\$25,000.00
Bamboo Ridge Press	\$37,800.00
Bishop Museum	\$30,000.00
Community Development Pacific, Inc.	\$5,000.00
Dance Pioneers	\$30,000.00
Diamond Head Theatre	\$7,000.00
Ebb & Flow Arts	\$25,124.00
Friends of Moku'ula, Inc.	\$43,156.41
Grantmakers in the Arts	\$1,000.00
Hawai'i Alliance for Arts Education	\$3,000.00
Hawai'i Arts Ensemble	\$43,112.00
Hawai'i Community Television	\$1,000.00
Hawai'i Concert Society	\$30,000.00
Hawai'i Consortium for the Arts	\$6,500.00
Hawai'i Craftsmen	\$51,000.00
Hawai'i Maoli	\$5,000.00
Hawai'i Museums Association	\$10,000.00
Hawai'i Opera Theatre	\$18,700.00
Hawai'i Public Television	\$50,000.00
Hawai'i Public Television Foundation	\$40,000.00
Hawai'i Youth Symphony Association	\$2,000.00
Hawaiian Mission Children's Society	\$2,000.00
Holualoa Foundation for Arts & Culture	\$10,000.00
Honolulu Academy of Arts	\$43,300.00
Honolulu Dance Theatre, Ltd	\$10,000.00
Honolulu Printmakers	\$7,480.00
Honolulu Symphony	\$80,000.00
Honolulu Theatre for Youth	\$88,000.00
Hula Preservation Society	\$30,700.00
Kahilu Theatre Foundation	\$30,000.00
Kaua'i Children's Discovery Museum	\$20,000.00
Kona Historical Society	\$27,000.00
Lyman House Memorial Museum	\$48,170.00
Malama Na Makua A Keiki	\$3,000.00
Maui Academy of Performing Arts	\$2,000.00
Maui Arts & Cultural Center	\$98,255.00
Maui Symphony Orchestra and Festival	\$5,000.00
National Arts Stabilization Project	\$6,000.00
Nova Arts Foundation	\$35,000.00

Pacific Islanders in Communications	\$11,800.00
Polynesian Voyaging Society	\$50,000.00
The Contemporary Museum	\$49,750.00
TILT Dance Company	\$15,346.62
University of Hawai'i Foundation	\$24,500.00
Volcano Art Center	\$2,000.00

TOTAL ARTS, CULTURE & HUMANITIES \$1,203,694.03

CHILDREN & YOUTH

Bishop Museum	\$5,000.00
Boys & Girls Club of Hawai'i	\$20,000.00
Boys & Girls Club of Maui, Inc.	\$3,500.00
Boys and Girls Club of Hilo, Inc.	\$20,000.00
Clearview Christian Girls School	\$3,500.00
County of Hawai'i Prosecuting Attorney	\$2,000.00
Easter Seal Society of Hawai'i	\$7,500.00
Family Support Services of West Hawai'i	\$10,000.00
Friends of the Future	\$15,000.00
Hawai'i Advocates for Children and Youth	\$35,000.00
Hawai'i Alliance for Arts Education	\$20,000.00
Hawai'i Chapter-National Committee for Prevention of Child Abuse	\$20,000.00
Hawai'i Community Services Council	\$1,200.00
Hawai'i Island Rural Health Association, Inc.	\$9,200.00
Hawai'i Youth Services Network	\$5,000.00
Hawaiian Lifeguard Association	\$3,100.00
Hawai'i's Volcano Circus, Ltd.	\$10,000.00
Helping Hands Hawai'i	\$50,206.14
Hilo High School	\$3,300.00
Honolulu Theatre for Youth	\$16,000.00
Kaua'i Children's Discovery Museum	\$15,000.00
Legal Aid Society of Hawai'i	\$5,000.00
Maui Arts & Cultural Center	\$30,000.00
Na Kamalei - Koolauloa Early Education Program	\$15,000.00
Na Poe Hoa 'Aina	\$12,000.00
Paia Youth Council, Inc.	\$5,000.00
Parker School	\$5,000.00
Sacred Hearts Academy	\$5,000.00
Seabury Hall	\$1,000.00
Sisters Offering Support	\$20,000.00
The Island of Hawai'i YMCA	\$20,000.00
The Mediation Center of the Pacific	\$5,000.00
The Salvation Army	\$15,000.00
United States Department of Agriculture, Extension Service	\$3,000.00
Waipa Foundation	\$13,082.00
YMCA of Honolulu, Metropolitan Office	\$162,987.08
Youth for Christ USA, Inc.	\$10,000.00

TOTAL CHILDREN & YOUTH \$601,575.22

COMMUNITY DEVELOPMENT

Aloha Estates Association	\$1,800.00
Community Development Hui Of Fern Forest	\$2,000.00
Empower North Shore O'ahu	\$77,500.00
Empower O'ahu	\$1,000.00
First Nations Development Institute	\$15,000.00
Five Mountains Hawai'i	\$1,000.00
Friends for Fitness	\$2,500.00
Friends of Hale 'Ohana	\$4,900.00
Friends of Kalihi/Kamanaiki Streams	\$2,000.00
Friends of the Hana Coast, Inc.	\$306.25
Friends of the Library-Kapolei	\$3,000.00
Friends of Waimanalo Library	\$6,337.00
Friends of Waipahu Cultural Gardens Park	\$3,700.00
Garden Island Resource Conservation and Development, Inc.	\$91,000.00
Greater East Honolulu Community Alliance	\$4,000.00
Greensands Community Development Association	\$2,000.00
H.O.P.E. (Helping Other People Excel)	\$2,020.00
Hana Community Association	\$3,200.00
Hale Pauahi Tenant Association Community Development Corporation	\$7,500.00
Hawai'i Alliance for Community-Based Economic Development	\$50,000.00
Hawai'i Community Loan Fund	\$50,000.00
Hawai'i Community Services Council	\$10,000.00
Hawaiian Acres Community Association	\$1,000.00
Hawaiian Orchid Island Estates	\$1,000.00
Hawaiian Paradise Park Neighborhood Watch	\$1,000.00
Honumu Village Association	\$1,000.00
Hui Malama O Ke Kai	\$1,650.00
Ka'ahumanu Residents' Association	\$2,400.00
Kalihi Valley Homes Resident Association	\$937.50
Kamehameha Homes Tenant Association	\$2,300.00
Kau Hale O Hanakahi	\$1,000.00
Kealakehe Neighborhood Watch	\$1,500.00
Kealakekua Ranch Lots Neighborhood Watch	\$1,000.00
Kino'ole Business/Neighborhood Watch	\$500.00
Kohala Historic & Cultural Preservation Task Force	\$1,000.00
Kohala Millennium Reunion Committee	\$1,000.00
Kuhio Homes Resident Associations	\$4,585.00
Kula Ho'o Na'auao Kamepula O Nanakuli	\$1,400.00
Kula No Na Po'e Hawai'i	\$80,000.00
Kulana Nani Resident Association	\$4,362.00
KVA 'Ohana	\$7,500.00
Lanakila Community Association	\$1,300.00
Leilani Estates Neighborhood Watch	\$420.00
Lelelwi Community Association	\$1,200.00
Loi Kalo Community Watch/ Neighborhood Security Watch	\$1,605.00
Major Sheldon Wheeler Elementary School	\$3,000.00
Moanalua Gardens Community Association	\$2,000.00
Moloka'i Community Service Council	\$123,475.00
Nanakuli Neighborhood Housing Services, Inc.	\$20,000.00

Nanawale Community Patrol	\$3,000.00
Native Hawaiian Legal Corporation	\$2,500.00
North Kohala Community Voices Council	\$3,500.00
Ocean View Community Association	\$3,750.00
Orchidland Community Association, Inc.	\$3,000.00
Pa'auhau Village Community Association	\$1,500.00
Pa'auilo Community Alumni	\$2,000.00
Pa'auilo Mauka Kalopa Community Association	\$2,970.00
Pacific Gateway Center	\$87,500.00
Papakolea Community Development Corporation	\$47,500.00
The North Shore Community Land Trust	\$5,600.00
The Outdoor Circle	\$2,500.00
Under The Banyans Farmer's Market	\$1,500.00
Vacationland Hawai'i Neighborhood Watch	\$1,000.00
Wai'alea Community Association	\$8,000.00
Wai'anae Coast Coalition for Human Services	\$17,500.00
Waimanalo Hawaiian Homes Association	\$7,500.00
Waipahu Community Association	\$111,200.00
West Naauao Street Neighborhood Watch	\$520.00
TOTAL COMMUNITY DEVELOPMENT	\$921,437.75

EDUCATION

Assets School	\$12,000.00
Bay Clinic, Inc.	\$12,500.00
Civic Forum on Public Schools	\$1,500.00
Culinary Institute of America	\$2,500.00
Dept. of Education, Hawai'i District Office	\$3,500.00
Dept. of Education, Honolulu District Office	\$8,500.00
Dept. of Education, Maui District Office	\$11,000.00
Dept. of Education, Windward District	\$5,950.00
E Malama I Na Keiki O Lana'i Preschool	\$134.00
Epiphany Church and School	\$10,000.00
Family Services Center	\$15,000.00
Family Support Services of West Hawai'i	\$10,000.00
Good Beginnings Alliance	\$180,000.00
Haili Christian School	\$17,500.00
Hanahauoli School	\$5,000.00
Hanalani Schools	\$20,000.00
Harmony School Education Center	\$4,550.00
Hawai'i Alliance for Arts Education	\$24,000.00
Hawai'i Association of Independent Schools	\$310,350.00
Hawaii Business Roundtable - CAPE	\$135,000.00
Hawai'i Catholic Schools	\$31,000.00
Hawai'i Community Education Association	\$12,816.00
Hawai'i Conference of the United Church of Christ	\$75,110.00
Hawai'i Council on Economic Education	\$5,000.00
Hawai'i Literacy, Inc.	\$51,500.00
Hawai'i Speech League	\$10,000.00
Hawai'i State Library Foundation	\$56,760.00
Hawaiian Mission Elementary & Intermediate School	\$18,000.00
Holy Nativity School	\$10,000.00

Hui Malama Learning Center	\$25,000.00
Institute for Native Pacific Education and Culture	\$17,500.00
Support for Principals Initiative	\$12,750.00
Junior Achievement of Hawai'i, Inc.	\$5,000.00
Kalihi-Palama Health Center	\$1,700.00
Kama'aina Care, Inc.	\$75,000.00
Kaua'i Community College	\$1,000.00
KCAA Pre-Schools of Hawai'i	\$60,500.00
Ke Ola Mamo	\$7,500.00
Kona Christian Academy, Inc.	\$10,000.00
Les Dames d'Escoffier, Honolulu Chapter	\$2,000.00
Lutheran High School Association of Hawai'i, Inc.	\$14,000.00
Mutual Assistance Associations Center	\$20,000.00
Parents and Children Together	\$32,500.00
Punahou School	\$10,000.00
Rainbow School	\$30,000.00
Read Aloud America, Inc.	\$30,450.00
Read To Me International Foundation	\$182,100.00
Sacred Hearts Academy	\$3,000.00
Scholarships to Individuals	\$598,150.00
Seagull Schools, Inc.	\$33,000.00
Springs of Living Water	\$10,000.00
State Volunteer Services - Office of the Governor	\$5,000.00
Support for Early Childhood Education Campaign	\$12,279.56
Teachers and Students at Work for Hawai'i	\$64,500.00
The Hualalai Academy, Inc.	\$15,000.00
Trinity Presbyterian Church, Inc.	\$13,000.00
University of Hawai'i Foundation	\$40,000.00
Wai'anae Coast Early Childhood Services	\$13,500.00
TOTAL EDUCATION	\$2,403,599.56

ENVIRONMENT

Castle & Cooke Resorts, LLC	\$50,000.00
Center for a Sustainable Future, Inc.	\$25,000.00
Community Trust for Kane'ohe Bay	\$1,500.00
Conservation Leadership Workshop	\$40,924.37
Earthjustice Legal Defense Fund	\$30,000.00
Environment Hawai'i	\$20,200.00
Friends of the Future	\$15,000.00
Hawai'i Audubon Society	\$20,000.00
Hawai'i Forest Industry Association	\$25,000.00
Hawai'i Nature Center	\$24,043.00
Hawai'i Wildlife Fund	\$35,000.00
Hawaiian Silversword Foundation, Inc.	\$44,500.00
Hawai'i's Thousand Friends	\$9,410.00
Hui Malama O Mo'omomi	\$17,950.00
Hui O Laka-Koke'e Natural History Museum	\$50,000.00
Ka Makani O Kohala 'Ohana	\$20,000.00
Ka'ala Farm, Inc.	\$42,375.00
KAHEA: The Hawaiian Environmental Alliance	\$50,000.00
Kahuku Elementary School	\$1,600.00

Malama Mahaulepu	\$24,600.00
Malama o Manoa	\$10,000.00
Maui Coastal Preservation, Inc.	\$51,500.00
Maui Economic Opportunity, Inc.	\$14,700.00
Maui Tomorrow Foundation, Inc.	\$30,000.00
National Tropical Botanical Garden	\$50,000.00
Pacific Islands Land Institute	\$12,755.00
Richland Foundation	\$24,000.00
State of Hawai'i-Division of Forestry and Wildlife	\$50,000.00
The Island of Hawai'i YMCA	\$30,000.00
The Nature Conservancy of Hawai'i	\$210,000.00
The North Shore Community Land Trust	\$1,500.00
University of Hawai'i - Office of Research Services	\$330,000.00
University of Hawai'i Foundation	\$30,000.00
Zoological Society of San Diego	\$5,000.00

TOTAL ENVIRONMENT \$1,396,557.37

GEOGRAPHICAL - 'EWA BEACH

American Youth Soccer Organization - West O'ahu Region 769	\$1,000.00
Big Brothers/Big Sisters of Honolulu	\$700.00
'Ewa Beach Elementary School	\$200.00
'Ewa Beach Lions Club	\$900.00
'Ewa Beach PAL League	\$250.00
'Ewa Beach Senior Citizens Club	\$500.00
'Ewa Beach United Methodist Church	\$450.00
'Ewa Elementary School	\$2,000.00
'Ewa Hui Aloha Senior Citizen Club	\$600.00
'Ewa/'Ewa Beach PONY League	\$300.00
Friends of the 'Ewa Beach Public Library	\$960.00
Friendship Bible Church	\$500.00
Friendship Community Services Incorporated	\$1,000.00
Hawai'i Congress of Parents, Teachers, Students Association	\$1,000.00
Hawaiian Railway Society	\$870.00
Na Pua Onaona'o Ka Lei Ilima	\$1,000.00
Sabers	\$1,450.00

TOTAL GEOGRAPHICAL - 'EWA BEACH \$13,680.00

GEOGRAPHICAL - KAMUELA

Anna Perry-Fiske Charitable Foundation	\$10,000.00
Family Support Services of West Hawai'i	\$5,000.00
Five Mountains Hawai'i	\$10,000.00
Hawai'i Arts Ensemble	\$10,000.00
KALO, Inc.	\$10,000.00
The Salvation Army Waimea Corps	\$12,000.00
Waimea Outdoor Circle	\$10,000.00
Waimea Preservation Association	\$10,000.00
Waimea School Parent Teacher Student Organization	\$8,000.00

TOTAL GEOGRAPHICAL - KAMUELA \$85,000.00

GEOGRAPHICAL - KAUAI

Aha Hui E Kala	\$10,000.00
Aloha School	\$5,000.00
Boys & Girls Club of Hawai'i	\$25,000.00
Community Development Pacific, Inc.	\$2,500.00
Dance Pioneers	\$7,640.00
Friendship Club	\$8,400.00
General Conference of Seventh Day Adventists	\$10,000.00
Good Beginnings Alliance	\$25,000.00
Hawai'i Catholic Schools	\$25,000.00
Hawai'i Opera Theatre	\$2,800.00
Ho'i'ke: Kauai Community Television, Inc.	\$25,000.00
Honolulu Theatre for Youth	\$7,500.00
Hui O Laka-Koke'e Natural History Museum Island School	\$20,000.00 \$5,000.00
Kauai Center for Independent Living	\$25,000.00
Kauai Children's Discovery Museum	\$20,000.00
Kauai Historical Society	\$5,554.00
Kauai Hospice	\$10,000.00
Kauai Island Ministries, Inc.	\$1,500.00
Kauai Museum Association, Ltd.	\$20,000.00
KVMH Charitable Foundation, Inc.	\$5,000.00
Mothers Against Drunk Driving, Honolulu Chapter	\$2,500.00
Storybook Theatre of Hawai'i	\$20,000.00
The Aloha Church Assembly of God	\$3,500.00
The Kauai Food Bank, Inc.	\$10,000.00
The Koloa Early School	\$5,000.00
West Kauai Lions Club	\$1,200.00
YWCA Kauai	\$15,000.00
Zoological Society of San Diego	\$5,000.00
TOTAL GEOGRAPHICAL - KAUAI	\$328,094.00

GEOGRAPHICAL - LANAI

Aloha Festivals - Lanai	\$3,500.00
Big Brothers/Big Sisters of Maui, Inc.	\$3,040.00
Coalition for a Drug-Free Lanai	\$9,503.29
Honolulu Theatre for Youth	\$7,500.00
Hui Malama Pono O Lanai	\$2,620.00
Hui Wa'a O Lanai Cultural Club	\$6,200.00
Lanai Arts & Culture Center	\$5,600.00
Lanai Community Association	\$19,976.00
Lanai Community Basketball League	\$2,200.00
Lanai High and Elementary School	\$94,669.22
Lanai Physical Fitness Team	\$3,600.00
Lanai Senior Ukulele Group	\$3,288.00
Lanai Softball	\$2,239.00
Lanai Table Tennis Club	\$3,891.00
Support for Lanai Pool & Recreation Center	\$2,500.00
Na Pualei O Kauno'a	\$8,000.00
The North Shore Lifeguard Association	\$5,000.00
TOTAL GEOGRAPHICAL - LANAI	\$183,326.51

GEOGRAPHICAL - WEST HAWAII

American Heart Association, Hawai'i Affiliate	\$5,000.00
Assistance Dogs of Hawai'i	\$1,000.00
Child and Family Service	\$5,000.00
Family Support Services of West Hawai'i	\$6,000.00
Friends for Fitness	\$2,500.00
Friends of the Children's Advocacy Center of West Hawai'i, Inc.	\$1,000.00
Friends of the Waikoloa Park	\$800.00
Hawai'i Congress of Parents, Teachers, Students Association	\$5,000.00
Holualoa Foundation for Arts and Culture	\$953.00
Kona Association for the Performing Arts	\$2,500.00
Kona Historical Society	\$2,000.00
Kulana Huli Honua	\$600.00
Mo'okini Luakini, Inc.	\$5,000.00
Mothers Against Drunk Driving, Honolulu Chapter	\$3,500.00
Na Leo O Hualalai	\$2,500.00
Ocean View Neighborhood Watch	\$1,000.00
Office for Social Ministry	\$2,500.00
Paniolo Preservation Society	\$3,000.00
Solid Rock Ministries Assemblies of God, Inc.	\$2,800.00
The Hualalai Academy, Inc.	\$500.00
The Salvation Army	\$1,000.00
West Hawai'i Dance Theatre	\$1,000.00
TOTAL GEOGRAPHICAL - WEST HAWAII	\$55,153.00

HEALTH

Aloha Medical Mission	\$50,000.00
Alu Like, Inc.	\$10,000.00
American Heart Association, Hawai'i Affiliate	\$26,000.00
American Lung Association of Hawai'i	\$73,115.00
American Society of Post Anesthesia Nurses	\$125.90
Castle Medical Center	\$40,910.00
Catholic Charities	\$17,863.00
Child and Family Service	\$25,000.00
City and County of Honolulu, Dept. of Community & Social Resources, Elderly Affairs Division	\$5,000.00
Coalition for a Drug-Free Hawai'i	\$40,000.00
Easter Seal Society of Hawai'i	\$55,000.00
Five Mountains Hawai'i	\$35,000.00
Friends for Fitness	\$65,000.00
Friends of the Future	\$30,000.00
Friendship Club	\$40,930.00
Gay and Lesbian Community Center	\$60,000.00
Grantmakers in Health	\$2,000.00
Hale Makua	\$22,000.00
Hamakua Health Center, Inc.	\$500.00
Hana Community Health Center	\$20,000.00
Hawai'i Alliance for Community Health	\$32,270.00
Hawai'i Intergenerational Network	\$16,800.00

Hawai'i Island Adult Care, Inc.	\$35,000.00
Hawai'i Island Rural Health Association, Inc.	\$15,500.00
Hawai'i Medical Service Association Foundation	\$25,000.00
Hawai'i State Primary Care Association	\$150,000.00
Healthy Mothers, Healthy Babies Coalition of Hawai'i	\$4,000.00
Hospice of Hilo	\$4,938.00
Kalihi-Palama Health Center	\$60,000.00
Kapi'olani Health Foundation	\$19,594.00
Kapi'olani Medical Center for Women & Children	\$25,000.00
Kauai Rural Health Association	\$67,388.00
Kokua Kalihi Valley Comprehensive Family Services	\$62,500.00
Maui Economic Opportunity, Inc.	\$39,000.00
Maui Youth and Family Services, Inc.	\$30,000.00
Mental Health Association in Hawai'i	\$30,000.00
Mental Health Kokua	\$58,800.00
Moanalua Gardens Community Association	\$5,000.00
Moiiliili Community Center	\$10,000.00
Moloka'i General Hospital	\$10,000.00
Mothers Against Drunk Driving, Honolulu Chapter	\$15,000.00
North Hawai'i Community Hospital, Inc.	\$35,000.00
North Hawai'i Women and Children's Services	\$35,000.00
Pacific Health Research Institute	\$50,000.00
Papa Ola Lokahi	\$18,645.00
Research Corporation of the University of Hawai'i at Hilo	\$25,000.00
St. Francis Healthcare Foundation of Hawai'i	\$25,000.00
State of Hawai'i, Department of Health	\$33,920.00
State of Hawai'i, Executive Office on Aging	\$12,715.00
State Volunteer Services - Office of the Governor	\$5,000.00
Straub Foundation	\$53,260.00
The National Kidney Foundation of Hawai'i, Inc.	\$3,500.00
The Queen's Medical Center	\$42,500.00
The Salvation Army	\$70,000.00
University Health Care Associates	\$8,515.03
University Health Group, Inc.	\$1,000.00
University of Hawai'i - Office of Research Services	\$617,623.93
Wai'anae District Comprehensive Health and Hospital Board, Inc.	\$42,187.00
Waikiki Health Center	\$35,000.00
Waipahu High School	\$30,000.00
West Hawai'i AIDS Foundation	\$5,000.00
TOTAL HEALTH	\$2,483,099.86

HUMAN SERVICES

Alcoholic Rehabilitation Services of Hawai'i, dba Hina Mauka	\$15,000.00
Aloha House	\$29,500.00
Aloha United Way	\$52,195.00
Bay Clinic, Inc.	\$12,500.00
Big Brothers/Big Sisters of Maui, Inc.	\$25,000.00
Big Island Substance Abuse Council	\$10,000.00
Catholic Charities	\$111,500.00
Central O'ahu Senior Day Care Association, Inc.	\$32,500.00
Children's House	\$900.00
CSI, Inc.	\$3,500.00
Domestic Violence Clearinghouse & Legal Hotline	\$10,000.00
Easter Seal Society of Hawai'i	\$35,000.00
EcoRanch Hawai'i	\$15,000.00
Family Support Services of West Hawai'i	\$19,000.00
Fresh Start, Inc.	\$10,000.00
Friends of Foster Kids, Inc.	\$60,000.00
Friends of the Children's Advocacy Center of Maui, Inc.	\$11,000.00
Friends of the Children's Advocacy Center of O'ahu, Inc.	\$2,000.00
Friends of the Children's Advocacy Center of West Hawai'i, Inc.	\$2,500.00
Friends of The Maui Drug Court	\$20,000.00
Glide Memorial Methodist Church	\$4,325.00
Grants to Individuals In Need	\$69,519.75
Hale Kipa, Inc.	\$12,000.00
Hale Makua	\$10,000.00
Hawai'i Chapter-National Committee for Prevention of Child Abuse	\$15,000.00
Hawai'i County Economic Opportunity Council	\$15,000.00
Hawai'i Foodbank	\$5,500.00
Hawai'i Island Adult Care, Inc.	\$111,000.00
Hawai'i Sandplay Council	\$8,000.00
Helping Hands Hawai'i	\$135,000.00
Hilo Medical Center Home Care	\$7,500.00
Honolulu Armed Services YMCA of the USA	\$15,000.00
Honolulu Gerontology Program	\$15,000.00
Hospice Hawai'i	\$10,000.00
Hospice of Hilo	\$10,000.00
HUGS-Help, Understanding Group Support	\$8,500.00
Hui No Ke Ola Pono	\$2,000.00
IHS, The Institute for Human Services, Inc.	\$9,325.00
Imua Rehab	\$30,000.00
Institute for Native Pacific Education and Culture	\$45,000.00
Kalaeloa Surf Team	\$750.00
Kapi'olani Medical Center for Women & Children	\$50,000.00

Kaua'i Economic Opportunity, Inc.	\$37,500.00
Kona Adult Day Center	\$22,500.00
Kuakini Adult Day Care Center	\$32,500.00
Learning Disabilities Association of Hawai'i	\$17,500.00
Malama Makua	\$52,500.00
Malama Na Makua A Keiki	\$9,720.00
Maui Adult Day Care Center	\$77,500.00
Maui Economic Opportunity, Inc.	\$56,000.00
Maui Youth and Family Services, Inc.	\$12,000.00
MMC Victims Relief Fund	\$5,000.00
Moloka'i General Hospital	\$11,269.63
Office for Social Ministry	\$20,000.00
Pacific Gateway Center	\$45,000.00
Palama Settlement	\$45,000.00
Pali View Baptist Church	\$500.00
Palolo Chinese Home	\$8,000.00
Parents and Children Together	\$36,000.00
Planned Parenthood of Hawai'i	\$2,500.00
Progressive Community Treatment Service	\$20,000.00
Project Open Hand	\$2,000.00
Rehabilitation Hospital of the Pacific Foundation	\$30,000.00
Roman Catholic Diocese of Honolulu	\$34,250.00
San Francisco Food Bank	\$5,000.00
Scottish Rite Children's Center	\$22,000.00
Shriners Hospital for Children	\$150.00
Sisters of St. Francis - Hawai'i Region	\$15,000.00
Susannah Wesley Community Center	\$45,000.00
Temple Emanu-el	\$60,000.00
The Arc in Hawai'i	\$20,000.00
The Arc of Hilo	\$6,900.00
The Arc of Maui, Inc.	\$22,650.00
The Episcopal Church in Hawai'i	\$220.00
The Family Crisis Shelter, Inc.	\$55,000.00
The Maui Farm, Inc.	\$4,170.00
The Salvation Army	\$64,500.00
University of Hawai'i - Office of Research Services	\$30,000.00
Volunteer Legal Services Hawai'i	\$13,000.00
VRA, Inc.	\$20,000.00
Wai'anae Coast Comprehensive Health Center Adult Day Care	\$77,500.00
Wilcox Memorial Hospital	\$42,500.00
Windward Seniors' Day Care Center	\$30,000.00
Winners At Work	\$30,000.00
YMCA of Honolulu, Metropolitan Office	\$1,350.00
YWCA of O'ahu	\$39,913.00
TOTAL HUMAN SERVICES	\$2,247,607.38

OTHER

4Charity Investment Hui, LLC	\$230,000.00
Social Capital Study	\$18,822.89
Support for International Giving	\$22,870.75
The September 11th Fund	\$300,000.00
TOTAL OTHER	\$571,693.64

PHILANTHROPY & VOLUNTARISM

Association of Fundraising Professionals - Aloha Chapter	\$10,000.00
The Hawai'i Planned Giving Council	\$10,000.00

TOTAL PHILANTHROPY & VOLUNTARISM	\$20,000.00
---	--------------------

PUBLIC POLICY

Hawai'i Justice Foundation	\$2,000.00
TOTAL PUBLIC POLICY	\$2,000.00

RELIGION/SPIRITUAL DEVELOPMENT

Hawai'i Conference of the United Church of Christ	\$3,000.00
Hawaiian Islands Ministries	\$20,000.00
Kaumakapili Church	\$15,000.00

TOTAL RELIGION/SPIRITUAL DEVELOPMENT	\$38,000.00
---	--------------------

TOTAL	\$12,763,781.61
--------------	------------------------

ADJUSTMENTS	(\$87,039.93)
-------------	---------------

TOTAL DISCRETIONARY	\$12,676,741.68
----------------------------	------------------------

Designated/Donor Advised Discretionary	\$3,958,481.67
	\$12,676,741.68

GRAND TOTAL	\$16,635,223.35
--------------------	------------------------

STATEMENT OF ASSETS, LIABILITIES AND NET ASSETS (MODIFIED CASH BASIS)

December 31, 2001

Assets	Unrestricted	Temporarily Restricted	Total
Investments, at Fair Value (Note 3):			
Combined investment funds	\$178,751,501	\$1,118,583	\$179,870,084
Cash management funds	24,019,518	623,796	24,643,314
Common stocks	14,633,209	-	14,633,209
U.S. Treasury bonds	5,031,374	-	5,031,374
Fixed income funds	716,950	1,430,791	2,147,741
Real property held for sale	2,283,642	-	2,283,642
Total investments	<u>225,436,194</u>	<u>3,173,170</u>	<u>228,609,364</u>
Cash	98,430	-	98,430
Property, Net (Note 4)	676,152	-	676,152
Notes Receivable	153,396	-	153,396
Security Deposit and Other	96,087	-	96,087
Total assets	<u>\$226,460,259</u>	<u>\$3,173,170</u>	<u>\$229,633,429</u>
Liabilities and Net Assets			
Liabilities:			
Tobacco funds held for State of Hawai'i (Note 9)	\$22,512,337	-	\$22,512,337
Gift annuity liabilities	1,388,569	-	1,388,569
Funds held as agency endowments (Note 12)	706,116	-	706,116
Other liabilities	8,489	-	8,489
Total liabilities	<u>24,615,511</u>	<u>0</u>	<u>24,615,511</u>
Net Assets: (Note 11)			
Unrestricted	201,844,748	-	201,844,748
Temporarily restricted	-	3,173,170	3,173,170
Total net assets	<u>201,844,748</u>	<u>3,173,170</u>	<u>205,017,918</u>
Total liabilities and net assets	<u>\$226,460,259</u>	<u>\$3,173,170</u>	<u>\$229,633,429</u>
Robert E. Black Memorial Trust Assets* (Note 8)			\$35,834,000
Combined Market Value*			<u>\$265,467,429</u>

* Unaudited. These assets are not included in HCF's modified cash basis audited financial statements. The audited financial statements with accompanying notes and unqualified opinion from PricewaterhouseCoopers LLP can be examined at HCF's offices.

STATEMENT OF REVENUES AND EXPENSES AND CHANGES IN NET ASSETS (MODIFIED CASH BASIS)

For the Year Ended December 31, 2001

Revenues	Unrestricted	Temporarily Restricted	Total
Contributions (Note 2)	\$14,683,800	\$913,694	\$15,597,494
Investment return designated by payout policy, net of asset management fees	8,610,156	25	8,610,181
Income from perpetual trusts (Note 8)	2,040,712	-	2,040,712
Interest and dividends	829,528	2,095	831,623
Service and administrative fees, net (Note 10)	464,020	-	464,020
Net assets released from restrictions –			
Expiration of time restrictions	1,339,120	(1,339,120)	-
Satisfaction of program restrictions	305,195	(305,195)	-
Other	136,868	2,055	138,923
Total revenues	<u>28,409,399</u>	<u>(726,446)</u>	<u>27,682,953</u>
Expenses			
Grants	15,932,026	-	15,932,026
Program services	2,086,745	-	2,086,745
Finance and administration	1,454,565	-	1,454,565
Charitable services and donor relations	584,436	-	584,436
Total expenses	<u>20,057,772</u>	<u>-</u>	<u>20,057,772</u>
Increase (decrease) in net assets before investment return (loss) in excess of amount designated by payout policy	8,351,627	(726,446)	7,625,181
Investment Return (Loss) in Excess of Amount Designated by Payout Policy	<u>(31,403,775)</u>	<u>53,406</u>	<u>(31,350,369)</u>
Total change in net assets	<u>(23,052,148)</u>	<u>(673,040)</u>	<u>(23,725,188)</u>
Net Assets, January 1, 2001	<u>224,896,896</u>	<u>3,846,210</u>	<u>228,743,106</u>
Net Assets, December 31, 2001	<u>\$201,844,748</u>	<u>\$3,173,170</u>	<u>\$205,017,918</u>

The audited financial statements with accompanying notes and unqualified opinion from PricewaterhouseCoopers LLP can be examined at HCF's offices.

NOTES TO FINANCIAL STATEMENTS

1. Organization and Summary of Significant Accounting Policies

Hawai'i Community Foundation (the "Foundation") is a statewide public community foundation. Its mission is to help people make a difference by inspiring the spirit of giving, and by investing in people and solutions to benefit every island community. The significant accounting policies followed are described below:

Basis of Accounting

The Foundation's policy is to prepare its financial statements on the basis of cash receipts and disbursements, except that investments are carried at fair value, major property items are capitalized, noncash gifts and bequests are recorded at fair value at the date received, and changes in the fair value of investments and depreciation expense are included in the statement of revenues and expenses and changes in net assets (modified cash basis). Accordingly, the accompanying financial statements are not intended to present financial position and changes in net assets in conformity with accounting principles generally accepted in the United States of America.

Reclassifications

Certain amounts in the 2000 financial statements have been reclassified to conform to the 2001 presentation. Such reclassifications had no effect on total change in net assets as previously reported.

Use of Estimates in the Preparation of Financial Statements

The preparation of financial statements requires management to make estimates and assumptions that affect the reported amounts of assets and liabilities and disclosure of contingent assets and liabilities at the date of the financial statements and the reported amounts of revenues and expenses during the reporting period. Actual results could differ from those estimates.

Risks and Uncertainties

The Foundation invests in or holds a variety of investment vehicles, including common stock, corporate and governmental obligations, mutual funds, and real estate. These investments are exposed to interest rate, market, credit and other risks depending on the nature of

the specific investment. Accordingly, it is at least reasonably possible that these factors will result in changes in the value of the Foundation's investments, which could materially affect amounts reported in the financial statements.

Investments

Investments in fixed income funds, U.S. Treasury bonds, corporate bonds, mutual funds and common stocks are stated at fair value based on quoted market values. Investments in the cash management funds are stated at fair value, which approximates cost. The average cost method is generally used in determining gains or losses on investments sold.

Certain funds are placed in investment trust accounts called combined investment funds. The investment trust accounts are operated using the "market value unit method." Under this method, each component fund within the combined investment funds is assigned a number of units based upon the relationship of the market value of the funds' investments to all the combined investment funds' investments at the time of entry into the investment accounts. Combined investment funds earnings are allocated and distributed to participating funds based on their respective units in the accounts.

Real property held for sale is stated at estimated fair value, based on appraisals or assessed values.

Payout Policy

The Foundation adheres to a payout policy in order to preserve the growth of its endowment assets and to ensure that the Foundation has a steady and growing stream of earnings to meet community needs.

The payout that the Foundation distributes from the combined investment funds to each participating component fund for grants and expenses is calculated by multiplying a fixed percentage by a base. The fixed percentage is reviewed periodically in light of evolving trends with respect to investment returns and the rate of inflation. At December 31, 2001 and 2000, the Foundation's payout percentage factor was 5%.

The base is a 48-month rolling average unit market value of the combined investment funds, multiplied by the current number of units in the combined investment funds. Computation of the payout is made at the end of each month, and is inclusive of the last completed month.

To the extent that the payout exceeds investment income for the period, they are made from realized and/or unrealized gains.

Property

Property is stated at cost if purchased or fair value if donated at the date received. Depreciation is computed using the straight-line method over the estimated useful lives of such property, or lease term, if shorter.

Notes Receivable

Notes receivable consists of scholarship loans that are due in monthly installments with varying terms and mature upon graduation of the recipients.

Fund Management

To ensure observation of limitations and restrictions placed on the use of resources available to the Foundation, the accounts of the Foundation are managed as individual charitable funds, according to their nature and purpose. The Foundation's funds are as follows:

Operating Fund

The operating fund includes service fees, grants, contributions, and other revenues used to support the operating expenses of the Foundation.

Board Discretionary Funds

The board discretionary funds include contributions from donors who do not place any restrictions on their gifts, with the intention that the earnings be used for general charitable purposes. Principal contributions are generally invested in perpetuity under the Foundation's Declaration of Trust. The Board of Governors determines how earnings are to be distributed.

Designated, Donor Advised, and Field of Interest Funds

The designated, donor advised, and field of interest funds include contributions from donors who indicate a field of charitable endeavor to

which fund earnings are to be directed, who name specific charities to be income recipients, or who describe a group of individuals on whose behalf funds are to be expended. Principal contributions are generally invested in perpetuity under the Foundation's Declaration of Trust. Because of the Board of Governor's power to modify any restriction or condition in the distribution of funds, the amounts in these funds have been classified as unrestricted in the accompanying financial statements.

Pooled Income Fund

The pooled income fund was created to increase the endowment assets of the Foundation and to promote support to community charities. Donors contribute to the Foundation and receive income for life. Generally, at a donor's death, the residue of the gift is transferred to establish a board discretionary or designated fund, and earnings thereafter are distributed in accordance with the donor's instructions given at the time of the gift. The pooled income fund is considered temporarily restricted until, at the time of a donor's death, the funds are transferred to establish a board discretionary, designated, donor advised, or field of interest (component) fund of the Foundation.

Gift Annuities

A gift annuity is a contribution whereby the donors have contributed assets to the Foundation in exchange for the right to receive a fixed dollar annual return during their lifetime. Contribution revenue for gift annuities is recognized at the date the agreement is established, net of the liability recorded for the present value of the estimated future payments to be made to the respective donor. The present value of payments to be made to beneficiaries of gift annuities is calculated using the implicit rate of return. At December 31, 2001 and 2000, the implicit rate of return used to calculate the present value of gift annuity liabilities ranged from 5.6% to 8.2% and from 5.6% to 7.6%, respectively. The gift annuity liability is revalued annually based upon actuarially computed present values. The resulting increase in gift annuity liability is recorded as a program services expense in the accompanying statement of revenues and expenses and changes in net assets.

Classification of Net Assets

Financial statements of not-for-profit organizations measure aggregate net assets based on the absence or existence of donor-imposed restrictions. Three categories of net assets serve as the basis for the

accompanying financial statements. These classes are labeled unrestricted, temporarily restricted and permanently restricted. At December 31, 2001 and 2000, all of the Foundation's net assets were classified as either unrestricted or temporarily restricted. Brief definitions of the three net asset classes are presented below:

Unrestricted

Net assets which are free of donor-imposed restrictions; all revenues, expenses, gains and losses that are not changes in permanently or temporarily restricted net assets.

Generally accepted accounting principles provide that if the governing body of an organization has unilateral power to redirect the use of a donor's contribution to another beneficiary, or similar purpose, such contributions must be classified as unrestricted net assets. The Foundation has that ability known as variance power as promulgated in its By-Laws and described in its Gift Instruments. Accordingly, the Foundation's financial statements classify substantially all amounts as unrestricted net assets. Although these assets are classified as unrestricted, the Foundation's policies and procedures for administering its charitable funds are to always follow the donor's intent as closely as possible.

Temporarily Restricted

Net assets that include contributions and pledges whose use by the Foundation is limited by donor-imposed stipulations that either expire with the passage of time or can be fulfilled or otherwise removed by the actions of the Foundation. This classification includes income and appreciation which can be expended but for which restrictions have not yet been met. Foundation net assets that are temporarily restricted are comprised of the pooled income fund and charitable gift annuities as well as the September 11th fund, which includes contributions from donors who wished to provide aid to the victims and their families and all those affected by this disaster.

Permanently Restricted

Net assets whose use by the Foundation is limited by donor-imposed stipulations that neither expire with the passage of time or can be fulfilled or otherwise removed by the actions of the Foundation. Under this definition, the Foundation does not have any net assets within this classification.

Fair Value of Financial Instruments

Investments in common stock, U.S. Treasury and corporate bonds, cash management funds and combined investment funds are recorded at fair values as described above. For cash and other miscellaneous assets, the carrying amounts represent a reasonable estimate of the corresponding fair values. Funds held for other organizations and funds held as agency endowments are recorded at the fair values of its corresponding assets. The gift annuity liability is carried at the present value of the total future payments to annuitants and, therefore, approximates fair value.

Functional Allocation of Expenses

The costs of providing the Foundation's programs and other services have been summarized on a functional basis in the statement of revenues and expenses and changes in net assets. Accordingly, certain costs have been allocated among the programs and supporting services benefited.

Program services represents those costs associated with evaluating, recommending and monitoring applications, grants and programs. Finance and administration represents those costs associated with operational management, oversight of the Foundation's policies and procedures, and management of the Foundation's investment portfolio. Charitable services and donor relations, including fundraising costs of approximately \$183,000 and \$219,000 during the years ended December 31, 2001 and 2000, respectively, represent those costs associated with communicating and assisting the general public, along with potential and existing donors regarding the most effective ways to meet their charitable giving goals.

Income Taxes

The Foundation has received a determination from the Internal Revenue Service that its stated purpose is tax-exempt under Section 501(c)(3) of the Internal Revenue Code.

2. Contributions

Contributions for the years ended December 31, 2001 and 2000 consisted of the following:

	2001	2000
Contributions to principal	\$7,540,508	\$9,040,098
Contributions to income	<u>8,056,986</u>	<u>5,554,145</u>
	<u>\$15,597,494</u>	<u>\$14,594,243</u>

Contributions to principal are gifts intended to be invested in perpetuity. Earnings from these gifts are disbursed annually as grants to support charitable endeavors.

Contributions to income consist of gifts intended to be paid out in their entirety as charitable grants and are available for use immediately.

3. Investments

The fair value and cost of the Foundation's investments at December 31, 2001 and 2000 were as follows:

	2001		2000	
	Fair Value	Cost	Fair Value	Cost
Combined Investment Funds:				
Common stock	\$104,419,078	\$98,378,933	\$128,977,697	\$103,435,159
U.S. Treasury and other government agencies	31,669,259	30,870,465	44,447,290	43,192,100
Corporate bonds	25,664,252	25,011,886	20,645,081	20,156,753
Mutual funds	10,422,094	11,457,319	1,086,984	1,209,317
Cash management funds	6,835,401	6,835,401	8,204,915	8,204,915
Other investments	<u>860,000</u>	<u>1,260,000</u>	<u>890,000</u>	<u>1,260,000</u>
Total combined investment funds	179,870,084	173,814,004	204,251,967	177,458,244
Cash Management Funds	24,643,314	24,643,314	27,831,945	27,831,945
Common Stocks	14,633,209	14,722,829	1,278,893	204,400
U.S. Treasury Bonds	5,031,374	4,973,421	1,774,009	1,773,271
Fixed Income Funds	2,147,741	2,025,519	2,880,156	2,788,222
Real Property Held for Sale	<u>2,283,642</u>	<u>1,002,743</u>	<u>3,857,811</u>	<u>2,564,676</u>
	<u>\$228,609,364</u>	<u>\$221,181,830</u>	<u>\$241,874,781</u>	<u>\$212,620,758</u>

4. Property

Property at December 31, 2001 and 2000 consisted of the following:

	2001	2000
Equipment	\$520,399	\$441,151
Furniture and fixtures	240,788	236,250
Website development costs	206,465	–
Artwork	165,810	165,810
Property used for program purposes	110,600	110,600
Leasehold improvements	81,762	81,762
	<u>1,325,824</u>	<u>1,035,573</u>
Less accumulated depreciation and amortization	<u>649,672</u>	<u>577,224</u>
	<u>\$676,152</u>	<u>\$458,349</u>

Depreciation and amortization expense was \$81,294 and \$98,259 for the years ended December 31, 2001 and 2000, respectively.

5. Leases

As Lessee – The Foundation has several noncancelable operating leases for office space expiring at various dates through July 2004. The future minimum rental payments are as follows:

Year Ending December 31:

2002	\$198,100
2003	11,800
2004	<u>6,700</u>
	<u>\$216,600</u>

Rental expense for the years ended December 31, 2001 and 2000 was \$336,317 and \$318,086, respectively. As Lessor – The Foundation receives rental income from leases on certain real property held for sale. Such leases expire at various dates through December 2010. Future minimum rental income is as follows:

Year Ending December 31:

2002	\$72,400
2003	9,900
2004	9,100
2005	9,100
2006	9,100
Thereafter	<u>27,400</u>
	<u>\$137,000</u>

Rental income for the years ended December 31, 2001 and 2000 was \$94,376 and \$39,812, respectively.

6. Trust Services

Pacific Century Trust, a division of Bank of Hawaii, First Hawaiian Bank, and Central Pacific Bank provide asset management services to the Foundation as part of their fiduciary responsibilities as trustees. Asset management fees, consisting of all trustee, investment management and custodial fees, for the years ended December 31, 2001 and 2000 were \$938,409 and \$1,030,580, respectively, and are recorded on a net basis with income from combined investment funds in the accompanying statement of revenues and expenses and changes in net assets.

7. Pension Plan

The Foundation has a defined contribution pension plan covering all employees after they have completed one year of service. Contributions are based upon a percentage of the employees' compensation and are funded currently. Contributions to the defined contribution pension plan were approximately \$134,600 and \$101,600 for the years ended December 31, 2001 and 2000, respectively.

8. Assets Held in Trust by Others

The Foundation is a beneficiary of income from assets held in trust by other organizations. The two most significant of these trusts are the Robert E. Black Memorial Trust (the "Black Trust") and the Richard Smart Trust (the "Smart Trust"). The Foundation is an income beneficiary of 70% of the income of the Black Trust, a supporting organization of

the type described in Section 509(a)(3) of the Internal Revenue Code. At December 31, 2001, the Black Trust's assets were approximately \$51,191,000; the Foundation's 70% interest was approximately \$35,834,000. At December 31, 2000, the Black Trust's assets were approximately \$58,524,600; the Foundation's 70% interest was approximately \$40,967,200. The Foundation is also an income beneficiary of 20% of the income of the Smart Trust. At December 31, 2001, the Smart Trust's assets were approximately \$362,942,700; the Foundation's 20% interest was approximately \$72,588,500. At December 31, 2000, the Smart Trust's assets were approximately \$364,920,400; the Foundation's 20% interest was approximately \$72,984,000.

The Foundation's interests in these assets are not included in the accompanying modified cash basis financial statements. The Foundation recognized total income from perpetual trusts of \$2,040,712 and \$2,017,920 for the years ended December 31, 2001 and 2000, respectively.

9. Tobacco Prevention and Control Trust Fund

During the year ended December 31, 2000, the Foundation entered into an agreement with the State of Hawaii, Department of Health, to be the primary administrator for the Tobacco Prevention and Control Trust Fund (the "Tobacco Fund"). This task involves the selecting and supporting of programmatic initiatives aimed at delivering direct services associated with tobacco prevention and control. At December 31, 2001 and 2000, the Foundation held as agent assets of \$22,512,337 and \$12,146,831, respectively, related to the Tobacco Fund. As allowed under the agreement with the State of Hawaii, these amounts are invested in cash management funds, U.S. Treasury bonds, and domestic and international equities.

10. Service and Administrative Fees

The Foundation's operating fund receives fees from its board discretionary, designated, donor advised, and field of interest funds and from other foundations for performing certain philanthropic service and administrative functions.

Service and administrative fees for the years ended December 31, 2001 and 2000 are reflected on a net basis in the accompanying statement of revenues and expenses and changes in net assets and is comprised of the following:

	2001	2000
Total service and administrative fees	\$2,869,196	\$3,414,862
Less fees received from board discretionary, designated, donor advised, and field of interest funds	<u>2,405,176</u>	<u>2,997,383</u>
Net service and administrative fees	<u>\$464,020</u>	<u>\$417,479</u>

11. Net Assets

At December 31, 2001 and 2000, unrestricted and temporarily restricted net assets consisted of the following:

	2001	2000
Unrestricted Net Assets:		
Operating fund	\$2,269,782	\$2,590,345
Board discretionary funds	17,491,633	16,902,478
Designated, donor advised, and field of interest funds	<u>182,083,333</u>	<u>205,404,073</u>
Total unrestricted net assets	201,844,748	224,896,896
Temporarily Restricted Net Assets:		
Pooled income fund	1,450,910	2,742,463
Gift annuities	1,118,583	1,103,747
September 11th fund	<u>603,677</u>	<u>-</u>
Total temporarily restricted net assets	<u>3,173,170</u>	<u>3,846,210</u>
Total net assets	<u>\$205,017,918</u>	<u>\$228,743,106</u>

During the year ended December 31, 2001, \$1,339,120 of the Foundation's temporarily restricted net assets became unrestricted upon the death of certain gift annuitants. Also during the year ended December 31, 2001, \$305,195 of the Foundation's temporarily restricted net assets became unrestricted upon certain actions of the Foundation (e.g., disbursement of grants by the Foundation).

The following table summarizes the activity in the operating fund for the years ended December 31, 2001 and 2000:

	2001	2000
Revenues:		
Service and administrative fees	\$2,869,196	\$3,414,862
Interest and dividends	77,207	97,098
Contributions	4,665	8,656
Other	22,237	13,686
Total revenues	<u>2,973,305</u>	<u>3,534,302</u>
Expenses:		
Program services	1,661,864	1,515,449
Finance and administration	1,289,453	1,159,949
Charitable services and donor relations	585,677	567,481
Total expenses	<u>3,536,994</u>	<u>3,242,879</u>
Increase (decrease) in net assets before transfers from other funds	(563,689)	291,423
Transfers from Other Funds	<u>243,126</u>	<u>272,115</u>
Total change in net assets	(320,563)	563,538
Net Assets, Beginning of Year	<u>2,590,345</u>	<u>2,026,807</u>
Net Assets, End of Year	<u>\$2,269,782</u>	<u>\$2,590,345</u>

Transfers from other funds represent reimbursements for certain payments made by the operating fund on behalf of the Foundation's component funds, offset by the transfer of service and administrative fees incurred by the component funds.

12. Funds Held As Agency Endowments

At December 31, 2001 and 2000, the Foundation held various agency endowment funds with a combined value of \$706,116 and \$736,016, respectively. The following table summarizes the activity in such funds for the years ended December 31, 2001 and 2000:

Funds Held As Agency Endowments, January 1, 2000		\$714,813
Amounts raised		45,897
Investment income		30,962
Net depreciation of investments		(37,494)
Grants		(16,240)
Other		<u>(1,922)</u>
Funds Held As Agency Endowments, December 31, 2000		736,016
Amounts raised		63,201
Investment income		34,856
Net depreciation of investments		(145,647)
Grants		(23,197)
Other		<u>40,887</u>
Funds Held As Agency Endowments, December 31, 2001		<u>\$706,116</u>

CORPORATE TRUSTEES

Hawai'i Community Foundation works closely with its corporate trustees to carry out its mission.

While the Foundation is responsible for the administration of the funds under its care, the actual safekeeping of assets and investment management are done by its corporate trustees under the oversight of the Foundation's Board of Governors.

 **Bank of Hawaii**

Investment Services Group

 **First Hawaiian Bank**

 **Central Pacific Bank**
Member FDIC

HAWAI'I COMMUNITY FOUNDATION STAFF

Robert Abad	<i>Accounting Assistant</i>	Paula Nagao	<i>Executive Assistant to the President & CEO</i>
Michelle Abe	<i>Accounting Administrator</i>	Clarysse Kami Nunokawa	<i>Program Officer for Health</i>
Michael Casey	<i>Program Officer for Human Services</i>	Anita Owens	<i>Administrative Assistant/Private Foundations</i>
Diane U. Chadwick	<i>Foundation Officer for Hawai'i Island</i>	Luis Pascual, Jr.	<i>Systems Administrator</i>
Sally Chang	<i>Volunteer</i>	Lissa Schiff	<i>Private Foundation Services Officer</i>
Jen Clifford	<i>Administrative Assistant/Finance</i>	Janet Smith	<i>Grants Manager</i>
Aarin Correa	<i>Senior Program Assistant/ Natural Resources Conservation</i>	Colleen Sotomura	<i>Vice President/Marketing</i>
Janet Cutting	<i>Funds Administrative Officer</i>	Christine Sunada	<i>Grants Manager</i>
L. Chips DaMate	<i>Senior Program Assistant/Culture & Arts, Mentoring & Media</i>	Susan Tagawa	<i>Organizational Development & Human Resources Manager</i>
Tanya Diaz	<i>Accountant</i>	Kelvin H. Taketa	<i>President & CEO</i>
Susie Dorian	<i>Administrative Assistant/Hawai'i Island</i>	Lorraine Sato Tamaribuchi	<i>Foundation Officer for Maui County</i>
Jaedine Ehia	<i>Senior Scholarship Assistant</i>	William Trugillo	<i>Senior Foundation Assistant/Kaua'i</i>
Jill Engledow	<i>Senior Foundation Assistant/Maui County</i>	Juliette M. Tulang	<i>Foundation Associate for Hawai'i Island</i>
Roella Foronda	<i>Senior Program Assistant/Health & Human Services</i>	JoAnne Valverde	<i>Receptionist/Office Assistant</i>
Lynn Montague Haff	<i>Donor Services Officer</i>	Kimberly Vierra	<i>Communications Officer</i>
Ken Hasegawa	<i>Scholarship Associate</i>	Joanne Watase-Yang	<i>Executive Assistant/Marketing</i>
Reed Hisamoto	<i>Donor Services Associate</i>	Mary Pat Waterhouse	<i>Vice President/Chief Financial & Administrative Officer</i>
Kalei Kaha'ulelio	<i>Scholarship Officer</i>	Anne Weyden	<i>Charitable Planning Assistant</i>
Cheryl Kaneshiro	<i>Senior Program Assistant/Education & Organizational Effectiveness</i>	Karen White	<i>Volunteer</i>
Teri-Ann Kauina	<i>Executive Assistant/Programs</i>	Christine van Bergeijk	<i>Vice President/Programs</i>
Kaleinani Larsen	<i>Foundation Officer for Kaua'i</i>	Joanne Yamada	<i>Fellow</i>
Katharine P. Lloyd	<i>General Counsel/Charitable Planning Director</i>		
Amy Luersen	<i>Program Officer for Education & Community Building</i>		
Donna Loo	<i>Funds Administrative Assistant</i>		
Karen Masaki	<i>Program Officer for Culture & Arts</i>		
Pi'ikea Miller	<i>Program Officer for Natural Resources Conservation</i>		

PHOTO CREDITS:

Hanalani School, page 2
 David Murphey Photography
 Gary Hofheimer Photography
 Charlie King photo, page 9, Lew Harrington
 Mural art, page 19, John Merrifield
 Pū'olo Lā'i, page 24, Floral Network by Debbi



HAWAII COMMUNITY
FOUNDATION

1164 Bishop Street, Suite 800
Honolulu, Hawai'i 96813
Tel: 808.537.6333
Fax: 808.521.6286

Neighbor Islands call Toll-free:
1.888.731.3863

Neighbor Island Offices:
Kaua'i: 808.245.4585 *Toll-free:* 1.866.245.4585
Maui: 808.242.6184
Hawai'i Island: 808.885.2174

Web site:
hawaiicommunityfoundation.org