



# Change

MAKERS



HAWAII COMMUNITY  
FOUNDATION



# Contents

- 2 A Message to Our Friends and Partners
- 4 2008 Board of Governors
- 6 2008 Neighbor Island Leadership Councils

## Change Makers

- 8 Initiating Change: **The Hawai'i Community Foundation's Natural Resources Conservation Program**
- 10 Future Change Maker: **Julie Barshaw**
- 12 Change by Example: **Teach for America—Hawai'i**
- 14 Change for Sustainability: **MA'O Organic Farms**
- 16 Faith in Change: **Project Dana**
  
- 18 Total Grants Invested in the Community in 2007
- 19 Advancing the Nonprofit Sector
- 21 Giving Options
- 23 Legacy Society
- 24 2007 Donors
- 28 2007 Charitable Funds
- 34 2007 Volunteer Advisory Committees and Boards
- 36 Statements of Assets, Liabilities and Net Assets
- 37 Statements of Revenues and Expenses and Changes in Net Assets
- 38 Staff List
- 39 Stewards of the Community



A person stands on a dark, rocky cliff on the left side of the frame, looking out over a vast ocean. The sky is filled with soft, orange-hued clouds, suggesting a sunset or sunrise. The overall color palette is a warm, monochromatic orange.

# OUR Mission

Hawai'i Community Foundation

*helps people* make a difference

by inspiring *the spirit of giving*

and by investing *in people and solutions*

*to benefit* every island community.



# A Message

## TO OUR FRIENDS AND PARTNERS

### CHANGE MAKERS

Whenever opportunity lets us see our familiar world from a different perspective, it gives us reason to reflect on things we so often take for granted. And that's why the cover photo from kama'aina photographer John De Mello was selected this year.

John captured this Big Island lava flow at Wilipea in 2002. John says when shooting landscapes he doesn't always have a plan in mind but instead finds inspiration in shooting whatever he finds. On this shot, he flew into Kona on the last flight, drove through the night to get to the end of Chain of Craters Road, and napped in the car until just before sunrise to hike to this spot. His dedication and passion for the perfect shot is reflected in this photo, which we think captures the theme of this year's Annual Report, Change Makers.

Like John's dedication to his profession, the people highlighted in this year's Annual Report are dedicated to making our Hawai'i community a better place for all. We are privileged to work with people like Larry and Joyce Stupski, Gary and Kukui Maunakea-Forth, Rose Nakamura and Julie Barshaw whose commitment and generosity are exceeded only by their passion to helping others succeed.

They are change makers, like the hundreds of other clients and donors of the Hawai'i Community Foundation and the staff and volunteers of the many organizations we work with each year. Our success depends on providing a vital link between caring donors and programs that arch from island to island, from cities and small towns, where needs and opportunities might otherwise go unnoticed.

*Our success depends on providing a vital link between caring donors and community programs...where needs and opportunities might otherwise go unnoticed.*

### 2007—A YEAR IN REVIEW

In an effort to ensure that the Foundation continues to provide philanthropic leadership and generate positive change, our Board and staff concluded a review and refinement of our strategies in the first half of 2007. We reaffirmed the fundamental principle that the Foundation seek to increase philanthropic investments for the community, not the Foundation. We see our role as helping people find their passion and meaning in giving and helping them be effective and efficient givers. We remain committed to being partners with our grantees, to listen to their views and to provide the platform

for sharing and support along with opportunities for collaboration.

As the year progressed, it proved to be remarkable in several respects. First, we launched the Youth Matters initiative focused on building a network of frontline organizations that are working to help at-risk kids navigate through adolescence and young adulthood to become successful, contributing members of our society. We are delighted to be working with 20 organizations statewide through a \$5 million partnership with the W.K. Kellogg Foundation. Along with our





organizational capacity building and leadership development work, this initiative is a great example of how the Foundation works to build trust and shared learning with our funders and organizational partners.

On behalf of our clients and donors, we administered approximately \$36.5 million in investments into our community, our highest amount ever, thanks to dramatic growth in our scholarship programs and the addition of several new private foundation clients and donor advised funds. We also helped to facilitate over \$10 million in grants to organizations that were not administered by us; in those cases, we helped identify appropriate grantees for other grant makers or helped to encourage investments in local organizations directly.

In 2007, we received over \$33 million, including the highest number of substantial gifts from our existing clients and donors we have ever received.

Over the past few years, we worked very hard to increase our standards of service and we are most proud of this response as it demonstrates a high level of satisfaction with our services and a deepening engagement in philanthropy by our clients and donors.

We also bid goodbye to two of our most active and longstanding Governors, Bob Bean and Gene Bal. Serving as our Board Chair and the Chair of our Maui Leadership Council respectively, Bob and Gene were leaders in our efforts to provide better philanthropic services and remain great ambassadors for the Foundation. We are also pleased to welcome Micah Kane and Honey Bun Haynes to our Board.

### **A BOLD CREATION**

As we look around and reflect on the year, change is in the air. Shifting demographics, a slowing global and local economy, technological advances

and environmental concerns all guarantee that the Hawai'i we know or have known will not be the Hawai'i of the future. Change is inevitable.

But philanthropy, as expressed by the generosity and optimism of those who give and those who lead, can ensure that change is not something that happens to us, but is something we create. As change makers, we thank you for your part in its creation.

Sincerely,

Barry K. Taniguchi,  
Chairman of the Board

Kelvin H. Taketa,  
President & CEO



# Board of Governors

## 2008

The Board of Governors establishes policy, sets organization-wide priorities and program strategies, and ensures that the financial stewardship and operations of the Foundation are conducted with integrity and accountability.

*The Foundation bid aloha in 2007 to Governors Robert R. Bean and Eugene Bal, III. We value their contributions to the Foundation and to Hawai'i.*



**Barry K. Taniguchi, Chairman**  
President & CEO  
KTA Super Stores



**Paul Kosasa, Vice Chair**  
President & CEO  
ABC Stores



**Jean F. Cornuelle, Secretary**  
Community Volunteer

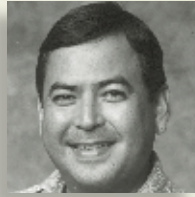


**Laurie T. Ainslie, Treasurer**  
Community Volunteer





**Claire L. Asam, Ph.D.**  
Trustee  
Queen Lili'uokalani Trust



**Gary Caulfield**  
Vice Chairman  
First Hawaiian Bank



**Maggie B. Cole**  
Community Volunteer



**Samuel A. Cooke**  
Senior Vice President (Retired)  
Morgan Stanley Dean Witter



**Anthony R. Guerrero, Jr.**  
Vice Chairman  
First Hawaiian Bank



**Richard W. Gushman, II**  
President  
DGM Group, Inc.



**Honey Bun Haynes**  
Community Volunteer



**Peter S. Ho**  
President  
Bank of Hawai'i



**Lawrence M. Johnson**  
Chairman of the Board of  
Directors & CEO (Retired)  
Bank of Hawai'i



**Micah A. Kane**  
Chairman  
Hawaiian Homes Commission



**Charlie King**  
President  
King Auto Group



**Cathy Luke**  
President  
Loyalty Enterprises, Ltd.



**David Nakada**  
Executive Director  
Boys & Girls Club of Hawai'i



**Jennifer Sabas**  
Chief of Staff, Hawai'i Operations  
The Office of U.S. Senator  
Daniel K. Inouye



**Lawrence Stupski**  
Chairman  
Stupski Foundation



**Eric K. Yeaman**  
President & CEO  
Hawaiian Telcom



# Neighbor Island Leadership Councils

2008

Leadership Councils help neighbor island staff to further the Foundation's mission. These community-minded volunteers open doors to form new partnerships and provide advice on issues relevant to their respective islands.

## MAUI

Maggie B. Cole, *Chair*  
Gilbert Keith-Agaran  
Eugene Bal, III  
Julie Ford  
Honey Bun Haynes  
Patrick L. Ing  
Alec McBarnet  
Mino McLean  
Lois E. Reiswig  
Pamela Tsutsui  
Leona Rocha Wilson  
John C. Baldwin,  
*Emeritus Member*  
Sam S. Kadotani,  
*Emeritus Member*  
B. Martin Luna,  
*Emeritus Member*  
Howard Nakamura,  
*Emeritus Member*  
William C.N. Wong,  
*Emeritus Member*

## KAUA'I

Charlie King, *Chair*  
Nancy J. Budd, Esq.  
Roberta Wallace Cable  
Nancy S. Goodale  
Warren H. Haruki  
Lynn P. McCrory, RRP  
Glen H. Takenouchi  
Millicent L. Wellington  
Reverend Jan C. Rudinoff,  
*Emeritus Member*

## HAWAII ISLAND

Laurie T. Ainslie, *Chair*  
Roberta Chu  
John De Fries  
Darl C. Gleed  
Robert W. Hastings, II  
Lynn Lally  
Margaret K. Masunaga  
Barry K. Taniguchi  
Thomas P. Whittemore



A person is silhouetted against a bright sky, standing on the edge of a dark, rocky cliff. They are looking out over a vast, calm ocean that stretches to the horizon. The sky is filled with soft, white clouds. The overall mood is contemplative and serene.

# Vision

## STATEMENT

We want to live in a Hawai‘i  
where people care about each other,  
our natural resources  
and diverse island cultures...  
a place where people’s ideas,  
initiative and generosity  
support thriving,  
responsible communities.



*“Much of our work is focused on building community capacity to manage these areas, because we know that lasting success depends on their ability to care for these important places.”*

Kim Hum, Marine Program Director, The Nature Conservancy of Hawai‘i



KANAKO UCHINO

# Initiating Change

## Hawai‘i Community Foundation’s Natural Resources Conservation Program—**Marine Conservation**

**P**ART OF THE HAWAII COMMUNITY FOUNDATION’S MISSION includes “investing in people and solutions to benefit every island community,” and in 1999, the Foundation realized that protection of Hawai‘i’s marine ecosystems would significantly benefit island communities from Hilo to Hanalei.

The Natural Resources Conservation Program (NRC) began with terrestrial grantmaking and in 2001 moved into marine grantmaking. From a single initiative backed by the Foundation, the effort has spawned numerous offshoots to protect Hawai‘i’s fragile marine ecosystems.

Because of the fragility of Hawai‘i’s natural resources, the long-term health of the state’s marine ecosystems could only be protected through active management and sustainable use. During the launch of NRC, the Foundation completed an assessment of the threats to nearshore marine ecosystems.

“What amazed us was that people representing communities, government, nonprofits and academia—groups who weren’t working together—all were in agreement about the threats to the marine environment,” says Pi‘ikea Miller, senior program officer for discretionary programs at the Hawai‘i Community Foundation.





Divers removing algae with Super Sucker

“(Managing Better Together Learning Network is) a project that brought together community marine practitioners to work toward improving their practice through sharing lessons and strategies.”

Debbie Gowensmith, Hawai‘i program director for CCN

The Packard and Hewlett Foundations began initial funding of the NRC Program. The Hawai‘i Community Foundation was the ideal organization to evaluate and monitor environmental grantmaking locally for these national grantors.

In 2002, strategic grantmaking went into full force and the field was being built around marine conservation. Organizations such as The Nature Conservancy of Hawai‘i (TNCH), began to mobilize their own marine initiatives with the support of the NRC Program. “The Foundation was one of the first supporters of TNCH’s new marine conservation program,” says Kim Hum, marine program director for TNCH. In addition to supporting TNCH’s marine program, the Foundation gave them a grant to develop the Super Sucker, an underwater vacuum used to remove invasive algae and save coral reefs around the state.

TNCH’s marine program has made significant progress over the past few years by developing a clear vision for successful marine preservation in

Hawai‘i. “Much of our work is to focus on building community capacity to manage these areas, because we know that lasting success depends on their ability to care for these important places,” explains Kim.

Hawai‘i Community Foundation also supported The Community Conservation Network (CCN) to assist communities to develop the capacity needed for long-term stewardship of marine resources. “The Foundation agreed to support CCN’s nascent Hawai‘i Program, especially the Managing Better Together Learning Network, a project that brought together community marine practitioners to work toward improving their practice through sharing lessons and strategies,” says Debbie Gowensmith, Hawai‘i program director for CCN.

As a direct result of Foundation funding, CCN’s Managing Better Together Learning Network has grown from 12 participating communities to 22 since its inception in 2003. “With communities’ presence and involvement, nearshore

fisheries and the reef habitats they depend upon are being protected,” Debbie adds.

Most recently, the Foundation supported the development of a new biological monitoring program designed to measure the effectiveness of the community-based management efforts of TNC, CCN and the Hawai‘i Wildlife Fund, another organization dedicated to Hawai‘i’s native wildlife. “While this project is just getting started, we expect that it will provide us all with the information we need to better understand the effects of community-based management on nearshore reef resources,” Kim says.



Ali‘i Fishpond building project

The Hawai‘i Community Foundation’s NRC Program has made numerous grants to develop organizational capacity of environmental nonprofits. While the NRC Program is primarily funded through a partnership with donor advised funds and other private clients along with a \$1 million endowment, the Foundation hopes to build on these past successes and encourage other clients and philanthropists to join in this effort. The challenges are great, but so are the opportunities.



Sharing traditional knowledge of marine resource stewardship.



*“We are here because we wish to be change makers. We strive to better equip ourselves through education so that we might contribute more significantly through our resources and experiences to the larger community.”*

Remarks by Julie at the Hawai'i Community Foundation's reception for scholarship donors and recipients held on July 28, 2007

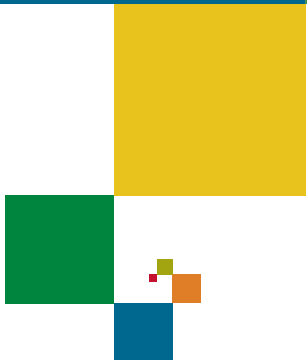


# Future Change

**Julie**



**Barshaw**





**A**S A LOCAL GIRL living in British Columbia, Canada, Julie Barshaw embraces her past so she can move on with her future. Change is a word that she learned to perfect with grace and success.



Julie's history as a foster child has led her on a personal voyage that most people never experience in a lifetime. "These experiences led me on a journey to understand concepts such as identity, worth, suffering, and redemption," she says

# Maker

A part of the foster care system until the age of four, Julie was adopted by her current family. Through her childhood experiences, she learned the meaning of compassion and personal growth. Both go hand in hand, according to Julie. Without one and the other, one cannot change the world.

Julie has been a scholarship recipient of the Hawai'i Community Foundation for six years and has received over 15 scholarships. She is one of over 10,000 scholarship recipients who received grants from the Foundation in the past 14 years to pursue their post-secondary education. The Foundation is a steward of 150 scholarship funds with \$5 million being distributed every year.

In 2007, she spoke at the Foundation's annual Scholarship Recognition Reception. It was in this speech that the idiom "change maker" was first shared. "I chose the term 'Change Makers' as a title to be synonymous with the word 'intentionality,'" Julie explains. If convictions are never acted on then people fail to reach their full potential. Intentionality is necessary for change to occur, according to her.

Many of the Foundation's scholarship recipients come from unique backgrounds and different life

situations. However, one common goal for each is to enrich their forecast for success, starting with a college education. With Julie, she is open in discussing her past and believes that her past has helped shape her future. "Never be ashamed of what you discover when you genuinely find yourself and who you are. Appreciate what has shaped you and use the opportunity of higher education to pursue whatever unique purpose you find for yourself," Julie adds.

Currently, Julie lives and studies in Canada. She is a student at the Associated Canadian Theological Schools (ACTS) Seminary of Trinity Western University and is pursuing her master's degree in Cross-Cultural Ministries. Hoping to pursue a career in international child welfare, Julie believes this field is where her heart and passion resides. "These scholarships have truly changed my life by impressing a faith in and for me—and in effect, shaped my character to continue to strive for excellence."



"These experiences (growing up as a foster child) led me on a journey to understand concepts such as identity, worth, suffering, and redemption."



# Change



BRAD GODA PHOTOGRAPHY

## by Example

**Teach for America—Hawai‘i**

TFA teachers from Campbell High School with  
TFA Executive Director: (l-r) Shayna Langsner,  
Tyler Hollett, Jessie Stone, Ethan Lin, Jill Baldemor,  
Meilan Akaka, Thomas Bush, Peifan Hu





“...education gives you such opportunity yet so many people don’t have that opportunity.”

Jill Baldemor, TFA Hawaii Executive Director

**E**DUKATION is the ultimate change agent. Yet, educational excellence has become an elusive target.

Larry and Joyce Stupski truly believe their education has benefited them so much that they’ve dedicated their philanthropy to partnering with education leaders to produce life-changing results for all students.

The Stupskis, along with operating their own private foundation, are major supporters of Teach for America (TFA), a national organization working to eliminate educational inequity in the country’s highest-poverty communities by recruiting promising college graduates in the effort.

“There are so many circumstances of inequity and injustice that play themselves out in the realm of education... Trying to do our part in righting the wrong is very important to us.”

Larry Stupski

Larry Stupski, who serves on the Board for the Hawai‘i Community Foundation, has been involved with TFA since 1998 as a donor and as a board member. His wife Joyce is a teacher by training and spent 14 years educating the very population of kids that TFA is targeting. “There are so many circumstances of inequity and injustice that play themselves out in

the realm of education,” says Larry. “Trying to do our part in righting the wrong is very important to us.”

In 2005, TFA was looking to expand. “I knew at the national level that they wanted to expand and I told them to give Hawai‘i a look,” Larry admits. Hawai‘i is the home to a public school system that ranks 44th in the nation in terms of academic achievement.

As part-time residents of the islands, the Stupskis felt that many kids could benefit from having the educational opportunities they deserve. With the help of other partners, including the Hawai‘i Community Foundation, the effort to bring TFA to the state quickly gained momentum.

As one of the original funders of TFA Hawai‘i, along with the Stupskis, the Foundation encouraged multiple donor advised funds to support programs such as *Sponsor A Teacher*. This program allows individual donors to sponsor a teacher and help with their development and transition to living in Hawai‘i. The Foundation also hosted a reception for TFA’s CEO and Founder, Wendy Kopp, to help connect TFA with local foundations and local business leaders, all of whom are supporting the program today.

Now in its third year in the state, TFA Hawai‘i has 63 new teachers plus 44 who are returning for their second year and a solid alumni corps still involved in education in Hawai‘i. Its new executive director, Jill Baldemor,



ISLAND STYLE IMAGES

Joyce & Larry Stupski

is a former teacher of TFA, who has seen first-hand that the program works.

Being afforded a privileged education while growing up, Jill felt a deep responsibility to give back to students and join in on the cause. “I just felt like education gives you such opportunity yet so many people don’t have that opportunity,” Jill says. “Our main goal is to close the achievement gap between kids who grow up in lower income neighborhoods and the kids who can afford to go to better schools.”

As for the Stupskis, they will continue to support TFA because of the mission and people who help make it all possible. “Even though we’re part-time residents in Hawai‘i, we don’t see this as a part-time commitment,” says Joyce.



*“We are re-creating a better home in which we will all live and thrive.”*

Kukui Maunakea-Forth



Gary and Kukui Maunakea-Forth, founders of MA'O Organic Farms

# MA'O Organic Farms for **Change** Sustain





**T**HE DRIVE up to MA'O Organic Farms in Wai'anae is refreshing. As you drive deeper into the valley, the smell of greenery overwhelms you, chills run down your spine, and you can hear the sound of calm hovering above. This kind of isolation is welcoming at the farm. It's the conversation between the land and the hands of its inhabitants that make the most noise.

The farm was co-founded by Gary and Kukui Maunakea-Forth in 2001 as the MA'O Community Food Security Initiative. The goals were to address five critical issues in the Wai'anae community: youth who dropped out of school; sustainable economic development; agriculture; health; and Hawaiian culture. Today, the farm operates as a 5-acre USDA-certified organic farm, a youth training program, and an organic agricultural center.

Gary works as the Farm Manager and Kukui serves as the Executive Director of the nonprofit umbrella of the MA'O Initiative, the Wai'anae Community Re-Development Corporation (WCRC). "We really do draw off of one another's strengths, creating a great wealth and resource around the idea of how to make positive systemic change for the overall social, economic and environmental justice of our home community," says Kukui.

Through *'aina* (land)-based activities MA'O's goal is to re-establish their community as a nurturing environment beginning with the youth and their families. Wai'anae was once a bustling, self-sufficient community of Hawaiians who grew their own food and lived off the land. Gary and Kukui have made it their life's work in trying to re-establish this lifestyle.

One of the major facets of the farm is its youth development program. MA'O believes in "growing youth" or cultivating the next generation of Wai'anae children, intermediate to college-aged. "If we can make it through college, learn our culture and learn organic farming, we have the *kuleana* (responsibility) to teach others what we've gained," said Makana Lopez, a college intern.

With a lot of missed opportunities for kids in Wai'anae to learn about leadership, Hawaiian culture, communication, and agriculture, MA'O teaches them to be leaders while growing fresh produce for the community. "To work and live in Wai'anae means that like the generations before me, I'm giving back to my community," said Hilda Taulava, a student farmer. "It is 'we' who should and can change the negative thoughts that challenge us to be successful and knowledgeable in the future."

With help from the Pierre and Pamela Omidyar Fund of the Hawai'i Community Foundation, MA'O is able to expand their operations and increase earned revenue to put them on a more sustainable path. This included obtaining more land to expand the farm tripling its current size. "Our organization has benefited from the depth and breadth of the Foundation's

mentorship and expertise," Kukui explains. "Also crucial to our development has been the connection to visionaries facilitated by the Foundation and other like-minded organizations, at a local level as well as the national level."

The Foundation helped to cultivate what is now a two-year relationship between the Maunakea-Forths and the Omidyars, which can be compared to more than just a connection through funding, but a mutual understanding of how a small farming venture can scale up to be a deeper, social cause in the community. "At a deeper level this means they understand why we'd use our cultural values of aloha *'aina* as the building block of community development," says Gary. "We feel like they believe in us, and we feel a deeper commitment and greater enthusiasm for our work."

The Maunakea-Forths are also 2007 Ho'okele Award recipients of the Hawai'i Community Foundation. Yet this couple is hardly the type to boast about being recognized for their work. It's because of their own family that they are reminded of why they do what they do. "Our work is to create a Wai'anae that our children and grandchildren will want to return to, a place they can call home," Kukui says. And deep in that valley is where their heart is. At home in Wai'anae.



# ability



*“Care is everybody’s business. My parents always said to love thy neighbor and extend your hands.”*

Rose Nakamura

BRAD GODA PHOTOGRAPHY



# Faith in Project Dana Change

Project Dana staff: (l-r) Harriet Ito,  
Helene Uyemura, Rose Nakamura,  
Roy Masuda, Cyndi Osajima, Mike Hirano



**T**HE CALMING BLUE EXTERIOR of the house in Mo'ili'ili is perfect for the mood within. This humble environment was once the home of an elderly woman who lived alone. Today, the staff of Project Dana works out of that home helping elders in need, just like the home's former owner.



The mission of the program is indescribable in just words. If you meet Rose Nakamura, administrator and co-founder of Project Dana, you can see how she works graciously with her staff to provide help to Hawai'i's *kūpuna* (elders). This kind of care is increasingly becoming essential among Hawai'i families.

"Care is everybody's business," says Rose. As a young girl growing up in Hilo, she can recall the teachings of her parents and the compassionate lives they led. For instance, in the 1960 Hilo tsunami, her parents lost their home. Still, they continued to

help other neighbors who were affected by the tidal wave. "My parents always said to love thy neighbor and extend your hands," Rose continues.

Because of her valued efforts Rose received a 2007 Ho'okele Award from the Hawai'i Community Foundation. She was nominated and selected for the award, which is a monetary gift to be used toward personal renewal and professional development. In turn, Rose was able to visit Japan for an exchange program on Volunteerism and Aging Societies. "I returned to Hawai'i with renewed energy and appreciation of the mission of Project Dana," she says.

In 2009, Project Dana will celebrate its 20th anniversary. Founded in 1989, the program launched to provide a variety of services to the frail, elderly and disabled. Guided by the Buddhist principle of Dana, a Sanskrit word meaning selfless giving, Project Dana continues today because of its volunteers.

"The volunteers become friends to the people they take care of," Rose explains. Whether it is taking an elder grocery shopping or to assist in small modifications to a home, the volunteers are well-trained to provide any type of requested care. With over 750 volunteers and a partnership with over 30 churches and temples across Hawai'i, the program has grown into a respected volunteer-driven support program for the elders.

By the year 2020, 25 percent of Hawai'i's population will be 65 years and older. Hawai'i

also leads the nation in longevity and has a two to three times more rapid senior growth rate than any state in the nation. With staggering statistics such as these, Project Dana is a blessing finally coming into fruition.

Although many people in Hawai'i believe that it is their *kuleana* (responsibility) and privilege to take care of their *kūpuna*, a significant percentage of elders continue to live alone. "Although most elders live alone, they want to enjoy living independently and with dignity," says Rose.

As an interfaith effort, Project Dana puts faith into action. "Compassion. Love. Caring. These are very basic values that in a world such as ours, where bad things happen all the time, what we are promoting is peace within ourselves, and to pass on compassion," Rose believes. "Truly, my passion is selfless giving." Rose is the ultimate form of giving in the flesh. Her work with Project Dana is all voluntary.



PHOTOS BY BRAD GODA PHOTOGRAPHY



# Total Grants Invested in the Community in 2007

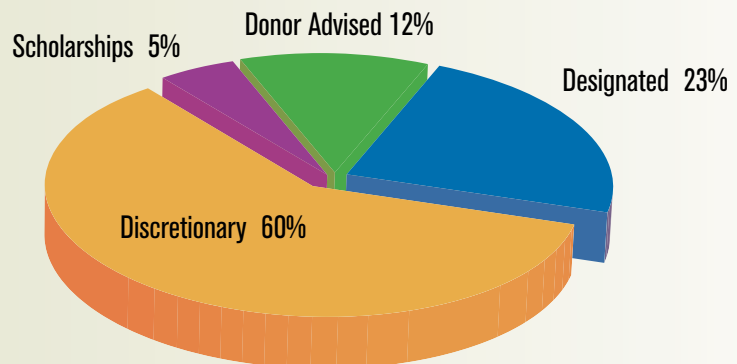
**\$26,095,727\***

\*Includes expenses related to the implementation of various programs and contracts. Does not include \$10,379,714 in grants administered on behalf of private foundation clients.

For a complete listing of our 2007 Distribution of Grants and Contracts, please visit:  
[www.hawaiicommunityfoundation.org](http://www.hawaiicommunityfoundation.org)

## Hawai'i Community Foundation

Program Type	Donor Advised	Designated	Discretionary
Advancing Nonprofits	\$500		\$286,620
Arts, Culture & Humanities	\$521,410	\$521,036	\$581,433
Civil Rights/Civil Liberties			\$8,000
Community Development	\$208,834	\$26,625	\$366,293
Education/Early Childhood Education	\$639,423	\$716,847	\$922,428
Environment	\$499,070	\$230,657	\$661,666
Geographic Areas			\$681,931
Health	\$374,852	\$1,059,000	\$9,022,025
Housing	\$20,000		\$32,000
Human Services	\$378,148	\$790,321	\$2,344,177
International	\$500		
Mental Health		\$36,313	
Medical Research	\$15,250	\$214,126	
Scholarships (HCF Funds only)			1,260,230
Religion/Spiritual Development	\$128,300	\$451,597	\$3,000
Philanthropy & Voluntarism	\$1,000		\$9,990
Public Policy			\$5,000
Other	\$30,550	\$2,082,470	\$399,812
Youth Development	\$260,866		\$303,427
<b>Total</b>	<b>\$3,078,703</b>	<b>\$6,128,992</b>	<b>\$16,888,032</b>





# Advancing the Nonprofit Sector

In addition to offering programs and grants that are specific to a field, geographic area or population, the Foundation remains committed to three areas that are broader and available to organizations statewide:

## ORGANIZATIONAL EFFECTIVENESS PROGRAM

The goal of this program is to build strong and effective nonprofit organizations. The program focuses on developing capable leaders, effective management and good governance.

### LEADERSHIP DEVELOPMENT

The Foundation believes that strong leadership is key to increasing the impact of nonprofits in the community.

#### Promoting Outstanding Nonprofit Organizations (PONO) Leadership Program

Launched in 2003, the goal of PONO is to create a network of empowered, self-aware, resilient leaders who are capable of navigating change. PONO brings together a group of successful, mid-career, nonprofit executive directors for a year-long dynamic learning experience. This program is a partnership between the Hawai'i Community Foundation and the Case Foundation.

Grants made in 2007: 14  
Total amount distributed: \$379,090

#### The Ho'okele Award

The award was created in 2002 by the Wallace Alexander Gerbode Foundation and the Hawai'i Community Foundation. It pays tribute each year to outstanding leaders in the nonprofit sector.

Grants made in 2007: 4  
Total amount distributed: \$40,000

## GRANTMAKING

### Organizational Capacity Building Grantmaking Program

The program increases the capacity of nonprofit organizations by strengthening organizational infrastructure, internal management, board governance, strategic planning, technology, marketing, strategic restructuring, executive transitions, and fundraising development.

Grants made in 2007: 58  
Total amount distributed: \$1,015,855

## FIELD BUILDING OPPORTUNITIES AND RESOURCES

The Foundation supports the advancement of knowledge, understanding and effectiveness of nonprofits by providing training opportunities and disseminating information through research and online resources.

#### "Linking Money to Mission," a financial workshop conducted by the Nonprofit Finance Fund

Participants statewide: 57

## YOUTH MATTERS INITIATIVE

The goal of this initiative is to improve the outcomes for Hawai'i youth between the ages of 13–24. A key strategy of the initiative is building a Network of community organizations that serve youth. Over the next several years this Network will work on a shared set of goals, build a common measurement tool, and improve their capacity in areas such as youth engagement and evaluation. The Youth Matters initiative was launched in 2007 with support from the W.K. Kellogg and Hawai'i Community Foundations.

Grants made in 2007: 17  
Total amount distributed: \$221,000

## PARTNERSHIPS & COLLABORATIONS

The Foundation facilitates and participates in strategic partnerships and collaborations with public and private funders.

## HAWAI'I PEOPLE'S FUND

For several years, the Hawai'i Community Foundation operated the Mo' Bettah Together program to foster social networks within and among communities as a way of promoting positive community change. The Hawai'i Community Foundation and Hawai'i People's Fund have created a partnership to co-fund projects that support progressive social change and community empowerment.

Grants made in 2007: 6  
Total amount distributed: \$19,025

*(continued on page 20)*



*(continued from page 19)*

### **HAWAI'I CHILDREN'S TRUST FUND**

The fund was established at the Hawai'i Community Foundation in 1993 as a public-private partnership. Partners include the Department of Health, HCTF Advisory Board, HCTF Advisory Committee and Coalition, and the Hawai'i Community Foundation. It supports programs aimed at preventing child abuse and neglect through grants for direct services, community events and public awareness and advocacy.

Grants made in 2007: 33

Total amount distributed: \$547,548

### **HAWAI'I TOBACCO PREVENTION AND CONTROL TRUST FUND**

The Hawai'i Legislature created this fund in 1999 from a portion of the tobacco settlement money that was awarded to the state of Hawai'i from

a multi-million dollar settlement against the tobacco industry. The Hawai'i Community Foundation, under contract with the Hawai'i State Department of Health, administers this fund. The fund supports grants for prevention, adult and youth cessation services, media, and training and technical assistance.

Grants and contracts made in 2007: 39

Total amount distributed: \$5,327,283

### **CRYSTAL METHAMPHETAMINE INITIATIVE**

The Foundation administers four federal grants from the Department of Justice, Office of Community Oriented Policing Services (DOJ/COPS)\* in collaboration with county governments and key agencies. Funds from these grants will address the methamphetamine problem statewide. The initiative supports law enforcement, treatment,

and prevention/education as a strategy to combat the crystal methamphetamine epidemic statewide.

Grants and contracts made in 2007: 7

Total amount distributed: \$1,936,086

### **APPLYING FOR A GRANT**

In most cases, only Hawai'i organizations, either as a unit of government or classified by the IRS as a 501(c)(3) charitable organization and not a private foundation, are eligible to apply for a grant. Exceptions may be made in specific program areas. Find out more at [www.hawaiicommunityfoundation.org](http://www.hawaiicommunityfoundation.org).



# We Make Giving Convenient and Rewarding

## OUR COMMITMENT

No matter how you choose to fulfill your charitable giving goals, the Hawai'i Community Foundation is dedicated to meeting your individual needs and objectives.

## CONTACT US

Hawai'i Community Foundation would be pleased to work with you, your attorney or financial advisor on your charitable goals. Please contact our Philanthropic Services Department at (808)566-5560 (toll-free at 1-888-731-3863) or e-mail us at [clientservices@hcf-hawaii.org](mailto:clientservices@hcf-hawaii.org).

As a statewide, public foundation, we have a responsibility to serve the broader interests in our community, not just our own. We are committed to building the charitable assets of Hawai'i, regardless of whether those assets reside at the Foundation or not. Here's how we can help:

- With more than 90 years of charitable experience, we know Hawai'i and its people.
- As a statewide foundation with offices and staff throughout the islands, we're in contact with hundreds of local nonprofits and recognize their ever-changing needs.
- We offer referrals to other nonprofits and professional resources when needed and have an extensive network of private and public sector partners.

- With the largest grantmaking staff in Hawai'i, we're your personal resource in any area of philanthropic interest.
- We assist professional advisors, such as estate planning attorneys and financial advisors, with information about current tax laws and methods for charitable giving.
- We can offer reasonably priced charitable services that take advantage of our size and scale with over 500 funds and assets of \$500 million.
- Our relationships with mainland institutions can also assist you with out-of-state interests.

## Share in the Joy of Giving

We're here to help you make the most of your giving to whatever charity you choose at any stage of your life.

We are encouraged and inspired by the generosity of our donors—our partners in philanthropy. Individually, collectively and together with their families, they are helping to make a difference through philanthropy, in our communities statewide. Here are some different ways to give:

## INDIVIDUAL PUBLIC CHARITY

You can give directly to your favorite charity. This type of giving enables nonprofit organizations to continue to carry out its work in the community. It also enables you to become personally involved with the organization and its mission.

We can help you identify worthy causes and specific programs and projects to support.

*(continued on page 22)*



(continued from page 21)

COMMUNITY FOUNDATION

Community foundations are a special kind of charity. Its creator is the community—hundreds of donors joining together to make a difference where they live. Community foundations can assist you with establishing funds and selecting the degree of grantmaking involvement you desire. A fund can be designed to make grants during

your lifetime or it can be created as a perpetual fund or endowment, which benefits charities beyond your lifetime. At the Hawai'i Community Foundation our emphasis is placed on the delivery of high quality personalized philanthropic services to donors/clients as well as the professional legal and financial advisors who serve them. We have over 500 funds each with

its own purpose as determined by its donor. We award grants in a variety of areas including, but not limited to education, arts and culture, scholarships, the environment and medical research. Donors can also establish “unrestricted” funds, which allows the Foundation to respond to current and emerging community needs. See page 28 for a list of our funds.

PRIVATE FOUNDATION

You or your family can contribute assets to establish a private foundation and control the investment and distribution of those assets as allowed by law. This type of giving may be most advantageous for those wishing to maintain a maximum level of independence.

We provide a variety of professional philanthropic and grant administration services to family, corporate and private foundations. Our goal is to assist foundation directors in fulfilling their philanthropic mission through investments in the community.

CONTRACTUAL SERVICES TO PRIVATE FOUNDATIONS INCLUDE:

- Providing the “storefront” for your foundation.
- Handling inquiries from the public and nonprofit organizations.
- Promoting compliance with federal and state tax regulations.

- Supporting strategic grantmaking consistent with the Foundation’s mission, interests and values.
- Evaluating proposals, applications and final reports.
- Preparing materials for board members’ review and providing staffing for meetings.
- Executing the Foundation’s grant decisions.
- Facilitating community connections through communication.
- Providing back office administrative support.

Private foundation clients:

\*also scholarship provider

- Atherton Family Foundation\*
- Fred Baldwin Memorial Foundation
- Cooke Foundation, Limited
- Victoria S. & Bradley L. Geist Foundation\*
- Kaneta Foundation\*
- Rose Perenin Foundation
- George F. Straub Trust

We also serve private foundation clients who wish to remain anonymous.

Scholarship foundation clients:

- ‘Aiea General Hospital Association Scholarship Fund
- Cottington Trust for Intellectually Gifted Children
- GEAR UP Scholarship Program
- Hawai'i Veterans Memorial Fund
- Bernice P. Irwin Trust
- Kai'ulani Home for Girls Trust
- Ida M. Pope Memorial Trust
- Eizo & Toyo Sakumoto Trust
- Gertrude S. Straub Trust, M. M. Scott Scholarship Fund
- Mildred Towle Scholarship Fund
- Dr. Hans & Clara D. Zimmerman Foundation



# Legacy Society

\*deceased

Richard Aadland  
Ernestine Armstrong  
Andy & Maureen Bates  
Robert R. & Jacqueline\* Bean  
Renold B. Ben  
Wayne R. Benner  
Rita Bennington  
Ann Bernson  
Jennifer Bohlin  
Susan Bradford



Carol J. and William R. Coops

Frances K. Brossy  
Catherine Capozzoli  
Janis Casco  
Lorinda Cheng-Arashiro  
Henry B. Clark  
William R. & Carol J. Coops  
Richard M. & Brenda Cowan  
Richard & Myrna Cundy  
Paul Dahlquist  
John\* & Marti deBenedetti  
Andrew & Edith Don  
Clarence & Gertrude Ferdun  
Ceferino C. & Mitsuko Fernandez

Jon & Eleyne Fia  
Patsy K. Fujimoto  
Jerrold & Niki Fuller  
Marc W. Greenwell  
Randolph Hack  
Walter D. Haskins  
Ronald J. Hays  
Will Henderson  
Laila F. Hoffmann  
Sadao & Jean Honda  
Hull & Taylor  
Leonard & Rebecca Kamp  
Robin Kaye  
Elmer Keao  
Gerald & Karen Keir  
William G. & Karen M. Kemp  
Elspeth Kerr  
Nancy Kim  
Steven Kokubun  
Ivor Kraft  
Gerald W. Kwock  
Jack & Chonita\* Larsen  
Chester P. Lau  
Bernadette Lau  
Elvira Lee  
John E. Loomis\*  
Cora A. Manayan  
Paul Mancini  
Karen Masaki  
Robert R. & Evanita Midkiff  
Hazel Milnor  
Esther A. Mitsunaga  
Richard D. & Cheryl H. Moore  
Mary May Moore\*  
Melvyn & Sadie Murakami  
Lori Odell

Jennie L. Phillips  
Edward J. Powell  
Henry E. Renteria  
Earl G. Reque  
Gary & Marsha Robb  
Michael & Kathleen Roeder  
Claude Rothe  
Greg Sakaguchi  
Liane Sakai  
Frank H. Sayre  
Marsha Schweitzer  
George C. & Nancy W. Slain  
Don H. Smith  
G. William & Heather Snipes  
Perry & Sally Sorenson  
Jefferson & Patricia Stillwell  
Stanley R. Stong  
Michael P. & Carol Sullivan  
Russell H. Taft  
James & Diana Thomas  
David A. & Virginia Thomas  
John A. & Mary Karyl Thorne  
Earl & Frances Tokumura  
M. Yukie Tokuyama  
Thelma W. Tyler  
Totthi Vreedenburgh  
Philip & Louise Wang  
Blake Watanabe  
Kendall P. Watts  
Gulab & Indru Watumull  
Sim Wenner  
Katherine H. Wery  
Robert E.\* & Karen K. White  
Carol Yoshimura Yamada  
Duen Yen  
Beatrice Young



# Donors

## 2007

\*deceased

The following corporations, foundations, trusts, and individuals made contributions to the Foundation valued at \$250 or more in 2007. We also acknowledge the gifts of those donors who have requested to remain anonymous.

### Corporate

100th Infantry Battalion Veterans Club  
Aloha Petroleum, Ltd.  
American Red Cross, Hawai'i State Chapter  
Auto Body Hawai'i  
Bank of Hawai'i  
BEI Hawai'i  
Big Island Toyota  
Booz Allen Hamilton  
Castle & Cooke Resorts, LLC  
Chipin Inc.  
Chun, Kerr, Dodd, Beaman & Wong  
City & County of Honolulu  
Clark Realty  
Community Links Hawai'i  
Delta Sigma Delta—Hawai'i Chapter  
Department of Justice  
Economy Plumbing & Sheetmetal, Inc.  
Entrepreneurs Foundation of Hawai'i  
F. Koehnen, Ltd.  
Fairmont Hotels, Inc.  
First Hawaiian Bank  
Foodland Super Market, Ltd.  
Friends of Kaua'i Aloha Endowment  
GivingNet, Inc.  
Gomes Truck Rentals, Inc.

Grace Pacific Corporation  
Greystone Development Company, LLC  
Group 70 International, Inc.  
Haseko, Inc.  
Hawai'i Council for the Humanities  
Hawai'i Dental Association  
Hawai'i Pizza Hut, Inc.  
Hawai'i Precast, Inc.  
Hawai'i Society of Certified Public Accountants  
Hawaiian Electric Co., Inc.  
Hawaiian Electric Industries Charitable Foundation  
Hawaiian Pedals Limited  
Hawktree International, Inc.  
Holy Innocents' Episcopal Church  
Honolulu Board of Realtors  
HT&T Truck Center  
Humble Services  
Ing, Horikawa, Jorgensen & Stewart  
Ironman: World Triathlon Corporation  
Isemoto Contracting Co., Ltd.  
Jaki, LLC  
JTSI, Inc.  
Kalama Land Company, Ltd.  
Kalihi Education Coalition  
Kika, Inc.  
Kraftsman Auto Body, Inc.  
KTA Super Stores  
Kuroda Autobody, Inc.  
Lacy & Jackson, Attorneys at Law, LLC  
Lowson & Associates  
Lucas Trust Ventures  
Malama Compounding Pharmacy, Inc.  
Maui Historical Society  
Maui Real Estate Ventures, Inc.  
DBA Keller Williams Realty

Moonbow Productions, LLC  
Na Loio Immigrant Rights & Public Interest Legal Center  
Naminori, LLC  
O'ahu Filipino Community Council Golf Scholarship  
Outrigger Canoe Club  
Pacific Islanders In Communications  
PacMar, Inc.  
Philippine Nurses Association Hawai'i  
Princeville SC, LLC  
Pu'u Wa'awa'a Ranch, LLC  
Realtors Association of Maui, Inc.  
Red Ohia, LLC  
Retina Associates of Hawai'i, Inc.  
Roses Systems Solutions  
Saiva Siddhanta Church  
SCEC  
Star Markets, Ltd. & the Fujieki Family Foundation  
State of Hawai'i  
State of Hawai'i—Department of Accounting & General Services  
Tawhiri Power, LLC  
The Estate of James Campbell  
The Friends of the Library of Hawai'i  
The Honolulu Advertiser  
The Specialists, LLC  
Thunder Development, Inc.  
Tomscott Incorporated  
Underwood Construction Co.  
University of Hawai'i  
US Department of Labor/Employment & Training Administration  
USAFunds  
Valley Marketplace Partners/  
Old Kōloa Town



Wailea Realty Corporation  
 Wayne T. Yamauchi Insurance Agency, Inc.  
 WB Kūki'o Resorts, LLC  
 William L. Wong, CPA & Associates, Inc.

### Foundations & Trusts

Albert Ichiki Trust  
 Anne B. W. Swanson Revocable Trust  
 Astrid Monson Revocable Trust  
 Atherton Family Foundation  
 Balarama Dasa Trust  
 Bobbie & Mike Wilsey Fund of  
 The San Francisco Foundation  
 Bowman Family Foundation  
 Cecil G. Marshall Trust  
 Czerwinski Family Foundation  
 Doo Wook & Helen Nahm Choy Trust  
 Dorathea Helene Flint Unitrust  
 Dowling Community Improvement  
 Foundation  
 Estate of Robert Blaine Thomas  
 Esther Stubblefield Trust  
 F. S. & Mary Lyman Trust  
 Frank & Katherine Woodford  
 Memorial Trust  
 Gary & Hilde Nii Trust  
 Gerrit R. Ludwig Trust  
 Jenard & Gail Gross Fund of the Greater  
 Houston Community Foundation  
 Harriett J. Thomas Trust  
 Hilo Chinese School Charitable Trust  
 Jean I. Fennimore Trust  
 John M. Ross Foundation  
 June L. Olson Trust  
 Kahiau Foundation  
 Karen K. White Revocable Living Trust  
 Keith & Arlene Bronstein Foundation

Kilgo Charitable Trust  
 Koaniani Fund of the Silicon Valley  
 Community Foundation  
 Lahainaluna High School Foundation  
 Larry & Beatrice Ching Foundation  
 Sara & William Anderson Barnes Fund  
 of the Marin Community Foundation  
 Mary Litaker Trust  
 Mary T. Kruse Revocable Trust  
 Mary Wentworth Deering Trust  
 Michael G. Malaghan Charitable  
 Remainder Trust  
 Nadine N. Moseley Foundation  
 Nichols Charitable Remainder Unitrust  
 Ouida Mundy Hill Irrevocable Trust  
 Parker Ranch Foundation Trust  
 Parks Family Foundation  
 Prisanlee Trust  
 Robert E. Black Memorial Trust  
 Schlenger Family Foundation  
 The Heidrich Fund of the Silicon  
 Valley Community Foundation  
 Mackenzie Fund of the Silicon Valley  
 Community Foundation  
 The A.C. Kobayashi Family  
 Foundation  
 The Pierre M. Omidyar Living Trust  
 W.K. Kellogg Foundation  
 Wallace Alexander Gerbode Foundation  
 Maude Wodehouse Trust

### Individuals

Ariel Abadilla  
 Steven M. Abraham  
 Theresa A. A'ea  
 Samuel & Laurie T. Ainslie  
 Ralph Akamine  
 Vanya J. Akraboff

Michael F. Allen  
 Robert A. Alm  
 Moana L. Andersen  
 David L. Anderson  
 Mary L. Andrews  
 Thomas E. & Lynda L. Armbruster  
 Cynthia D. Arnett  
 Ronald & Sue Aronson  
 Kuhio & Claire L. Asam  
 George J. Atta  
 Brooke M. Bacon  
 Eugene Bal  
 Ferdinand Bautista  
 Robert R. Bean  
 Gary Beason  
 Elisabeth A. Benard  
 Paul Bierman-Lytle  
 Charles Bonnet  
 Elmer E. Botsai  
 Elliott J. Bowdach  
 Jonathan Bridge  
 Balbi Brooks  
 Edmund & Martha Burke  
 Georgia A. Callaway  
 Ronald E. Campbell  
 Janice Caravalho  
 Carl A. & Christine Carlson  
 Evie Carranza  
 Daniel Case  
 Kelen R. Casey  
 Gary Caulfield  
 Peggy T. Cha  
 Lawrence Chaffin  
 Lynette L. Char  
 Dorothy Chen  
 Wallace Chin



Patricia T. Chiota	George B. Fry	Diane S. Holschuh	Edith Leong
Randall S. Cislo	Terri T. Fujii	Norman G. & Lorna S. Hong	Katharine P. Lloyd
Samuel A. & Mary M. Cooke	Jon K. & Jann M. Fujimoto	Susan J. Hoyez	Karl H. & Catherine P. Lo
Geraldyn C. Coombs	Emily T. Gail	Mark S. Hubbard	Earle F. & Mary Anne Long
Jean F. Cornuelle	Jane Galante	Marie M. Imanaka	Mark R. Lorenzi
Maxine Correa	Pepito C. Galvez	Roy A. Inouye	John & Catherine Lowrey
Suzanne G. Courtney	Virginia V. Gannon	Kim Coco Iwamoto	Amy Luersen
Vincent F. Coviello	Joseph A. & Carol M. Garcia	Jacqueline C. Jaques-Smythe	Cathy Luke
Joseph Crimando	Benjy Garfinkle	Charlie R. Jones	Mette W. Lyons
Gail H. Crosson	Karla S. Gillette	Howard & Jane Kadohiro	Karen A. Mackovjak
Grace Czerwinski	Gina Giugni	Jean Kajikawa	Marla Maglangit
Chips DaMate	Kenneth G. & Marjorie N. Goodhue	Dennis H. Kamae	Thomas E. & Natalie Mahoney
Rachun Danapong	James H. Greene, Jr.	Donald Kanagawa	Michael & Tomoko Malaghan
Karen E. Day	Stacey P. Grossman	Charles Kaneshiro	James M. Malkin
Peter W. Dease	Anthony R. Guerrero	Cheryl Kaneshiro	William A. & Maureen P. Marrs
Georgianna DeCosta	Richard W. Gushman	Soloman & Susan A. Kanoho	Calvin Masaki
Michael & Susan Dell	Ellen Hamada	Sol & Margaret L. Kaulukukui	Luke B. & Soo B. Mashburn
Jocelyn R. Demirbag	Catherine Hamilton	Ruth S. Kiehm	George* & Dorothy D. Mason
Andrew & Edith Don	Jeanne Hamilton	Garrett K. & Debra Kim	Linda S. Masterson
Joline L. Dorner	Susan J. Hansen	Nancy Kim	Leslie Matsubara
James E. & MayField M. Drorbaugh	Rodney Harano	Harry & Roberta Kim	Curtis K. & Charlotte M. Matsui
Patrick J. Duarte	Gregory & Sally Hartman	William H. King	Reid Matsumoto
Dru & Laura L. Dunworth	Warren H. Haruki	Laura Kinney	Gifford R. Matsuoka
Jaedine Ehia	Walter D. Haskins	Cami L. Kloster	Patrick & Diane K. McCary
Barbara Y. Essman	Kenneth M. & Desiree C. Hayo	Clare C. Kohatsu	John & Fran McClure
Margaret P. Evans	Michael Hayo	Paul Kosasa	Sean J. McDonough
Timothy Evans	Will Henderson	Wayne Kotaki	Betty McKee
Michael A. Fagundes	Michael J. Henninger	Arthur & Maile T. Kruse	Shirley McKown
Stephen P. & Carollanne B. Falcinella	Hitoshi & Kathleen S. Hida	Audrey Kubota	Deborah R. Mcmillan
Paul J. & Leona W. Farrell	James W. & Mary Helen Higgins	Iris C. Kurosawa	William McMorrow
Richard & Virginia Fischer	Trevor A. Hill	Dawn R. Ladera	Hilda Michioka
Mary Anne Fitch	Masako Hirata	Robert H. Laird	Gregory & Linda C. Miki
Cynthia M. Flating	Vernon & Gaynielle Hirata	Jim & Lynn Lally	J. Pi'ikea Miller
Ed & Auriol Flavell	Richard & Estella Hoag	Milton K. & Wah Lan Lau	Wayne & Colleen Minami
Belinda Foley	R. Michael & Gwen Hobbs	Bernard L. & Mary M. Lecavelier	Wendy J. Mitchell
Charles D. Fox	Todd & Cheryl M. Holdcroft	Margie A. Lee	Myron Mitsuyasu
		Patricia C. Lee	Catherine E. Moore



Beatrice M. Moreira  
 Gary S. & Faye Morimoto  
 Ross K. Morishige  
 Jean A. Murphy  
 Mary Murphy  
 Joan Naito  
 Craig Nakama  
 Janice Nakama  
 Luana S. Nakano  
 Ralph Nakatsuka  
 Charles & Suzanne M. Nakoa  
 Roy Nihei  
 James I. Nishimoto  
 Lily Ochoco  
 Francis S. Oda  
 Jane T. Oki  
 Sada Okumura & John H.  
 Drouilhet  
 Judy Oliveira  
 Darryl & Patricia B. Oliveira  
 Ruth K. Ota  
 Laurice N. Otsuka  
 Jeffrey H. Overton  
 Alan L. Paige  
 Vincent Palmieri  
 Carl D. & Mary Jane Panattoni  
 Nelson & Eleanor L. Park  
 Gladys J. Park  
 Andrea L. Peace  
 Antoinette Polancy  
 Susan Poole  
 S.V. & Diane Quitiquit  
 Alejandra Ramos  
 Wayne J. Rapozo  
 Lary D. Ratliff  
 Rudy P. & Patricia Reese



Wayne J. Rapozo

Henry E. Renteria  
 Deborah Rice  
 Kristin B. Rocheleau  
 Lawrence & Patricia Rodriguez  
 Joyce E. Romero  
 Gerry L. Rott  
 Kay E. Rouse  
 Dennis W. Rowe  
 Christine M. Ruotola  
 Brian Sakamaki  
 Louis & Nancy Salera  
 Frank H. & Laura M. Sayre  
 Susan L. Sayre  
 Elizabeth Sayre-King  
 Michael D. & Diana M.  
 Schochet  
 Andy & Suzie Hayes-Schwartz  
 Susan E. Scott  
 Sheryl B. Seaman  
 T. Raymond & Betsy Sekiya  
 Chris Shibley  
 Marcia Shimokawa  
 Valerie Shintaku  
 Kyle M. & Diana L. Smith

Kent R. & Paula G. Smith  
 Shirlee Smith  
 Sharon G. Solmssen  
 Patrick T. Sonoda  
 Perry & Sally Sorenson  
 Harry & Kalo M. Soukop  
 John & Theanne D. Specht  
 Mary D. Stanton  
 Julia Staten  
 Kalei Stern  
 Gary & Apolonia A. Stice  
 John E. Stokes  
 James L. & Christine S. Stone  
 David & Karen Stoutemyer  
 Michelle V. Stowers  
 Adam C. Straub  
 Lawrence J. & Joyce Stupski  
 Timothy M. Takaezu & Jodi  
 A. Lam  
 Kinney & Susan Tamaribuchi  
 Scott Tangonan  
 Barry K. Taniguchi  
 Marlis Tanoai  
 Richard & Jane Tapper  
 Lynn Taube  
 Patricia K. Taylor  
 Derinda Thatcher  
 Don P. Thompson  
 Lorraine J. Thompson  
 John A. & Mary Karyl Thorne  
 Robert Todd  
 Julie H. Torigoe  
 Christopher Tortoriciand &  
 the University of Toronto  
 Golf Team  
 Walter & Carolyn Treiber  
 Licia Trotter

Stephen & Linda Tsai  
 Michael C. & Juliette M.  
 Tulang  
 Gwen H. Ueoka  
 Margaret S. Ushijima  
 Ralph S. Usina  
 Christine van Bergeijk  
 Alexander G. Van Broek  
 Sarah K. Vann  
 Dominica Villiaros  
 Charles Wall  
 Roberta J. Wallace Cable  
 Sean M. Watabayashi  
 Herbert S. Watanabe  
 Kendall P. Watts  
 Robert T. Watts\*  
 Arthur H. Weber  
 Lydia A. Weiss  
 Damaris Wescott  
 Robert\* & Karen K. White  
 L. Elizabeth Witt  
 Steven Wolf  
 Nick Wong  
 William L. Wong  
 Kathleen Worley  
 Ronald K. Yamada  
 Iolani K. Yamashiro  
 Eric K. Yeaman  
 Joan Yokoyama  
 Jason Yoshimi  
 Harriet O. Yoshimori  
 Haruyo Yoshioka  
 Earle B. & Ruth E. Young  
 Stephen H. Yuen  
 Roberto Yumol



# Charitable Funds

## 2007

new funds notated in *italics*

Hawai'i Community Foundation offers a wide range of funds to provide maximum flexibility to meet the philanthropic goals of our clients and the needs of the community.

### Unrestricted Funds

These funds have the greatest potential to respond to new and emerging needs in our community. Donors give full discretion to Hawai'i Community Foundation's Board of Governors to authorize grants that provide the greatest impact.

Board of Governors Fund

Burkland Family Fund

Busjaeger Fund

Margaret Chang Fund

Community Needs Fund  
(Discretionary General Fund)

Lowell Dillingham Fund

*Dorothea Helene Flint Fund*

Charlotte M. Florine Fund

Victoria S. Geist Fund

William & Edna Howe Fund

Thomas & Mary Litaker Fund

Mr. & Mrs. Frederick K. Makino  
Memorial Fund

Eleanor & T. Dudley Musson Fund

J. Ward Russell, Jr. Fund

Andrew & Estelle Schustek Fund

Peter C. Statler Fund

Arneil Petrie Tout Fund

### Donor Advised Funds

These funds are charitable vehicles that allow donors maximum flexibility to recommend grants to benefit the community. Donors are free to focus on the rewards of giving while the Foundation manages the administrative details of the fund.

Aina-Nalu Charitable Fund

Oscar L. & Ernestine H. Armstrong  
Advised Fund

Aspect Technology Fund

Robert R. & Jacqueline J.H. Bean Fund #2

Jacqueline J.H. Bean Memorial Fund

Blue Marble Charitable Foundation Fund

Garret D. Bordenave Memorial Fund

Tahmi Brodhead Fund

*Broken Trust Royalty Fund*

John A. Burns School of Medicine  
Alumni Association Fund

James & Abigail Kuaihelani Campbell  
Fund

C.H.A.N.G.E. Fund

Mervin K. Cash Memorial Fund

Central Pacific Bank Community  
Endowment Fund

Peter C.-P. Char Memorial Fund

Chevron Education Fund

Philip & Gerry Wong Ching Family Fund

Dr. Albert C.K. Chun-Hoon Fund

Clark Realty Corporation Fund

William R. & Carol J. Coops  
Charitable Fund

Stan Czerwinski Education Fund

Nikhil Dadlani Keiki Fund

Deviants from the Norm Fund

*Andrew & Edith Don Fund*

Edward J. Doty Charitable Fund

J.C. Earle Family Fund

Economic Opportunity Fund

Economy Plumbing & Sheet Metal Inc.  
& Matsuzaki Family Fund

El Arco Iris Fund

Emergency Group Fund

Muriel MacFarlane Flanders Fund

Friends of Diamond Head Fund

James F. & Helen G. Gary Charitable Fund

Goodale Family Fund

Group 70 Foundation Fund

Growney Family Fund

Hapa Fund

Hawai'i Dental Association

- *Dental Education Fund*
- Dental Samaritans Fund
- Relief Fund

Hawai'i Business Roundtable Education  
Fund

Hawai'i Pizza Hut Literacy Fund

Hawaiian Legacy Foundation Fund

Hawktree International/Donald M. Takaki  
Fund

Hawktree International/Takaki Family  
Fund

Hoku Scientific Charitable Fund

Tommy Holmes Foundation Fund

Honolulu Board of Realtors Housing Fund

Sheridan C.F. Ing Fund

*Florence Iwamoto Kaua'i Fund*

Lesley & Spencer Johnson Fund

Kaua'i Aloha Endowment Fund

Kaua'i Children's Environmental  
Education Fund

Kawakami Family Fund

Kekumuola Fund

Koa Fund



Kosasa Family Fund  
 Koshiha Family Fund  
 Krucky 'Ohana Fund  
 Kūki'o Community Fund  
 Kulamanu Charitable Fund  
 Walter H. Kupau Memorial Fund  
 Milton & Henrietta Kushkin Fund  
*Timothy Takaazu & Jodi Lam Fund*  
 D. Lau Family Fund  
 Clarence Lee Lunar Fund  
 Left Wing Right Brain Fund  
 Lima Kokua Fund  
 Live Aloha Fund  
 Paul C.T. & Violet Shaw Loo Fund  
 Makana o Maui Fund  
 Michael & Tomako Malaghan Fund  
*Malama Kīpahulu Fund*  
 Marisla Fund  
 George Mason Fund  
 Moonglow Fund  
 Morimoto & Nishioka Fund  
 Muffles Fund  
 Na 'Ōiwi Kane Fund  
 New Moon Fund  
*Pierre & Pamela Omidyar Fund*  
 Pacific Medical Administrative Group  
 Endowment Fund  
 Pahiki Nui Fund  
 Pearl Harbor Fund  
*Quack Moore Music Fund*  
*Rapozo Kama'aina Fund*  
 REC Fund - CTKC  
 REC Fund - MCC  
 REC Fund - RCL  
 Jose L. Romero Memorial Fund  
 Steve & Joanne Ruppert Fund



Buzz and Kitty Wo

Gordon Russell Fund  
 Sananikone-Le Khac Family Fund  
 Daniel R. Sayre Memorial Fund  
 Suzie Hayes-Schwartz & Andy Schwartz  
 Family Fund  
 Sheridan Fund  
 Carole Sheridan Memorial Fund  
 Edith Wilhelmina Sherock Fund  
 Joanne Holmes Shigekane Fund  
 George C. & Nancy Wright Slain Fund  
*Kent & Polli Smith Fund*  
 Laura & Dallas Smith Family Fund  
 Spoehr Family Fund  
 Star Markets, Ltd. & The Fujieki Family  
 Foundation Fund  
 Dwayne & Marti Steele Fund  
 Nakila & Marti Steele Family Fund  
 Karen & David Stoutemyer  
 Charitable Fund  
 Stupski Family Fund  
 Colleen Sullivan Fund  
 Patrick J. Sullivan Fund  
 Takenaka Kaua'i Community Fund  
 Takenaka Kaua'i Cultural &  
 Environmental Fund  
 Taketa Family Fund  
*Tsai Family Charitable Fund*  
 Margaret & John Ushijima Fund

Victims of Violent Crimes in Hawai'i Fund  
 Jenai & Roger Wall Family Fund  
 Kendall Palmer Watts Fund  
 Marjorie Waterhouse Watts  
 Reading Enhancement Grant—  
 Kōloa School Fund  
 Leonora F. & Joseph K. Wee Family Fund  
 Irene & Alan Weinberg Fund  
 Fred & Mary Weyand Fund  
 Kitty & Buzz Wo Family Fund  
 Yamada Scott Family Fund  
 Nadao & Mieko Yoshinaga Family Fund  
 Nadao & Mieko Yoshinaga  
 Education Fund

### Designated Funds

These funds were endowed by individuals and organizations to ensure that their charities of choice will continue. In each case, the contributor selected one or more nonprofit organizations to benefit from the grants for as long as the charities exist.

Grace K.J. Abernethy Fund  
 Brilly & Richard Akeroyd Fund  
 Aloha Temple Patient Transportation Fund  
 Aloha United Way Endowment Trust Fund  
 American Red Cross Endowment Fund  
 Louis Asing Fund  
 Atherton Fund  
 A.S. Atherton Memorial Scholarship Fund  
 John & Dorothy Baird Fund  
 Bobby Benson Center Endowment Fund  
 Charles & Helen P. Bishop Fund  
 William M. & Violet M. Borges  
 Designated Fund  
 Christian Bosse Fund  
 Brodhead Family Scholarship Fund  
 Robert E.L. Brooks Fund



Alberta E. Brown Fund	Edwin T. & Leilani Kam Scholarship Fund	Josie & Don Over Memorial Fund
Brownce Brown Performing Arts Scholarship Fund	<i>Kapalua Maui Charities Endowed Scholarship for Lahainaluna High School Fund</i>	Josie & Don Over Dance Fund
George Reynold Carter Fund	<i>Kaua'i's Hindu Monastery Fund</i>	Pacific Century Fellows Endowment Fund
Rebecca Carter Fund	Thomas J. Keller Trust Fund	Parker & Bernieri Fund for Lē'ahi Hospital
Robert F. Chalmers Memorial Fund	John F. Kennedy Memorial Scholarship in History Fund	Prisanlee Fund
Chia Ling Chang Fund in Memory of Dr. Fred I. Gilbert, Jr.	Clifford Kimball Memorial Fund	Virginia Pearson Ransburg Fund
Doo Wook & Helen Nahm Choy Fund	King Lunalilo Foundation Fund	Leon J. Rhodes Fund
Mary Wilson Crawford Fund	Ellen M. Koenig Memorial Fund	William S. Richardson Fund
Minnie P. Cuthbertson Fund	Marie Kohli Fund	Julia Waterhouse Rodenhurst Fund
Elizabeth Flora Deinert Fund	Lahainaluna High School Foundation Endowment Fund	Madelyn Ross Fund
Gwendolen B. Dekum Fund	Lahainaluna High School Foundation Endowment Friends of the Lahainaluna Library Fund	Maybelle F. Roth Fund
Diamond Head Theatre Fund	Lahainaluna High School Foundation Endowment Scholarship Fund	Maybelle F. Roth Research Prize in Conservation Biology Fund
Dorothy Duniway Fund	Jeanette A. Le Vine—Temple Emanu-El Fund	Royal Hawaiian Band Sick Benefit Fund
Edward M. Ehrhorn Entomological Scholarship Fund	Leadership Kaua'i Endowment Fund	Roy Hideyuki Sako Memorial Fund
The Center Endowment Fund	Lē'ahi Endowed Pulmonary Chair Fund	Salvation Army Fund
Thz Fo Farm Fund	Elizabeth Leithead Fund	Mary Sanford—Hawaiian Mission Children's Society Fund
George Howe Farnsworth Fund	Anna B. Lindemann Fund	Kathryn LaRue Saunders HUGS Endowment Fund
Chas Fisher Memorial Endowment Fund	Katherine Hopper Livingston Fund	Walter & Cathy Scott Memorial Fund
Friends of Princess Victoria Ka'iulani School Fund	Jack & Marie Lord Fund	<i>Sekiya of Fukuoka/Hawai'i Endowment Fund</i>
Amelia G. Gaston Fund	Jack & Marie Lord Fund #2	A.P. Sereno Memorial Scholarship Fund
Grandma's Christian Elementary Tuition Assistance Fund	<i>Jack &amp; Marie Lord LP Fund</i>	Laura D. Sherman Fund
Stephen G. Greenough Memorial Fund	Susan Mahn Fund	Cyril O. Smith Fund
Hawai'i Pacific University, Hawai'i Loa Fund	Maui Academy of Performing Arts Scholarship Fund	Esther McClure Stubblefield Designated Fund
Hawai'i Public Television Endowment Fund	Mental Health Association in Hawai'i Endowment Fund	Elma F. Taylor Fund
Hawai'i Youth Opera Chorus Fund	Mental Health Kokua Fund	Takenaka Kaua'i Healthcare Fund
Takuji Hayashi, M.D. Memorial Fund	<i>Yasuko Mitsuyasu New Year's Day Meal Fund</i>	David & Frances Tatman Heifer Project International Fund
Ouida Mundy Hill Designated Memorial Fund	Aunt Maggie Monteiro Orphan Fund	Ernest "Tommy" & Harriett "Rusty" Thomas Fund
Historic Preserves of Hawai'i Fund	<i>Donald &amp; Astrid Monson Community Action Fund</i>	<i>Robert Blaine Thomas Fund</i>
<i>Shigeru &amp; Toyoko Ichiki Fund</i>	Na Loio, Immigrant Rights & Public Interest Legal Center Endowment Fund	Monsignor Benedict M. Vierra Fund
Irene I'i Holloway Fund	Clara T. Nakahara Fund	Mary & Paul Wagner Charitable Fund
Holy Innocents Episcopal Church Endowment Fund	Vincent & Katherine Neal Memorial Fund	Eva H. Webb Fund
Honolulu Symphony Society Fund	<i>Gary T. &amp; Hilde M. Nii Designated Fund</i>	Franklin Benjamin Wells Fund fbo Public Television
Honpa Hongwanji Hawai'i Betsuin Fund	Annette Tyler North Fund	Walt Whitman Fund
Kihachiro J. Hotta Fund	Lenore & Chester O'Brien Fund	William Robert Wickland Fund
Dora R. Isenberg Molokoa Fund		Henry H. Wong Fund
		Ivena Ziegenhein Fund



## Field Of Interest Funds

These funds were created by contributors who stipulated that grants be made in a particular field, or to benefit a certain group of people. This type of fund assures the flexibility to adjust to future changes. The organizations or charities serving that field may change, merge or cease to exist, yet the need may continue.

4Charity Fund

Gwenfread Elaine Allen Fund

Ellen R. Ashton Fund

Baciu Cultural Fund

Robert Emens Black Fund

William M. & Violet M. Borges Fund

Wilson P. Cannon Fund

Hartwell & Rebecca Carter Fund

Compassion Capital #2 Fund

Department of Justice Year 1 Fund

Department of Justice Year 2 Fund

Department of Justice Year 3 Fund

Department of Justice Year 4 Fund

Department of Labor Fund

Environment Fund

‘Ewa Beach Community Fund

Jean I. Fennimore Fund

Oscar & Rosetta Fish Speech Therapy Fund

Foodland Community Fund

John & Roberta Garcia Fund

Kay A. Edwards Memorial Library Charitable Trust Fund

Allan Eldin & Agnes Sutorik Geiger Fund

Henry Ku‘ualoha & Muriel Roselani Giugni Fund

Ritchie M. Gregory Fund

Haseko Training Fund

Hawai‘i Children’s Trust Fund

Hawai‘i Island Fund

Hawai‘i Police Memorial Fund

Hawai‘i Tobacco Prevention & Control Trust Fund

George J. Henritzky Memorial Fund

Harry Hewitt Fund for Advancement & Improvement of Justice

Hewlett Fund

May Templeton Hopper Fund

Ka Papa O Kakuhihewa Fund

Kahuku Community Fund

Kaua‘i Island Fund

Jessie D. Kay Memorial Fund

Ke Au Hou, Hawai‘i’s Youth Millennium Fund

Leslie S. King Fund

June Ann Kirkpatrick Fund

Annie Sinclair Knudsen Fund

Albert T. Koenen Fund

Alan M. Krassner Fund

Lāna‘i Community Benefit Fund

Chonita & Jack Larsen Fund

Abraham & Annie Lau Children’s Fund

Jeanette A. Le Vine Fund

Lē‘ahi Fund to Treat and Prevent Pulmonary Disease

Virginia & Colin Lennox Botanical Research Trust Fund

Maui Quarantine Fund

Ingeborg v. F. McKee Fund

Arthur Lawrence Mullaly Fund

Natural Resources Conservation Endowment Fund

Neighborhood Grants Program Fund

Robert C. & Helen F. Nichols Fund

*Gary T. & Hilde M. Nii Fund*

Rev. Takie Okumura Family Fund

June Olson Fund

Josie & Don Over Comedy Fund

Parks Family Foundation Fund

Robert C. Perry Fund

Pikake Fund

Public-Private Partners for Literacy Trust Fund

Quality of Life Fund

James & Winifred D. Robertson Memorial Fund

Irving L. Singer Fund

Richard Smart Fund

Alice M.G. Soper Fund

Shirley Ann Stringer-Heller Medical Research Fund

Esther McClure Stubblefield Fund

Adrienne Wong Toyozaki Fund

Traut Carson Fund

Laila Twigg-Smith Art Fund

Valley Isle Vision Fund

Theodore A. Vierra Fund

Bernice & Conrad von Hamm Fund

Mary & Paul Wagner Blindness Prevention Fund

Kitaro Watanabe Fund

Harry & Jeanette Weinberg Fund for Family Literacy

West Hawai‘i Fund

Lillian K. Wilder Fund

Women’s Fund Endowment

Tai Up Yang Fund

*Youth Matters Fund*

Henry A. Zuberano Early Education Fund

## Special Projects Fund

This fund was established to receive contributions for time-limited special purposes. The ongoing or new projects include:

Alert Alarm of Hawai‘i Social Capital Fund

*The Big Read*

Case Foundation Fund/PONO Fellows Program

Economic Security Fund

Friends of Hawai‘i Charities, Inc. Fund

Gerbode/HCF Fellows Program

Hawai‘i Island Earthquake Relief Fund

Ho‘okupu Trust, A Legacy for Tomorrow’s Child

International Giving Program

Kellogg Wai‘anae Fund

Koaniani Fund

Mo’ Bettah Together Fund



*Moonbow Fund*

Albert D. Moscotti Fund  
 Louis Pohl Trust Fund  
 Rapozo Kama'aina Fund  
*John & Mary Karyl Thorne Fund*  
 Walk the Talk Fund  
 Jean Warburton Memorial Fund

**Scholarships**

Private foundations, individuals, businesses  
 and organizations create these funds to  
 assist Hawai'i residents in achieving their  
 educational endeavors.

100th Infantry Battalion Veterans Memorial  
 Scholarship Fund  
 2200 Educational Scholarship Fund  
 ABC Stores Jumpstart Scholarship  
 Elena Albano "Maka'alahilohi"  
 Scholarship Fund  
 American Institute of Graphic Arts (AIGA)  
 Honolulu Chapter Scholarship Fund  
 in Memory of Jane Suganuma  
 American Savings Bank Scholars Program  
 Anthony Alexander, Andrew Delos Reyes  
 & Jeremy Tolentino Memorial Fund  
 Kellie Ann Andrade Scholarship Fund  
 Laura Jean Armstrong Fund  
 Earl E. Bakken Engineering Fund  
 Troy Barboza Education Fund  
 Billie Beamer Educational Fund  
 Bick Bickson Scholarship Fund  
 E.E. Black Scholarship Fund  
 Mary Bloder Scholarship Fund  
*Booz Allen Hawai'i Scholarship Fund*  
 Ron Bright Scholarship Fund  
*Herbert & Ollie Brook Scholarship Fund*  
*Laura Rowe Burdick Scholarship Fund*  
 Raymond F. Cain Scholarship Fund  
 Candon Consulting Group  
 Scholarship Fund  
 Castle & Cooke Mililani Technology Park  
 Scholarship Fund

Castle & Cooke George W.Y. Yim  
 Scholarship Fund  
 Henry & Dorothy Castle Memorial  
 Scholarship Fund  
 Joseph & Alice Duarte Memorial Fund  
 Cayetano Foundation Scholarship Fund  
 Camille C. Chidiac Fund  
 Dolly Ching Scholarship Fund  
 Community Scholarship Fund  
 George & Lucille Cushnie Scholarship  
 Fund  
 Bal Dasa Scholarship Fund  
 John Dawe Fund  
 Department of Hawaiian Home Lands  
 Scholarship Fund  
 Edward J. Doty Scholarship Fund  
 Laura N. Dowsett Fund  
 Eastside & Northshore Kaua'i Scholarship  
 Fund  
 Rosemary & Nellie Ebrie Fund  
 Jean Erdman Scholarship Fund  
 Blossom Kalama Evans Memorial  
 Scholarship Fund  
 Ambassador Minerva Jean Falcon Hawai'i  
 Scholarship Fund  
 Thz Fo Farm Fund  
 Wallace Rider Farrington Memorial  
 Scholarship Fund  
 Filipino Nurses' Organization of Hawai'i  
 Scholarship Fund  
 Financial Women International Fund  
 Oscar & Rosetta Fish Scholarship Fund  
 Jean Fitzgerald Scholarship Fund  
 Friends of Hawai'i Public Housing Fund  
*G & J Furuta Scholarship Fund*  
 Allan Eldin & Agnes Sutorik Geiger  
 Scholarship Fund  
 Doris & Clarence Glick Classical Music  
 Scholarship Fund  
 Steven M. Ginoza Memorial Scholarship  
 Fund  
*Good Eats Scholarship Fund*  
 Grace Pacific Outstanding Scholars Fund  
 Ritchie Gregory Fund

Thelma Grace Hansen Fund  
 Margaret Follett Haskins (Maui)  
 Scholarship Fund  
 Margaret Follett Haskins (Hawai'i)  
 Scholarship Fund  
*Foodland Scholarship Fund*  
 K.M. Hatano Scholarship Fund  
 Hawai'i High School Marketing & Business  
 Plan Competition Scholarship Fund  
*Hawai'i Pizza Hut Scholarship Fund*  
 Hawai'i Society of Certified Public  
 Accountants Scholarship Fund  
*Celeste Hayo Memorial Scholarship Fund*  
 Will J. Henderson Scholarship Fund  
 Hilo Chinese School Scholarship Fund  
 Ichiro & Masako Hirata Scholarship Fund  
 Chinn Ho Scholarship Fund  
 Fletcher & Fritz Hoffmann Educational  
 Fund  
 Hoku Scholarship Fund  
 Paul & Betty Honzik Scholarship Fund  
 Ho'omaka Hou—A New Beginning Fund  
 Elsie S. Yoshizawa Hotta Scholarship Fund  
 David L. Irons Memorial Scholarship Fund  
 Isemoto Contracting Co., Ltd. Scholarship  
 Fund  
 Margaret Jones Memorial Nursing Fund  
 Ka'a'awa Community Fund  
 Kahala Nui Residents Scholarship Fund  
*Kahiau Scholarship Fund*  
 Kalihi Education Coalition Scholarship  
 Fund  
 Esther Kanagawa Memorial Art Scholarship  
 Fund  
 Kapolei Business & Community  
 Scholarship Fund  
 Kawakami Family Fund  
 Kawasaki-McGaha Scholarship Fund  
 King Kekaulike High School Scholarship  
 Fund  
 F. Koehnen Ltd. Scholarship Fund  
 Kohala Ditch Education Fund  
 Kōloa Scholarship Fund  
 Walter H. Kupau Memorial Fund



William James Lanquist & Dorothy Bading  
Lanquist Fund

Tommy Lee Memorial Scholarship Fund

Gerrit R. Ludwig Scholarship Fund

Dan & Pauline Lutkenhouse & Hawai'i  
Tropical Botanical Garden Scholarship  
& Education Fund

Kenneth Makinney & David T. Pietsch  
Families Scholarship Fund

Makia & Ann Malo Scholarship Fund

Cora Aguda Manayan Fund

George Mason Business Scholarship Fund

Senator Richard M. & Dr. Ruth H.  
Matsuura Scholarship Fund

Hideko & Zenzo Matsuyama Scholarship  
Fund

Shirley McKown Scholarship Fund

Frank H. Minato Scholarship Fund

Carl K. Mirikitani Memorial Fund

*Yasuko Mitsuyasu Scholarship Fund*

Dr. Edison & Sallie Miyawaki Scholarship  
Fund

Moanalua High School Math Scholarship  
Fund

Craig D. Newnan Memorial Fund

O'ahu Filipino Community Council Golf  
Scholarship Fund

Office of Hawaiian Affairs Scholarship  
Fund

Ellison Onizuka Memorial Scholarship  
Fund

PHG Foundation Fund

PRSA-Roy Leffingwell Public Relations  
Scholarship Fund

Peter R. Papworth Scholarship Fund

Pasuquinio Association of Hawai'i  
Scholarship Fund

Eugenia Jacqueline Perry Fund

Gail A. Perry Fund

Philippine Cultural Foundation in Hawai'i  
Scholarship Fund

Philippine Nurses Association of Hawai'i  
Foundation Scholarship Fund

Realtors Association of Maui Presidential  
Scholarship Fund

Lilian B. Reynolds Fund

Robanna Fund

Sarah Rosenberg Scholarship Fund

John Ross Foundation Scholarship Fund

Saake Foundation Fund

*D & J Sakaguchi  
Scholarship Fund*

Kurt W. Schneider Memorial Scholarship  
Fund

H. C. Shipman Scholarship Fund

Ian Doane Smith Memorial Scholarship  
Fund

Paulina L. Sorg Scholarship Fund

Shuichi, Katsu & Itsuyo Suga Scholarship  
Fund

Perry & Sally Sorenson Scholarship Fund

Times Supermarket Shop & Score  
Scholarship Fund

Tongan Cultural Association Scholarship  
Fund

University of Redlands Hawai'i Alumni  
Scholarship Fund

Nick Van Pernis Scholarship Fund

Frances S. Watanabe Memorial Scholarship  
Fund

West Kaua'i Scholarship Fund

Alma White - Delta Chapter, Delta Kappa  
Gamma Scholarship Fund

Vicki Willder Scholarship Fund

*Shelley M. Williams, RPh Scholarship Fund*

Eiro Yamada Memorial Scholarship

Ray Yoshida Fine Arts Scholarship Fund

Toraji & Toki Yoshinaga Scholarship Fund

Henry A. Zuberano Scholarship Fund

### Vocational Education Scholarships

These scholarship funds were created to help students interested in pursuing technical trades or vocational fields.

*ABC Jumpstart Scholarship Fund*

John & Anne Clifton Scholarship Fund

Johanna Drew Cluney Scholarship Fund

Logan Nainoa Fujimoto Memorial  
Scholarship Fund

Ellen Hamada Scholarship Fund for Fashion Design and Sewing

Hawaiian Homes Commission Career and Technical Education Scholarships

Hew/Shinn Scholarship Fund

Ouida Mundy Hill Memorial Scholarship  
Fund

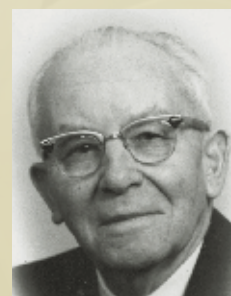
Arthur Jackman Scholarship Fund

Kahala Nui Residents Scholarship Fund

H.C. Shipman Scholarship Fund

Snipes-Meyer-Vorhies Nursing Scholarship  
Fund

*March Taylor Educational Fund*



Arthur Jackman



# Volunteer Advisory Committees & Boards

2007

Some funds have advisory committees made up of thoughtful community leaders who provide their expertise to support the Board of Governors with grantmaking.

\*deceased

## **Elena Albano “Maka’alohilohi” Scholarship Fund**

Liana Mancini Horovitz  
Lee Stein

## **Earl E. Bakken Engineering Fund**

Sharon Chern  
Betsy Cole  
Lawrence Lowe  
Richard Matsuda  
Alan Nakagawa  
Thomas Pack

## **Mary Josephine Bloder Scholarship Fund**

Eric Balinbin  
Edwin Bartholomew  
Michael Nakano  
Gail Takeuchi

## **Cayetano Foundation Scholarship Fund**

Vicky Cayetano  
H. Mitchell D’Olier  
Edison Miyawaki

## **Chevron Education Fund**

Derek Minakami  
Gail Peiterson  
Carina Tagupa, *Ex-Officio*

## **Kay A. Edwards Memorial Library Charitable Trust Fund**

Katherine Acks  
Michael de la Cruz  
Janet Fehr

## **‘Ewa Beach Community Fund**

Arlene Eaton  
Lisa Inanoria  
Rowena Martinez  
Paul T. Oshiro  
Rodolfo Ramos  
Frances Rivero  
Tim Tucker

## **Family Literacy Fund**

Ward Almeida  
Sharon Amano  
Diane Iwaoka  
Solomon Kaulukukui  
Kalen Kitagawa  
Gerry Madrazo  
Shelley Ng  
Richard Palma  
Delwyn H. Wong  
Leah Allen, *Ex-Officio*

## **Wallace Rider Farrington Memorial Scholarship Fund**

Charles H. Hite  
Chad Kaanoi  
Arlene Lum  
Trinidad M. Peltier  
Mary Poole  
Eugene Shen  
Rosemary Sumajit  
Michael Unebasami

## **Jean Fitzgerald Scholarship Fund**

Masu Kusume Dyer  
Mimmi Kennel  
Marilyn Kiner  
Judy Moody  
Barry Nakasone

## **Group 70 Foundation Fund**

Theresa A’ea  
Kimberly C. Evans  
Cami L. Kloster

## **Margaret Follett Haskins Scholarship Fund**

Katherine Acks  
Maggie Bruck  
Bud Clark  
Daren Muraoka  
Renee Riley  
Ron St. John

## **Hawai’i Children’s Trust Fund**

Sen. Suzanne Chun-Oakland  
Loretta Fuddy  
Rep. Maile Shimabukuro  
Kelly Rosati  
Martha Torney  
Virginia Weinman  
Alan T. Yamamoto  
Patrick K. Yim

## **Ho’omaka Hou—A New Beginning Fund**

Betty M. Vitousek  
Pip White  
Karen K. White

## **Kahuku Community Fund**

Buddy Ako  
Jim Camit  
Ralph Makaiau  
Warren Soh

## **Ka Papa O Kakuihewa Fund**

William Aila  
Melva Aila  
Fred Dodge  
Eric Enos  
Josiah Hoohuli  
Georgette Jordan  
Momi Kamahele  
Shad Kane  
Cynthia Rezendes  
Karen Young

## **Kaua’i Aloha Endowment Fund**

Rev. Bodhinatha Veylanswami  
Susan A. Kanoho  
Maryanne W. Kusaka  
Michael J. Murakoshi  
Stephanie Kaluahine Reid

## **King Kekaulike High School Scholarship**

Janie King  
Cheryl Nakasone  
Susan Tavares-Kenney  
Karla Yankovich



**Annie Sinclair Knudsen Memorial Fund**

Tad Miura, Jr.  
Myles S. Shibata  
Sonia Topenio

**Ellen M. Koenig Memorial Fund**

George S. Brosky  
Alfred H. Hee  
Walter S. Kirimitsu

**Kūki'o Community Fund**

Samuel Ainslie  
Carl A. Carlson  
BJ Kobayashi  
Jim Lally  
Robert Punihaole  
Elle Stephens

**Lana'i Community Benefit Fund**

Cyndi Arruiza\*  
Wayne Ishizaki  
Larry Kawasaki  
Pierce Myers  
John Ornellas  
Michael Schochet  
Neal Tamashiro  
Jackie Woolsey

**Chonita & Jack Larsen Fund**

Jack Larsen  
Alice Richardson  
Barbara Rutter  
Robert M. Witt

**Lē'ahi Fund to Treat & Prevent Pulmonary Disease**

David Easa, M.D.  
James H. Gollop, M.D.  
Reid Ikeda, M.D.  
James Lumeng, M.D.  
Kenneth Nakamura  
Laurence Rotkin, M.D.  
Frank Tabrah, M.D.  
Shanon Takaoka  
Jean Evans, *Ex-Officio*

**Jeanette A. Le Vine Fund**

Steven Guttman  
Mim Lang  
Linda S. Martell  
Rabbi Peter Schaktman  
Alice Tucker

**Gerrit R. Ludwig Scholarship Fund**

Brian M. Iwata

**Kenneth Makinney & David T. Pietsch Families Scholarship Fund**

Joseph Goldcamp, III  
Edwina Romig  
Jack Sullivan

**Cecil G. Marshall Fund**

Charles R. Kelley  
Elizabeth Kelley  
Estelle M. Kelley

**Maui Quarantine Fund**

Richard Cameron  
Charlie Jencks  
Myles Kawakami  
Pamela Tumpap

**Medical Research Advisory Committee**

Michele Carbone  
Sandra S. Chang, M.D.  
David Curb, M.D.  
Velma Kameoka, Ph.D.  
Olivier Le Saux, M.D.  
Paul Patek, M.D.  
Helen Petrovitch, M.D.  
Todd Blake Seto, M.D.  
Ralph V. Shohet, M.D.  
Andre Theriault, M.D.

**Rev. Takie Okumura Family Fund**

Margaret L. Kaulukukui  
Dennis Kodama  
Diane Kodama  
Noella Kong  
Grant Lee  
Sada Okumura, M.D.

**Ian Doane Smith Memorial Scholarship Fund**

Bonnie Ancog  
Dave Jorgensen  
Kent R. Smith

**Laila Twigg-Smith Art Fund**

Duncan Dempster  
Jay Jensen  
Galen C. Leong  
Cade Roster  
Waileia Roster  
Fred Roster

**Theodore A. Vierra Fund**

Charles E. Nelson  
Earlynne F. Oshiro  
Theodore Vierra

**Bernice & Conrad von Hamm Fund**

Meleen L. Corenevsky  
C. Michael Heihre  
James C. Pell

**Kitaro Watanabe Fund**

David McNeil  
Masahiro Yamaguchi

**West Hawai'i Fund**

Laurie T. Ainslie  
Rick Asbach  
Gregory C. Chun  
Scott Dodd  
Sharon Handgis  
David B. Kaapu  
Dale L. Ishida Suezaki, *Chair*  
Cindy Whittemore  
Ross Wilson Jr.



# Statements of Assets, Liabilities and Net Assets

(Modified Cash Basis) December 31, 2007 and 2006

\*Unaudited—These assets are not included in HCF's modified cash basis audited financial statements. For further information, the audited financial statements with accompanying notes and unqualified opinion from independent auditor can be viewed at [www.hawaiicommunityfoundation.org](http://www.hawaiicommunityfoundation.org)

## ASSETS

2007

2006

### Investments, at fair value

Combined investment funds	\$277,618,956	\$255,316,300
Cash management funds	44,219,42	37,433,776
Common stocks	40,018,554	36,952,231
U.S. Treasury bonds	13,943,159	12,623,883
Corporate bonds	4,207,732	3,780,312
Mutual funds	4,969,150	3,332,396
Real property held for sale	333,752	1,175,626
Total investments	<u>\$385,310,845</u>	<u>\$350,614,524</u>

Cash and cash equivalents	649,275	1,578,118
Property, net	496,153	505,111
Security deposit and other	177,208	190,183
Total assets	<u>\$386,633,481</u>	<u>\$352,887,936</u>

## LIABILITIES AND NET ASSETS

### Liabilities

Contract funds held for Tobacco Fund and other organizations	56,524,403	50,144,546
Gift annuity liabilities	2,452,756	2,396,680
Funds held as agency endowments	1,636,878	1,575,237
Other	11,138	10,704
Total liabilities	<u>60,625,175</u>	<u>54,127,167</u>

### Net assets

Unrestricted	315,531,607	295,420,286
Temporarily restricted	9,474,899	3,340,483
Permanently restricted	1,001,800	—
Total net assets	<u>326,008,306</u>	<u>298,760,769</u>
Total liabilities and net assets	<u>\$386,633,481</u>	<u>\$352,887,936</u>

Other Trust Assets*	\$113,593,000	\$113,141,800
Total Combined Assets*	<u>\$500,226,481</u>	<u>\$466,029,736</u>



# Statements of Revenues and Expenses and Changes in Net Assets

(Modified Cash Basis) Year Ended December 31, 2007 and 2006

REVENUES	2007	2006
Contributions available for grantmaking and programs	\$2,970,053	\$4,689,984
Contracts and grants	4,720,015	4,644,630
Contracts and grants—Tobacco Fund	4,950,217	6,565,641
Investment return expendable for grantmaking and operations	15,318,855	12,360,357
Income from perpetual trusts	3,094,804	4,754,019
Service and administrative fees, net	1,440,378	1,499,488
Other	192,672	292,195
Total revenues	<u>32,686,994</u>	<u>34,806,314</u>
EXPENSES		
Grants and scholarships	18,441,191	17,099,783
Grants—Tobacco Fund	4,841,013	4,439,993
Program services	2,938,130	4,827,375
Finance and administration	2,020,871	1,825,009
Charitable services and donor relations	1,028,580	1,133,565
Total expenses	<u>29,269,785</u>	<u>29,325,725</u>
Increase in net assets from operating activities	3,417,209	5,480,589
NONOPERATING ACTIVITIES		
Contributions designated for investment of principal	17,377,333	46,196,039
Investment return designated for reinvestment	6,656,008	14,518,940
Change in value of split-interest agreements	(203,013)	(427,902)
Total nonoperating activities	<u>23,830,328</u>	<u>60,287,077</u>
Total change in net assets	27,247,537	65,767,666
NET ASSETS		
Beginning of the year	298,760,769	232,993,103
End of the year	<u>\$326,008,306</u>	<u>\$298,760,769</u>



# Hawai'i Community Foundation Staff

Robert Abad Sr.  
*Sr. Accountant – Component Funds*

Rhea Abenojar  
*Sr. Program Assistant*

Thomas Atou  
*Program Officer*

Sarah Baker  
*Philanthropic Services Assistant*

Kathleen Buenger  
*Philanthropic Services Officer, Maui County*

Jennifer Bulosan  
*Communications Coordinator*

Jessica Calilao  
*Assistant Controller*

Evie Carranza  
*Executive Assistant, General Counsel  
& Operations*

Diane U. Chadwick  
*Philanthropic Services Officer, Hawai'i Island*

Ji Sun Chang  
*Webmaster & Technology Advancement Officer*

Wally Chin  
*Controller*

Lydia Clements  
*Philanthropic Services Officer, Hawai'i Island*

Christina Cook  
*Philanthropic Services Assistant*

Janet Cutting  
*Funds Administrative Officer*

L. Chips DaMate  
*Executive Assistant, Programs*

Georgianna DeCosta  
*Philanthropic Services Assistant*

Tess Dela Rama  
*Front Office Administrator*

Jaedine Ehia  
*Scholarship Associate*

Roella Foronda  
*Program Officer*

Ginger Gannon  
*Philanthropic Services Officer, Maui County*

Kaleilani Grant  
*Scholarship Assistant*

Jeanne Hamilton  
*Philanthropic Services Program Officer*

Ken Hasegawa  
*Sr. Scholarship Associate*

Marlene Hochuli  
*Philanthropic Services Assistant,  
Hawai'i Island*

Cori Joseph  
*Philanthropic Services Program Officer*

Arleen Kamei  
*Human Resource Manager*

Cheryl Kaneshiro  
*Knowledge Management Specialist*

Dawn Kaniaupio  
*Funds Administrative Assistant*

Rona Kekauoha  
*Scholarship Officer*

Kalowena Komeiji  
*Director of Communications*

Lillian Langeslay  
*Executive Assistant, Philanthropic Services*

Kate Lloyd  
*General Counsel & Vice President, Operations*

Amy Luersen  
*Director of Philanthropic Services*

Susan Maltezo  
*Grants Manager*

Pi'ikea Miller  
*Sr. Program Officer*

Lynelle Miyashiro  
*Philanthropic Services Officer*

Jennifer Naguwa  
*Sr. Program Assistant*

Clarysse Kami Nunokawa  
*Sr. Program Officer*

Uri Pasaoa  
*Philanthropic Services Assistant, Kaua'i Island*

Luis Pascual, Jr.  
*Systems Administrator*

John Prest  
*Computer Systems Specialist*

Lisa Rodrigues  
*Program Associate*

Terry Savage  
*Philanthropic Services Program Officer*

Jennifer Schember-Lang  
*Sr. Program Officer*

Myles Shibata  
*Vice President, Philanthropic Services*

Carrie Shoda-Sutherland  
*Program Officer*

Linda Takehara  
*Accounting Assistant*

Kelvin H. Taketa  
*President & CEO*

Lorraine Sato Tamaribuchi  
*Director of Family Philanthropy*

Licia Trotter  
*Executive Assistant to the President & CEO*

Chris van Bergeijk  
*Vice President, Programs*

Christel Wuerfel  
*Philanthropic Services Assistant*

Lia Young  
*Sr. Accountant—Operating Funds*

Darcie Yukimura  
*Philanthropic Services Officer—Kaua'i Island*



# Stewards

## OF THE COMMUNITY

Hawai‘i Community Foundation’s capacity to serve the community is tied directly to its ability to preserve and enhance the financial assets that it stewards. The Board of Governors has developed investment policies and guidelines that provide for long-term growth and prudent asset management in order to ensure that the needs of the community can continue to be met. The safekeeping and actual investment management of assets held in trust is done by one of the Foundation’s corporate trustee partners: Bank of Hawai‘i, First Hawaiian Bank and Central Pacific Bank. The Foundation also has established relationships with other investment entities to manage its corporate assets. A committee composed of Board Members and assisted by staff, and an independent investment monitor oversees all investment activities of the Foundation.





HAWAII COMMUNITY  
FOUNDATION

1164 Bishop Street, Ste. 800  
Honolulu, Hawai'i 96813  
Phone: 808.537.6333  
Toll-free: 1.888.731.3863  
Fax: 808.521.6286

Neighbor Island Offices:

Hawai'i Island:  
65-1279 Kawaihae Road  
Parker Square, Room 203  
Kamuela, Hawai'i 96743  
Phone: 808.885.2174  
Fax: 808.885.1857

Kaua'i:  
4370 Kukui Grove Street, Ste. 207  
Līhu'e, Hawaii 96766  
Phone: 808.245.4585  
Fax: 808.245.5189

Maui:  
2241 B Vineyard Street  
Wailuku, Hawai'i 96793  
Phone: 808.242.6184  
Fax: 808.242.1505

Web site:  
[www.hawaiicommunityfoundation.org](http://www.hawaiicommunityfoundation.org)